

Project manager

Project dates

Oct 18, 2019 - Dec 4, 2019

Completion

2%

Tasks

61

Resources

0

## Tasks

Name	Begin date	End date	Completed
CHL1 Tests (Oportunistic RF On)	10/18/19	10/20/19	
Tunnel Open	10/21/19	10/22/19	
HCO	10/20/19	10/20/19	
DC Power Box supply Hipot	10/20/19	10/20/19	Done
<i>October 17 - 20: DC Power got high potting completed and most shunt checks are finished. Punch list developed. Arc 10 string needs investigation</i>			
Injector Setup	10/18/19	11/3/19	
Gun Electrode 130 keV tests	10/18/19	10/20/19	Done
Injector PSS certs w/ beam	10/21/19	10/21/19	Done
FC1	10/21/19	10/24/19	
Cathode Alignment	10/21/19	10/22/19	
<i><a href="http://opsweb.acc.jlab.org/CSUEApps/atlis/task/18799">http://opsweb.acc.jlab.org/CSUEApps/atlis/task/18799</a></i>			
4 Laser LLRF Phase Recovery	10/22/19	10/22/19	
<i><a href="http://opsweb.acc.jlab.org/CSUEApps/atlis/task/19407">http://opsweb.acc.jlab.org/CSUEApps/atlis/task/19407</a></i>			
Beam Setup (Inj Group)	10/22/19	10/23/19	
130 keV Match	10/23/19	10/23/19	
<i>Yves to write ATLI</i>			
Parity Settings for all 4 Lasers	10/24/19	10/24/19	
<i><a href="http://opsweb.acc.jlab.org/CSUEApps/atlis/task/19670">http://opsweb.acc.jlab.org/CSUEApps/atlis/task/19670</a></i>			
OL04 FE Test	10/24/19	10/24/19	
<i><a href="http://devweb.acc.jlab.org/CSUEApps/atlis/task/18979">http://devweb.acc.jlab.org/CSUEApps/atlis/task/18979</a></i>			
FC2	10/25/19	10/26/19	
Beam Setup (FCup 2)	10/25/19	10/25/19	
FCup#2 Centering (Current Discrepancy Investigation)	10/26/19	10/26/19	
<i><a href="http://devweb.acc.jlab.org/CSUEApps/atlis/task/19617">http://devweb.acc.jlab.org/CSUEApps/atlis/task/19617</a></i>			
6 MeV Region Match	10/26/19	10/26/19	
<i>Yves to write ATLI</i>			

## Tasks

Name	Begin date	End date	Completed
PQB Setup Verification <i><a href="http://opsweb.acc.jlab.org/CSUEApps/atlis/task/18793">http://opsweb.acc.jlab.org/CSUEApps/atlis/task/18793</a></i>	10/26/19	10/26/19	
ILD	10/27/19	11/3/19	
Beam Setup (INJ Group) <i>Yves to write ATLI</i>	10/27/19	10/28/19	
Inj Matching (Chicane) <i>Yves to write ATLI</i>	10/29/19	10/29/19	
PQB Setup Verification <i><a href="http://opsweb.acc.jlab.org/CSUEApps/atlis/task/18793">http://opsweb.acc.jlab.org/CSUEApps/atlis/task/18793</a></i>	10/29/19	10/29/19	
Other ILD Studies	10/30/19	11/3/19	
SL RF On <i>October 18-20: Much of the C30s and C50s brought up. No C100s. <a href="https://logbooks.jlab.org/entry/3735406">https://logbooks.jlab.org/entry/3735406</a></i>	10/18/19	11/24/19	
NL RF On	10/19/19	11/24/19	
SRF Commisioning (NL Only) <i>October 18-20: 1L25 and 1L20 comissioning began. 1L20 entries: <a href="https://logbooks.jlab.org/entry/3735215">https://logbooks.jlab.org/entry/3735215</a> <a href="https://logbooks.jlab.org/entry/3735228">https://logbooks.jlab.org/entry/3735228</a> <a href="https://logbooks.jlab.org/entry/3735235">https://logbooks.jlab.org/entry/3735235</a> <a href="https://logbooks.jlab.org/entry/3735278">https://logbooks.jlab.org/entry/3735278</a> <a href="https://logbooks.jlab.org/entry/3735282">https://logbooks.jlab.org/entry/3735282</a> <a href="https://logbooks.jlab.org/entry/3735284">https://logbooks.jlab.org/entry/3735284</a> <a href="https://logbooks.jlab.org/entry/3735277">https://logbooks.jlab.org/entry/3735277</a> 1L25 entries: <a href="https://logbooks.jlab.org/entry/3735349">https://logbooks.jlab.org/entry/3735349</a> <a href="https://logbooks.jlab.org/entry/3735417">https://logbooks.jlab.org/entry/3735417</a></i>	10/18/19	11/3/19	
C100 FE Measurement w/ GM Tubes <i>Powers Atlis Inc</i>	11/4/19	11/4/19	
Set Energy (RF Push)	11/4/19	11/5/19	
Box Supply Cycling RHEL-7 (Cade) <i><a href="http://opsweb.acc.jlab.org/CSUEApps/atlis/atlis.php?load=Task&amp;task_id=19184">http://opsweb.acc.jlab.org/CSUEApps/atlis/atlis.php?load=Task&amp;task_id=19184</a></i> <i>Can be done during RF Push, after DC Power HCO, and before 5 pass spin up</i>	11/4/19	11/4/19	
5 pass Spin up	11/6/19	11/12/19	

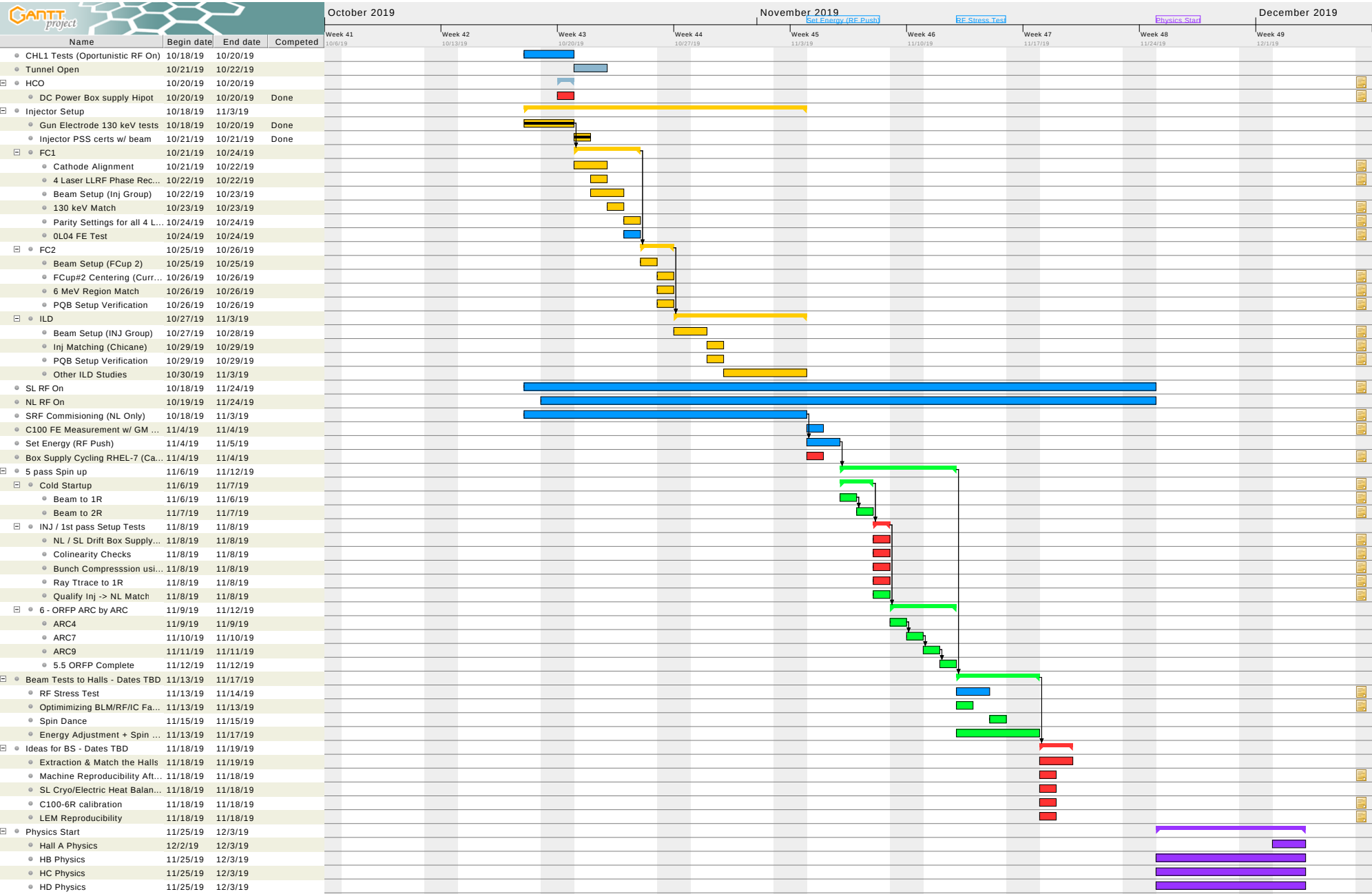
## Tasks

Name	Begin date	End date	Completed
Cold Startup	11/6/19	11/7/19	
<i>Atlas Freeman &amp; Aiken</i>			
Beam to 1R	11/6/19	11/6/19	
<i>Thread Beam</i>			
<i>Hand Phase</i>			
<i>Tune Energy</i>			
<i>Phaser</i>			
Beam to 2R	11/7/19	11/7/19	
<i>Thread through SL</i>			
<i>Hand Phase SL</i>			
<i>2E Match</i>			
<i>SL Phaser</i>			
INJ / 1st pass Setup Tests	11/8/19	11/8/19	
NL / SL Drift Box Supply Calibration	11/8/19	11/8/19	
<i>Tiefenback to develop new ATIs that includes Hall A Arc energy measurment. Yves to to identify contact (Still Doug Higinbotham?)</i>			
Colinearity Checks	11/8/19	11/8/19	
<i>Position and timing colinearity for all 4 lasers.</i>			
<i>Check degree of colinearity through to 1R. Check 4 lasers vs. NL Gang phase. ATIs task needed?</i>			
Bunch Compresssion using OL04	11/8/19	11/8/19	
<i>Use Arc Bunch length measurment process to give max compression using OL04 (minimum spot size in Arc 1 High dispersive region) at Max energy. Freeman to develop and ATIs task for this.</i>			
Ray Ttrace to 1R	11/8/19	11/8/19	
<i>Tief / Yves</i>			
Qualify Inj -> NL Match	11/8/19	11/8/19	
<i>Step 1-4 in ORFP. Uses 1L02, 1L06, 1L10 viewers to qualify match from the Injector. Is there a better way?</i>			
<i>Try INJ FOpt correctors to FOpt to 1R?</i>			
6 - ORFP ARC by ARC	11/9/19	11/12/19	
ARC4	11/9/19	11/9/19	
ARC7	11/10/19	11/10/19	
ARC9	11/11/19	11/11/19	
5.5 ORFP Complete	11/12/19	11/12/19	
Beam Tests to Halls - Dates TBD	11/13/19	11/17/19	


## Tasks

Name	Begin date	End date	Completed
RF Stress Test <i>Spin up 5 pass beam to Hall A. Optimize RF and Beam transport with 600 kW in the Machine.</i>	11/13/19	11/14/19	
Optimizing BLM/RF/IC Faults <i>Perhaps needed to be done during RF stress testing.</i>  <i>May also require re-calibration of BLM? BLMs too sensitive?</i> <i>BLM setup procedure attached to:</i> <i><a href="http://opsweb.acc.jlab.org/CSUEApps/atlis/task/16634">http://opsweb.acc.jlab.org/CSUEApps/atlis/task/16634</a></i>	11/13/19	11/13/19	
Spin Dance	11/15/19	11/15/19	
Energy Adjustment + Spin Dance	11/13/19	11/17/19	
Ideas for BS - Dates TBD	11/18/19	11/19/19	
Extraction & Match the Halls	11/18/19	11/19/19	
Machine Reproducibility After Wein Flips <i>Rematching Early INJ Testing</i>	11/18/19	11/18/19	
SL Cryo/Electric Heat Balancing - Tief	11/18/19	11/18/19	
C100-6R calibration <i>Jay Atlis</i>	11/18/19	11/18/19	
LEM Reproducibility <i>Yves to Write ATLIs</i> <i>Checking Early NL Bypass</i>	11/18/19	11/18/19	
Physics Start	11/25/19	12/3/19	
Hall A Physics	12/2/19	12/3/19	
HB Physics	11/25/19	12/3/19	
HC Physics	11/25/19	12/3/19	
HD Physics	11/25/19	12/3/19	

Gantt Chart



Resources Chart

		October 2019				November 2019				December 2019		
Name	Default role	Week 41 10/6/19	Week 42 10/13/19	Week 43 10/20/19	Week 44 10/27/19	Week 45 11/3/19	Week 46 11/10/19	Week 47 11/17/19	Week 48 11/24/19	Week 49 12/1/19		