

Project manager

Project dates

Oct 18, 2019 - Dec 21, 2019

Completion

2%

Tasks

64

Resources

0

Tasks

Name	Begin date	End date	Completed
CHL1 Tests (Oportunistic RF On)	10/18/19	10/20/19	
Tunnel Open	10/21/19	10/23/19	
HCO	10/18/19	11/3/19	
DC Power Box supply Hipot	10/20/19	10/20/19	Done
<i>October 17 - 20: DC Power got high potting completed and most shunt checks are finished. Punch list developed. Arc 10 string needs investigation Arc 10 Work: https://logbooks.jlab.org/entry/3735720</i>			
Force Open C100 VBVs	10/22/19	10/22/19	
<i>http://devweb.acc.jlab.org/CSUEApps/atlis/task/19792</i>			
HCO	10/18/19	11/3/19	
Injector Setup	10/18/19	11/3/19	
Gun Electrode 130 keV tests	10/18/19	10/20/19	Done
Injector PSS certs w/ beam	10/21/19	10/21/19	Done
FC1	10/21/19	10/24/19	
Cathode Alignment	10/22/19	10/22/19	Done
<i>http://opswweb.acc.jlab.org/CSUEApps/atlis/task/18799</i>			
4 Laser LLRF Phase Recovery	10/21/19	10/21/19	Done
<i>http://opswweb.acc.jlab.org/CSUEApps/atlis/task/19407 Results in: https://logbooks.jlab.org/entry/3735638</i>			
Beam Setup (Inj Group)	10/21/19	10/22/19	
<i>https://logbooks.jlab.org/entry/3735744</i>			
130 keV Match	10/23/19	10/23/19	
<i>http://opswweb.acc.jlab.org/CSUEApps/atlis/task/19805</i>			
Parity Settings for all 4 Lasers	10/24/19	10/24/19	
<i>http://opswweb.acc.jlab.org/CSUEApps/atlis/task/19670</i>			
OL04 FE Test	10/24/19	10/24/19	
<i>http://devweb.acc.jlab.org/CSUEApps/atlis/task/18979</i>			
FC2	10/25/19	10/26/19	
Beam Setup (FCup 2)	10/25/19	10/25/19	

Tasks

Name	Begin date	End date	Completed
FCup#2 Centering (Current Discrepancy Investigation) <i>http://devweb.acc.jlab.org/CSUEApps/atlis/task/19617</i>	10/26/19	10/26/19	
6 MeV Region Match <i>http://opsweb.acc.jlab.org/CSUEApps/atlis/task/19786</i>	10/26/19	10/26/19	
PQB Setup Verification <i>http://opsweb.acc.jlab.org/CSUEApps/atlis/task/18793</i>	10/26/19	10/26/19	
ILD	10/27/19	11/3/19	
Beam Setup (INJ Group) <i>Yves to write ATLI</i>	10/27/19	10/28/19	
Inj Matching (Chicane) <i>Yves to write ATLI</i>	10/29/19	10/29/19	
PQB Setup Verification <i>http://opsweb.acc.jlab.org/CSUEApps/atlis/task/18793</i>	10/29/19	10/29/19	
Other ILD Studies	10/30/19	11/3/19	
SL RF On <i>October 18-20: Much of the C30s and C50s brought up. No C100s. https://logbooks.jlab.org/entry/3735406</i>	10/18/19	11/24/19	
NL RF On	10/19/19	11/24/19	
SRF Commisioning (NL Only) <i>October 18-20: 1L25 and 1L20 comissioning began. 1L20 entries: https://logbooks.jlab.org/entry/3735215 https://logbooks.jlab.org/entry/3735228 https://logbooks.jlab.org/entry/3735235 https://logbooks.jlab.org/entry/3735278 https://logbooks.jlab.org/entry/3735282 https://logbooks.jlab.org/entry/3735284 https://logbooks.jlab.org/entry/3735277 1L25 entries: https://logbooks.jlab.org/entry/3735349 https://logbooks.jlab.org/entry/3735417</i>	10/18/19	11/3/19	
C100 FE Measurement w/ GM Tubes <i>Powers Atlis Inc</i>	11/4/19	11/4/19	
Set Energy (RF Push)	11/4/19	11/5/19	

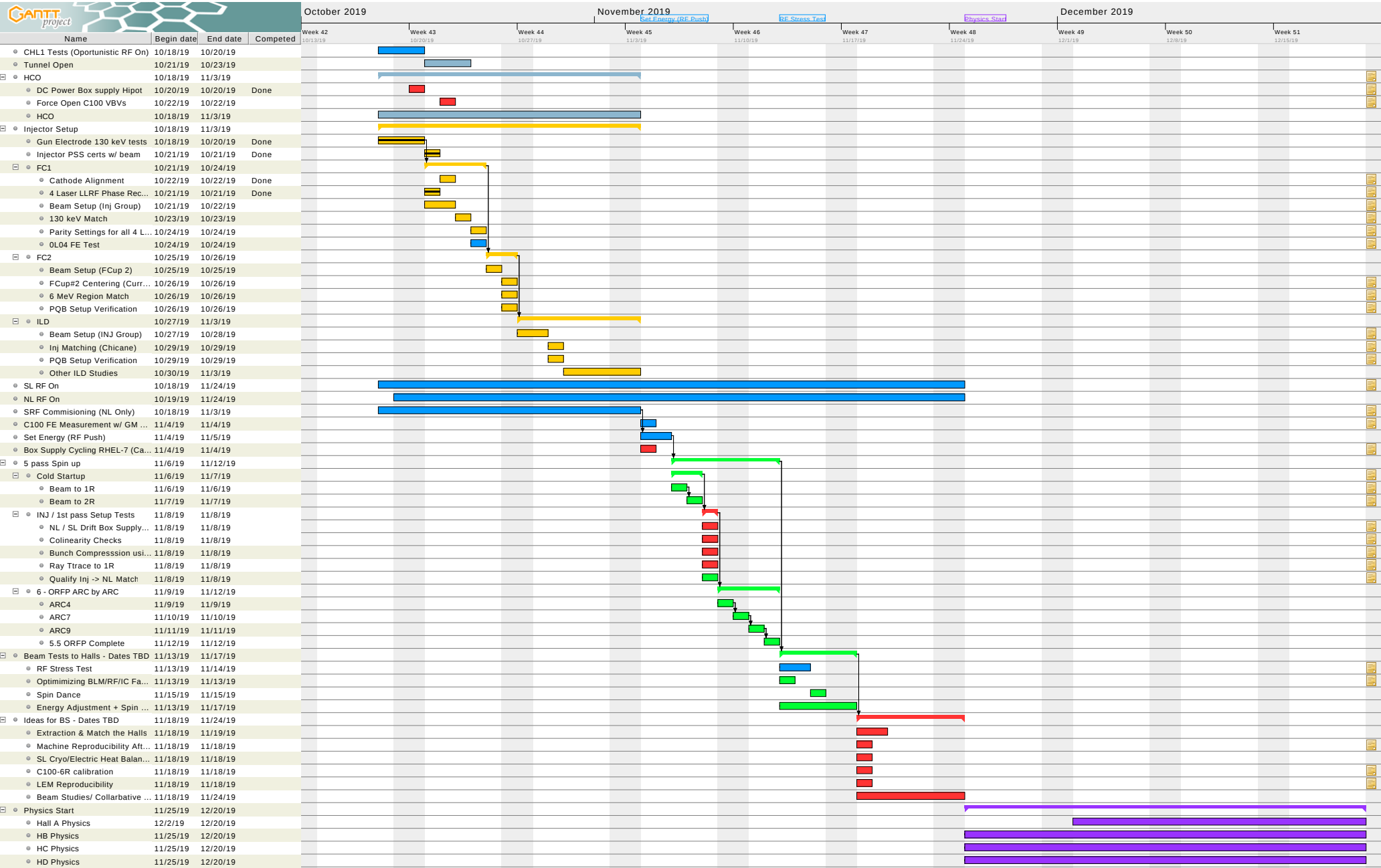
Tasks

Name	Begin date	End date	Completed
Box Supply Cycling RHEL-7 (Cade) <i>http://opsweb.acc.jlab.org/CSUEApps/atlis/atlis.php?load=Task&task_id=19184</i> <i>Can be done during RF Push, after DC Power HCO, and before 5 pass spin up</i>	11/4/19	11/4/19	
5 pass Spin up	11/6/19	11/12/19	
Cold Startup <i>Atlis Freeman & Aiken</i>	11/6/19	11/7/19	
Beam to 1R <i>Thread Beam Hand Phase Tune Energy Phaser</i>	11/6/19	11/6/19	
Beam to 2R <i>Thread through SL Hand Phase SL 2E Match SL Phaser</i>	11/7/19	11/7/19	
INJ / 1st pass Setup Tests	11/8/19	11/8/19	
NL / SL Drift Box Supply Calibration <i>http://opsweb.acc.jlab.org/CSUEApps/atlis/task/18319 Yves to to identify contact (Still Doug Higinbotham?)</i>	11/8/19	11/8/19	
Colinearity Checks <i>Position and timing colinearity for all 4 lasers. Check degree of colinearity through to 1R. Check 4 lasers vs. NL Gang phase. ATLI task needed?</i>	11/8/19	11/8/19	
Bunch Compresssion using 0L04 <i>Use Arc Bunch length measurment process to give max compression using 0L04 (minimum spot size in Arc 1 High dispersive region) at Max energy. Freeman to develop and ATLI task for this.</i>	11/8/19	11/8/19	
Ray Ttrace to 1R <i>Tief / Yves</i>	11/8/19	11/8/19	
Qualify Inj -> NL Match <i>Step 1-4 in ORFP. Uses 1L02, 1L06, 1L10 viewers to qualify match from the Injector. Is there a better way? Try INJ FOpt correctors to FOpt to 1R?</i>	11/8/19	11/8/19	
6 - ORFP ARC by ARC	11/9/19	11/12/19	
ARC4	11/9/19	11/9/19	
ARC7	11/10/19	11/10/19	

Tasks

Name	Begin date	End date	Completed
ARC9	11/11/19	11/11/19	
5.5 ORFP Complete	11/12/19	11/12/19	
Beam Tests to Halls - Dates TBD	11/13/19	11/17/19	
RF Stress Test	11/13/19	11/14/19	
<i>Spin up 5 pass beam to Hall A. Optimize RF and Beam transport with 600 kW in the Machine. http://opsweb.acc.jlab.org/CSUEApps/atlis/task/19791</i>			
Optimizing BLM/RF/IC Faults	11/13/19	11/13/19	
<i>Perhaps needed to be done during RF stress testing.</i>			
<i>May also require re-calibration of BLM? BLMs too sensitive? BLM setup procedure attached to: http://opsweb.acc.jlab.org/CSUEApps/atlis/task/16634</i>			
Spin Dance	11/15/19	11/15/19	
Energy Adjustment + Spin Dance	11/13/19	11/17/19	
Ideas for BS - Dates TBD	11/18/19	11/24/19	
Extraction & Match the Halls	11/18/19	11/19/19	
Machine Reproducibility After Wein Flips	11/18/19	11/18/19	
<i>Rematching Early INJ Testing</i>			
SL Cryo/Electric Heat Balancing - Tief	11/18/19	11/18/19	
C100-6R calibration	11/18/19	11/18/19	
<i>Jay Atlis</i>			
LEM Reproducibility	11/18/19	11/18/19	
<i>Yves to Write ATLIs Checking Early NL Bypass</i>			
Beam Studies/ Collaborative Checks	11/18/19	11/24/19	
Physics Start	11/25/19	12/20/19	
Hall A Physics	12/2/19	12/20/19	
HB Physics	11/25/19	12/20/19	
HC Physics	11/25/19	12/20/19	
HD Physics	11/25/19	12/20/19	

Gantt Chart



Resources Chart

7

[illegible]