

Project manager

Project dates

Oct 18, 2019 - Dec 21, 2019

Completion

42%

Tasks

68

Resources

0

## Tasks

Name	Begin date	End date	Completed
CHL1 Tests (Oportunistic RF On)	10/18/19	10/20/19	Done
Tunnel Open	10/21/19	10/29/19	
<i>Tunnel open last open day will Monday 10/28 for 1L07 tuner cable work. RadCon Checklists have been completed for Inj, NL, SL, and BSY.</i>			
HCO	10/18/19	11/3/19	
DC Power Box supply Hipot	10/20/19	10/20/19	Done
<i>October 17 - 20: DC Power got high potting completed and most shunt checks are finished. Punch list developed. Arc 10 string needs investigation Arc 10 Work: <a href="https://logbooks.jlab.org/entry/3735720">https://logbooks.jlab.org/entry/3735720</a> Arc 10 String Fixed: MXPAA17 kixon circuit</i>			
Force Open C100 VBVs	10/22/19	10/22/19	Done
<i>All done except for 1L25 valves, which are new. <a href="http://devweb.acc.jlab.org/CSUEApps/atlis/task/19792">http://devweb.acc.jlab.org/CSUEApps/atlis/task/19792</a></i>			
HCO	10/18/19	11/3/19	
Injector Setup	10/18/19	11/3/19	
Gun Electrode 130 keV tests	10/18/19	10/20/19	Done
Injector PSS certs w/ beam	10/21/19	10/21/19	Done
<i><a href="https://logbooks.jlab.org/entry/3735532">https://logbooks.jlab.org/entry/3735532</a></i>			
FC1	10/21/19	10/26/19	
Cathode Alignment	10/22/19	10/22/19	Done
<i><a href="http://opsweb.acc.jlab.org/CSUEApps/atlis/task/18799">http://opsweb.acc.jlab.org/CSUEApps/atlis/task/18799</a></i>			
4 Laser LLRF Phase Recovery	10/21/19	10/21/19	Done
<i><a href="http://opsweb.acc.jlab.org/CSUEApps/atlis/task/19407">http://opsweb.acc.jlab.org/CSUEApps/atlis/task/19407</a> Results in: <a href="https://logbooks.jlab.org/entry/3735638">https://logbooks.jlab.org/entry/3735638</a></i>			
Beam Setup (Inj Group)	10/21/19	10/22/19	Done
<i><a href="https://logbooks.jlab.org/entry/3735744">https://logbooks.jlab.org/entry/3735744</a> <a href="https://logbooks.jlab.org/entry/3737073">https://logbooks.jlab.org/entry/3737073</a></i>			
130 keV Match	10/23/19	10/23/19	Done
<i><a href="http://opsweb.acc.jlab.org/CSUEApps/atlis/task/19805">http://opsweb.acc.jlab.org/CSUEApps/atlis/task/19805</a></i>			
Parity Settings for all 4 Lasers	10/24/19	10/24/19	
<i><a href="http://opsweb.acc.jlab.org/CSUEApps/atlis/task/19670">http://opsweb.acc.jlab.org/CSUEApps/atlis/task/19670</a></i>			

## Tasks

Name	Begin date	End date	Completed
OL04 FE Test <i>http://devweb.acc.jlab.org/CSUEApps/atlis/task/18979</i> <i>https://logbooks.jlab.org/entry/3737033</i> <i>https://logbooks.jlab.org/entry/3737037</i>	10/24/19	10/24/19	Done
PQB Verification <i>https://logbooks.jlab.org/entry/3737125</i>	10/26/19	10/26/19	Done
Reproducibility Studies <i>https://logbooks.jlab.org/entry/3737045</i> <i>https://logbooks.jlab.org/entry/3737050</i>	10/25/19	10/25/19	Done
FC2	10/27/19	10/27/19	
Beam Setup (FCup 2)	10/27/19	10/27/19	Done
FCup#2 Centering (Current Discrepancy Investigation) <i>http://devweb.acc.jlab.org/CSUEApps/atlis/task/19617</i> <i>https://logbooks.jlab.org/entry/3737012</i>	10/27/19	10/27/19	Done
6 MeV Region Match <i>http://opswbweb.acc.jlab.org/CSUEApps/atlis/task/19786</i>	10/27/19	10/27/19	
PQB Setup Verification <i>http://opswbweb.acc.jlab.org/CSUEApps/atlis/task/18793</i>	10/27/19	10/27/19	
ILD	10/28/19	11/3/19	
Beam Setup (INJ Group) <i>https://logbooks.jlab.org/entry/3737280</i> <i>https://logbooks.jlab.org/entry/3737286</i> <i>https://logbooks.jlab.org/entry/3737540</i>	10/28/19	10/29/19	Partially
Inj Matching (Chicane)	10/29/19	10/29/19	
PQB Setup Verification <i>http://opswbweb.acc.jlab.org/CSUEApps/atlis/task/18793</i>	10/29/19	10/29/19	
Other ILD Studies	10/30/19	11/3/19	
SL RF On <i>October 18-20: Much of the C30s and C50s brought up. No C100s.</i> <i>https://logbooks.jlab.org/entry/3735406</i>	10/18/19	11/24/19	Partially
NL@2K	10/24/19	10/24/19	Done
NL RF On <i>Injector ZOnes and up to 1L17 have been turned on. Punch list in development</i>	10/25/19	11/30/19	Partially

## Tasks

Name	Begin date	End date	Completed
<b>SRF Commisioning (NL Only)</b> <i>October 18-20: 1L25 and 1L20 comissioning began.</i> <i>1L20 entries:</i> <a href="https://logbooks.jlab.org/entry/3735215">https://logbooks.jlab.org/entry/3735215</a> <a href="https://logbooks.jlab.org/entry/3735228">https://logbooks.jlab.org/entry/3735228</a> <a href="https://logbooks.jlab.org/entry/3735235">https://logbooks.jlab.org/entry/3735235</a> <a href="https://logbooks.jlab.org/entry/3735278">https://logbooks.jlab.org/entry/3735278</a> <a href="https://logbooks.jlab.org/entry/3735282">https://logbooks.jlab.org/entry/3735282</a> <a href="https://logbooks.jlab.org/entry/3735284">https://logbooks.jlab.org/entry/3735284</a> <a href="https://logbooks.jlab.org/entry/3735277">https://logbooks.jlab.org/entry/3735277</a> <a href="https://logbooks.jlab.org/entry/3737563">https://logbooks.jlab.org/entry/3737563</a> <i>1L25 entries:</i> <a href="https://logbooks.jlab.org/entry/3735349">https://logbooks.jlab.org/entry/3735349</a> <a href="https://logbooks.jlab.org/entry/3735417">https://logbooks.jlab.org/entry/3735417</a> <a href="https://logbooks.jlab.org/entry/3737066">https://logbooks.jlab.org/entry/3737066</a> <a href="https://logbooks.jlab.org/entry/3737194">https://logbooks.jlab.org/entry/3737194</a> <a href="https://logbooks.jlab.org/entry/3737257">https://logbooks.jlab.org/entry/3737257</a> <a href="https://logbooks.jlab.org/entry/3737493">https://logbooks.jlab.org/entry/3737493</a> <a href="https://logbooks.jlab.org/entry/3737518">https://logbooks.jlab.org/entry/3737518</a>	10/18/19	11/3/19	
<b>C100 FE Measurement w/ GM Tubes</b> <i>Powers Atlas Inc</i>	11/4/19	11/4/19	
<b>Set Energy (RF Push)</b>	11/4/19	11/4/19	
<b>Box Supply Cycling RHEL-7 (Cade)</b> <a href="http://opsweb.acc.jlab.org/CSUEApps/atlis/atlis.php?load=Task&amp;task_id=19184">http://opsweb.acc.jlab.org/CSUEApps/atlis/atlis.php?load=Task&amp;task_id=19184</a> <i>Can be done during RF Push, after DC Power HCO, and before 5 pass spin up</i>	11/4/19	11/4/19	
<b>5 pass Spin up</b>	11/6/19	11/12/19	
<b>Cold Startup</b> <i>Atlas Freeman &amp; Aiken</i>	11/6/19	11/7/19	
<b>Beam to 1R</b> <i>Thread Beam</i> <i>Hand Phase</i> <i>Tune Energy</i> <i>Phaser</i>	11/6/19	11/6/19	
<b>Beam to 2R</b> <i>Thread through SL</i> <i>Hand Phase SL</i> <i>2E Match</i> <i>SL Phaser</i>	11/7/19	11/7/19	
<b>INJ / 1st pass Setup Tests</b>	11/8/19	11/8/19	

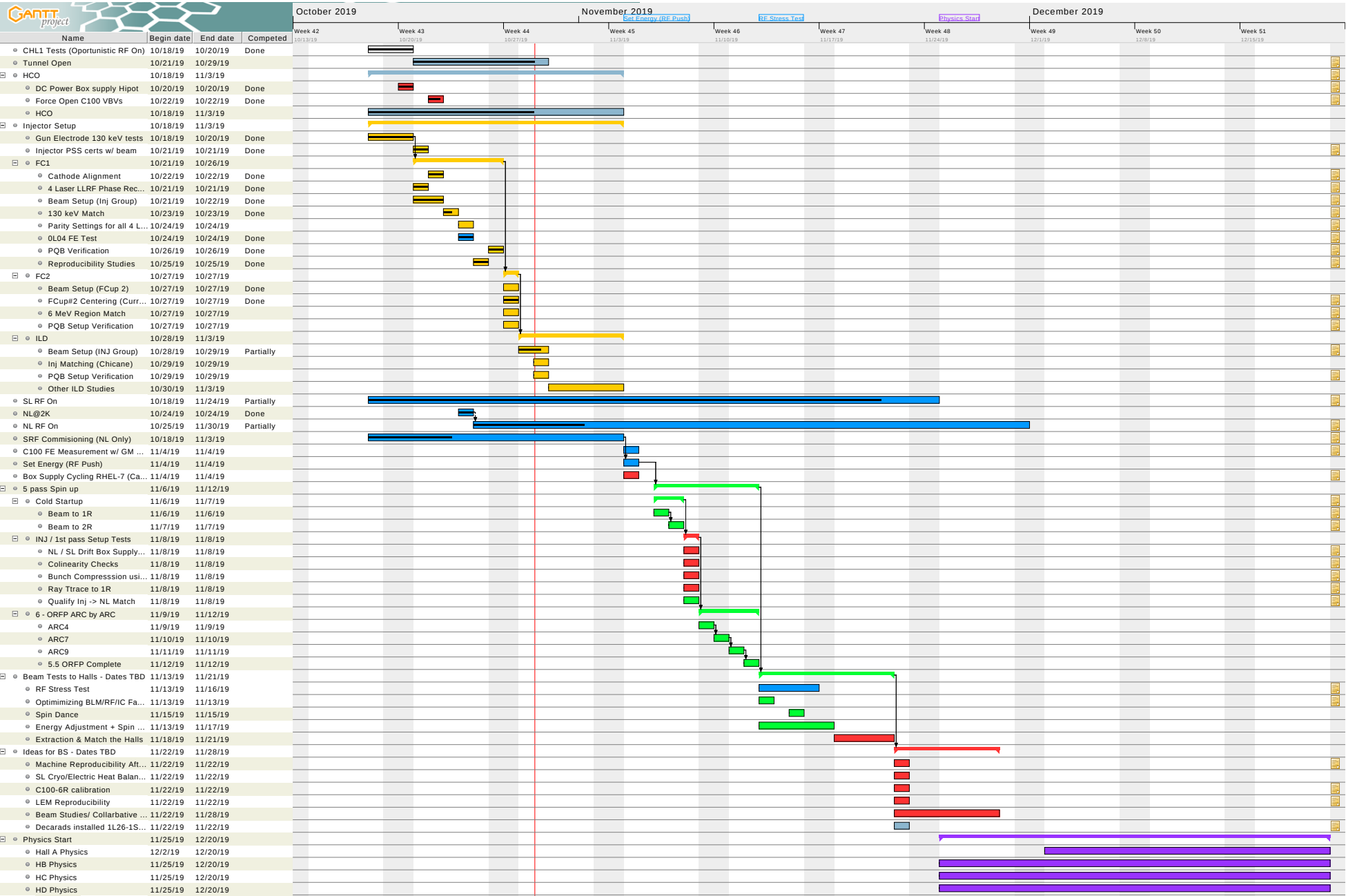
## Tasks

Name	Begin date	End date	Completed
NL / SL Drift Box Supply Calibration <i><a href="http://opsweb.acc.jlab.org/CSUEApps/atlis/task/18319">http://opsweb.acc.jlab.org/CSUEApps/atlis/task/18319</a> Yves to to identify contact (Still Doug Higinbotham?)</i>	11/8/19	11/8/19	
Colinearity Checks <i>Position and timing colinearity for all 4 lasers. Check degree of colinearity through to 1R. Check 4 lasers vs. NL Gang phase. ATIs task needed?</i>	11/8/19	11/8/19	
Bunch Compression using OL04 <i>Use Arc Bunch length measurement process to give max compression using OL04 (minimum spot size in Arc 1 High dispersive region) at Max energy. Freeman to develop and ATIs task for this.</i>	11/8/19	11/8/19	
Ray Trace to 1R <i>Tief / Yves</i>	11/8/19	11/8/19	
Qualify Inj -> NL Match <i>Step 1-4 in ORFP. Uses 1L02, 1L06, 1L10 viewers to qualify match from the Injector. Is there a better way? Try INJ FOpt correctors to FOpt to 1R?</i>	11/8/19	11/8/19	
6 - ORFP ARC by ARC	11/9/19	11/12/19	
ARC4	11/9/19	11/9/19	
ARC7	11/10/19	11/10/19	
ARC9	11/11/19	11/11/19	
5.5 ORFP Complete	11/12/19	11/12/19	
Beam Tests to Halls - Dates TBD	11/13/19	11/21/19	
RF Stress Test <i>Spin up 5 pass beam to Hall A. Optimize RF and Beam transport with 600 kW in the Machine. <a href="http://opsweb.acc.jlab.org/CSUEApps/atlis/task/19791">http://opsweb.acc.jlab.org/CSUEApps/atlis/task/19791</a></i>	11/13/19	11/16/19	
Optimizing BLM/RF/IC Faults <i>Perhaps needed to be done during RF stress testing.  May also require re-calibration of BLM? BLMs too sensitive? BLM setup procedure attached to: <a href="http://opsweb.acc.jlab.org/CSUEApps/atlis/task/16634">http://opsweb.acc.jlab.org/CSUEApps/atlis/task/16634</a></i>	11/13/19	11/13/19	
Spin Dance	11/15/19	11/15/19	
Energy Adjustment + Spin Dance	11/13/19	11/17/19	
Extraction & Match the Halls	11/18/19	11/21/19	
Ideas for BS - Dates TBD	11/22/19	11/28/19	

## Tasks

Name	Begin date	End date	Completed
Machine Reproducibility After Wein Flips <i>Rematching Early INJ Testing</i>	11/22/19	11/22/19	
SL Cryo/Electric Heat Balancing - Tief	11/22/19	11/22/19	
C100-6R calibration <i>Jay Atlis</i>	11/22/19	11/22/19	
LEM Reproducibility <i>Yves to Write ATLIs</i> <i>Checking Early NL Bypass</i>	11/22/19	11/22/19	
Beam Studies/ Collarbatative Checks	11/22/19	11/28/19	
Decarads installed 1L26-1S01 <i><a href="https://logbooks.jlab.org/entry/3737044">https://logbooks.jlab.org/entry/3737044</a></i> <i><a href="https://logbooks.jlab.org/entry/3736197">https://logbooks.jlab.org/entry/3736197</a></i>	11/22/19	11/22/19	
Physics Start	11/25/19	12/20/19	
Hall A Physics	12/2/19	12/20/19	
HB Physics	11/25/19	12/20/19	
HC Physics	11/25/19	12/20/19	
HD Physics	11/25/19	12/20/19	

Gantt Chart



Resources Chart

		October 2019				November 2019				December 2019		
Name	Default role	Week 42 10/13/19	Week 43 10/20/19	Week 44 10/27/19	Week 45 11/3/19	Week 46 11/10/19	Week 47 11/17/19	Week 48 11/24/19	Week 49 12/1/19	Week 50 12/8/19	Week 51 12/15/19	