



29/06/2022

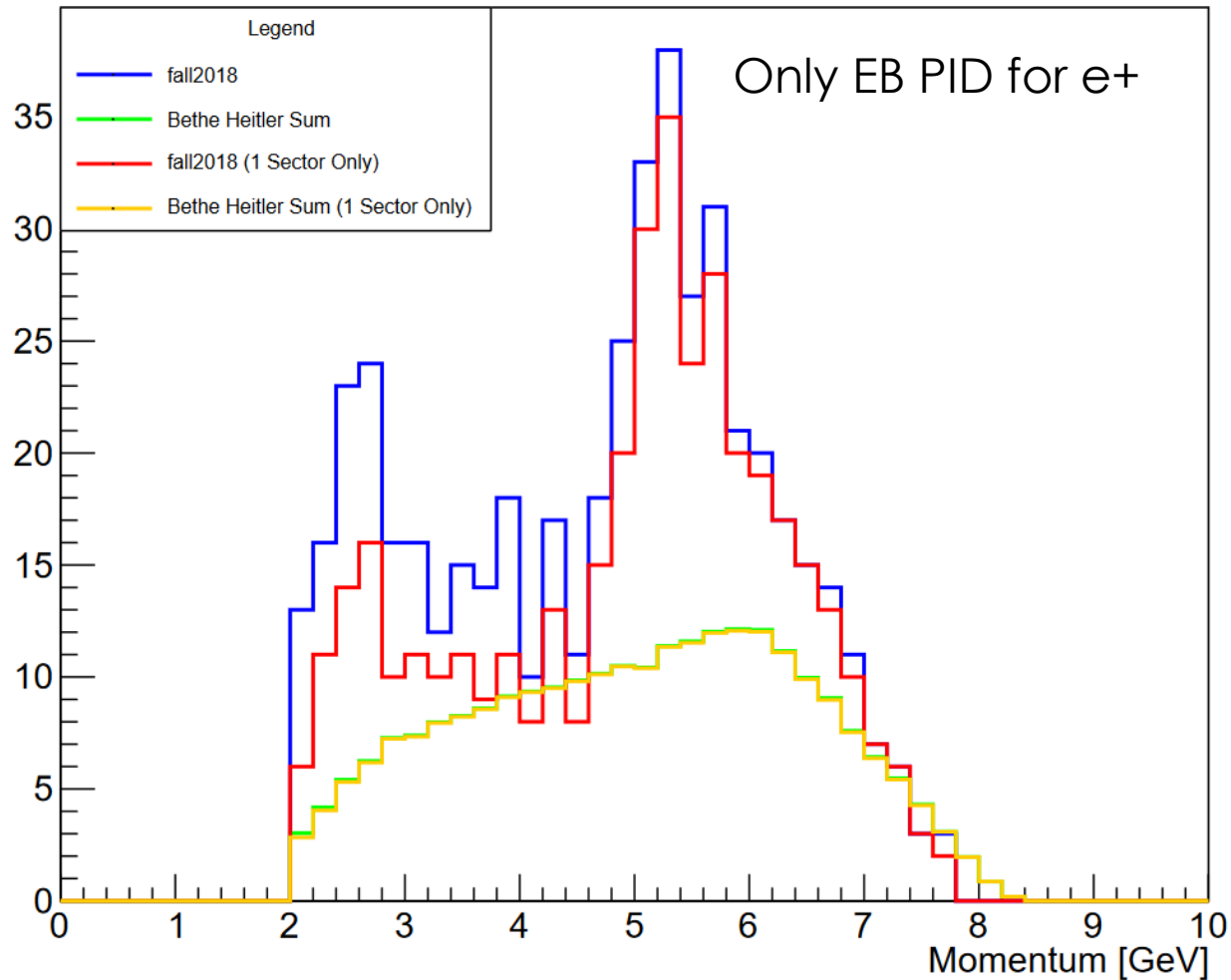
RICHARD TYSON

Cuts

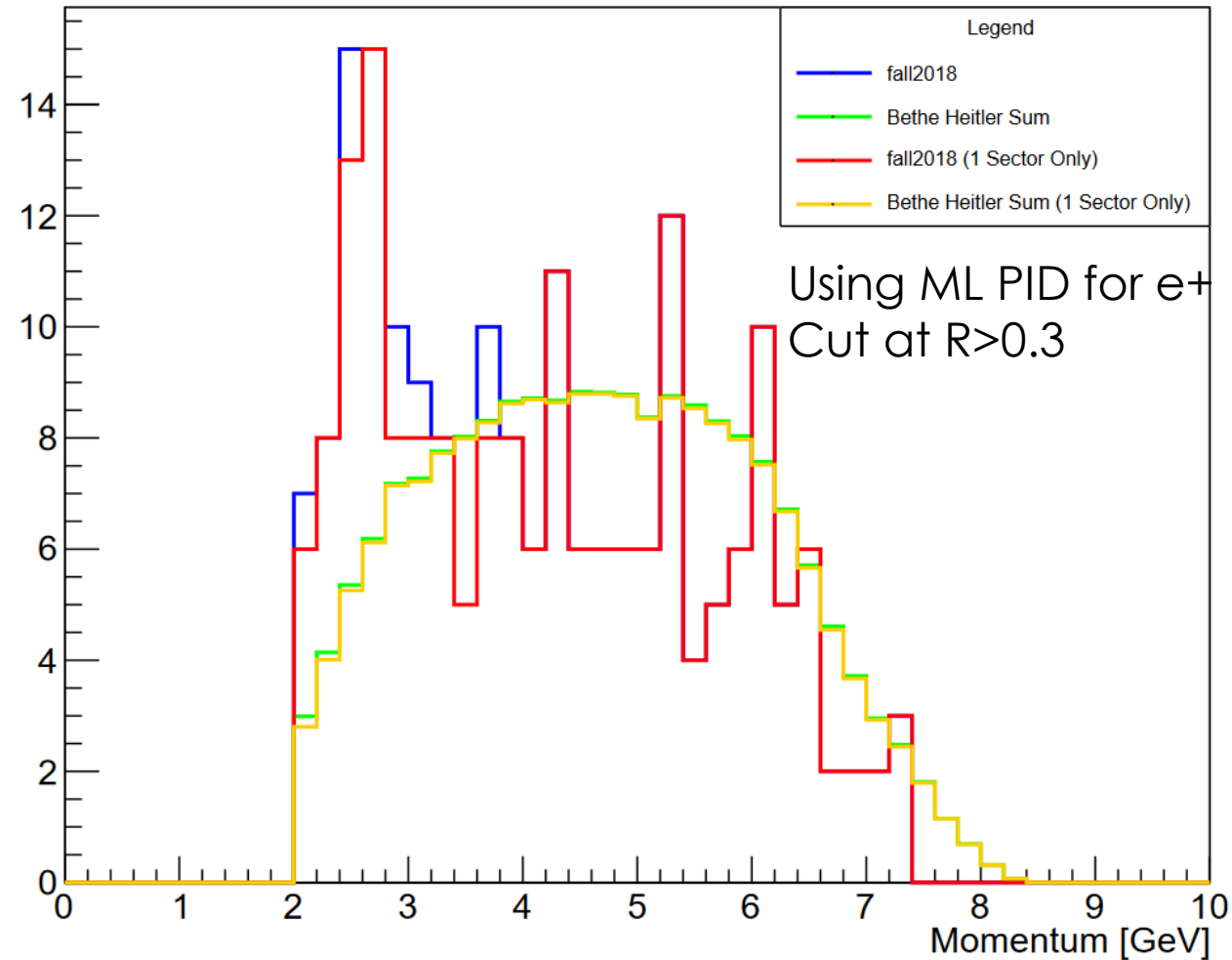
- ▶ $|M^2| < 0.1 \text{ GeV}^2$ & $Q^2 < 0.1 \text{ GeV}^2$
- ▶ All particles IDed with Event Builder (EB) PID
- ▶ All particle in FD
- ▶ $e^+ P > 2 \text{ GeV}$, $e^- P > 0.2 \text{ GeV}$, $pP > 0.1 \text{ GeV}$
- ▶ e^+/e^- in opposite sector
- ▶ $E_{\text{gamma}} > 8.3 \text{ GeV}$
- ▶ $2 < e^+ e^- \text{ Invariant Mass} < 2.8 \text{ GeV}$
- ▶ 1 Sector Only means same sector for hits in HTCC/DC/Ecin/PCAL
- ▶ e^+ ID based on machine learning classifier (not applied everywhere)

e^+ with hits in different sectors

e^+ Momentum

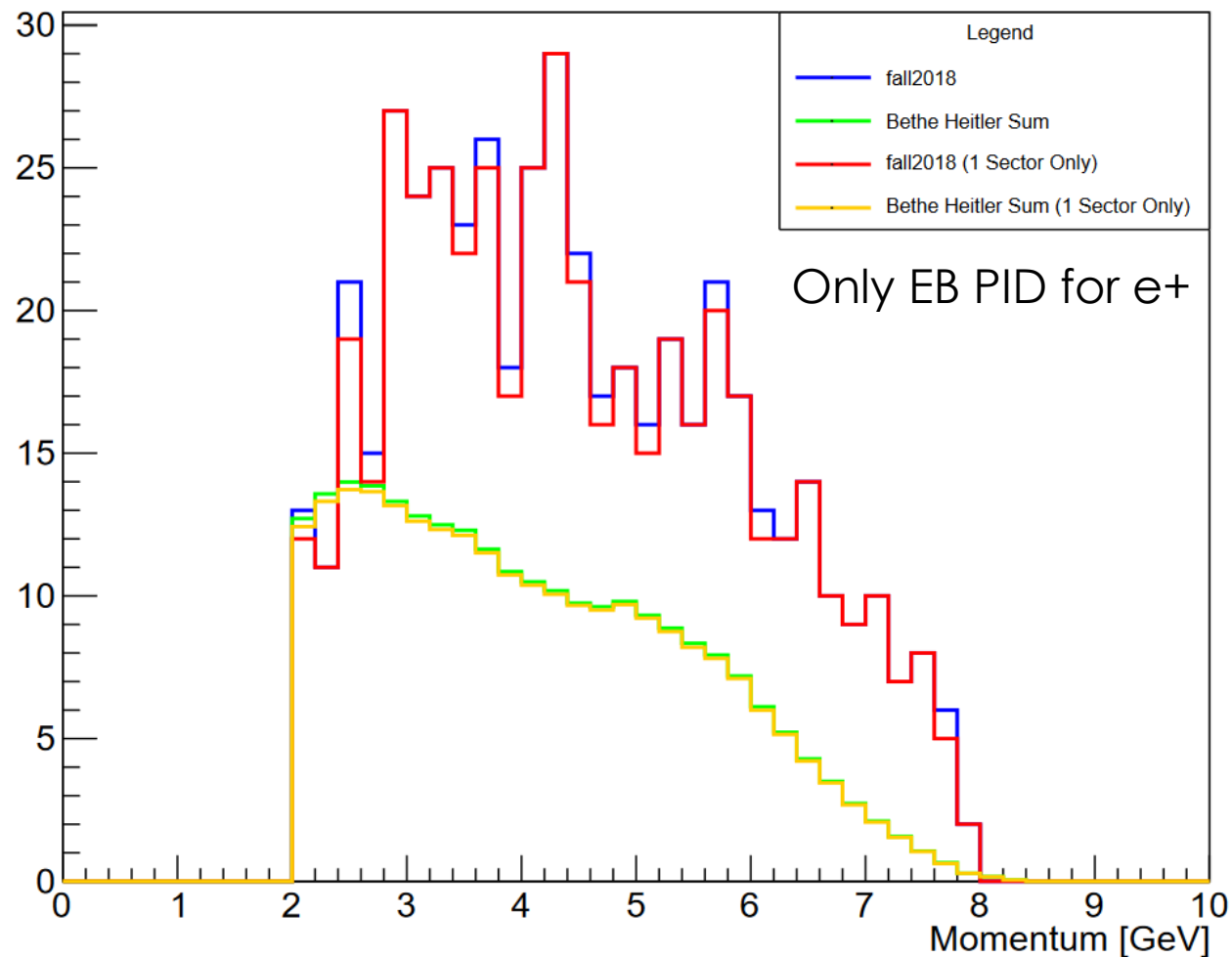


e^+ Momentum



e^- with hits in different sectors

e^- Momentum



e^- Momentum

