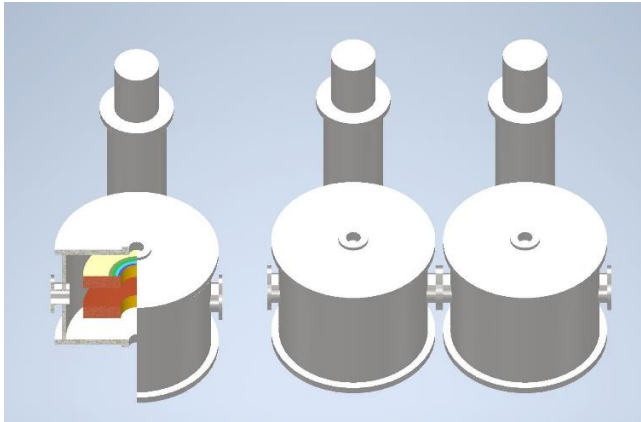
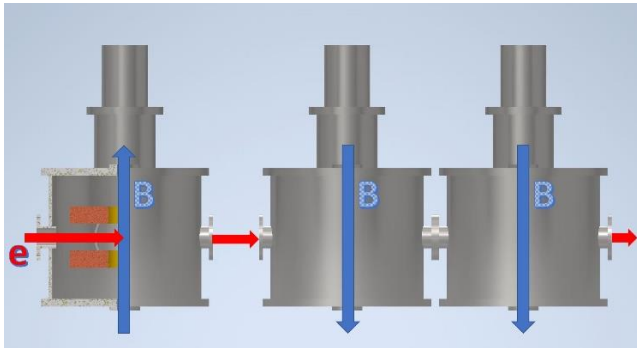


Chicane Magnets

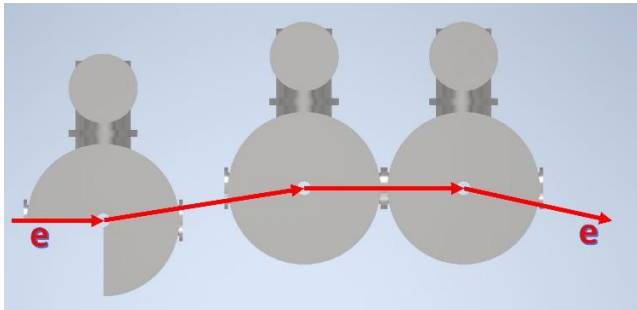
In order to set the electron beams at the desired entrance angle for the transversely polarized target cryostat, 3 identical commercially available 5 Tesla superconducting split coils magnets¹ will be used to generate the desired beam bending. The arrangement of cryostats with pulsed tube is shown in Figure 1. The side view, Picture 2, and top view, Picture 3 demonstrate the magnetic field directions and beam chicane, respectively. Utilizing the identical commercially available magnets will cut down the design time and cost, and ease the construction complications.



Picture 1.



Picture 2.



Picture 3.

¹ Cryomagnetics Inc., www.cryomagnetics.com