

Manual for CLAS12 Ring Imaging Cherenkov Counter

Authors:

M. Contalbrigo (mcontalb@jlab.org)

V. Kubarovsky (vpk@jlab.org)

M. Mirazita (mirazita@jlab.org)

F. Benmokhtar (fatiha@jlab.org)

J. Goodwill (goodwi12@duq.edu)

October 11, 2016

Contents

1	General description of the RICH	2
2	The RICH Electronics	4
2.1	Photodetectors and Front-End electronics	4
2.2	HV and LV Power Supply	5
3	The RICH Gas Systems	6
3.1	Nitrogen Purge System	6
3.2	The Cooling System	8
4	The RICH monitors	8
4.1	RICH EPICS	10
4.2	Temperature Sensors	11
4.3	Air Cooling System	11
4.4	Nitrogen Purge System	12
4.5	Low Voltage Control	12
4.6	High Voltage Control	13

1 General description of the RICH

The first module of the CLAS12 Ring Imaging Cherenkov (RICH) detector is installed on the forward carriage in Sector 4, downstream of the third region of drift chambers and just before the Time-Of-Flight (TOF) system. A second RICH module is foreseen for the starting of operation with transversely polarized target. It's goal is to provide identification of kaons with respect to pions and protons at a 4σ level in the momentum range between 3 and 8 GeV/c for polar angles up to 35° . The RICH design incorporates aerogel radiators, visible light photon detectors, and a focusing mirror system which is used to reduce the detection area instrumented by photon detectors to about 1 m^2 . Multi-anode photomultiplier tubes (MAPMTs) Hamamatsu H8500 and H12700 provide the required spatial resolution and match the aerogel Cherenkov light spectrum (visible and near-ultraviolet region).

The RICH is composed by a large trapezoidal box made in aluminum and carbon fiber, with smaller base of about 0.3 m, a larger base of about 4.2 m, a height of about 3.7 m and a depth of about 1.2 m. The total weight is approximately 900 Kg. Two drawings of the RICH box frontal and backward views are shown in figure 1.

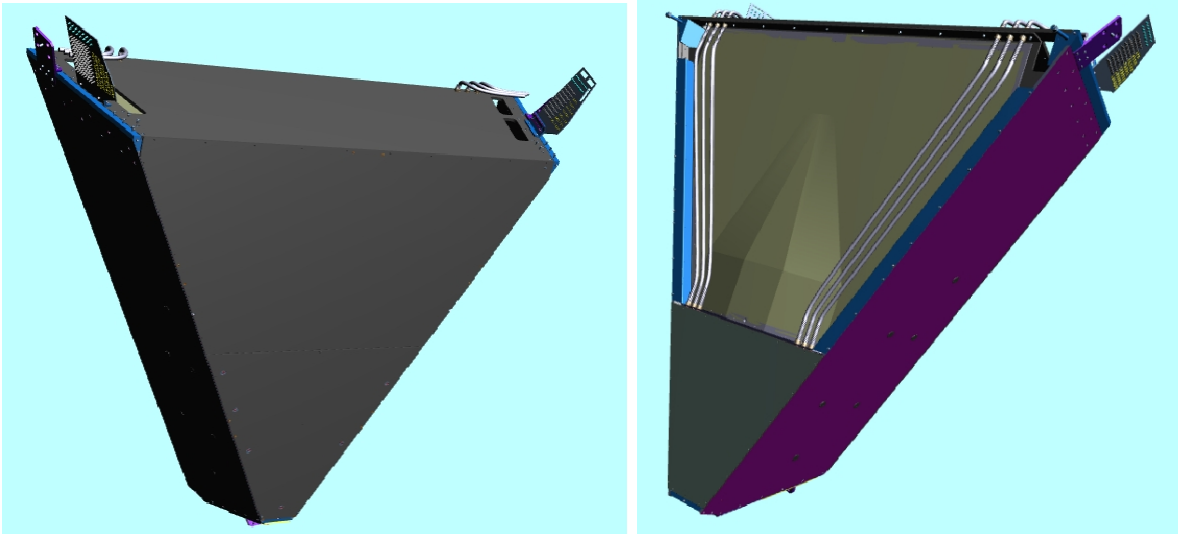


Figure 1: Back and frontal drawings of the RICH module.

Inside the RICH box, a number of active elements are installed, namely:

- the aerogel radiator;
- the planar and spherical mirrors;
- the MAPMTs and the readout Front-End Electronics (FEE).

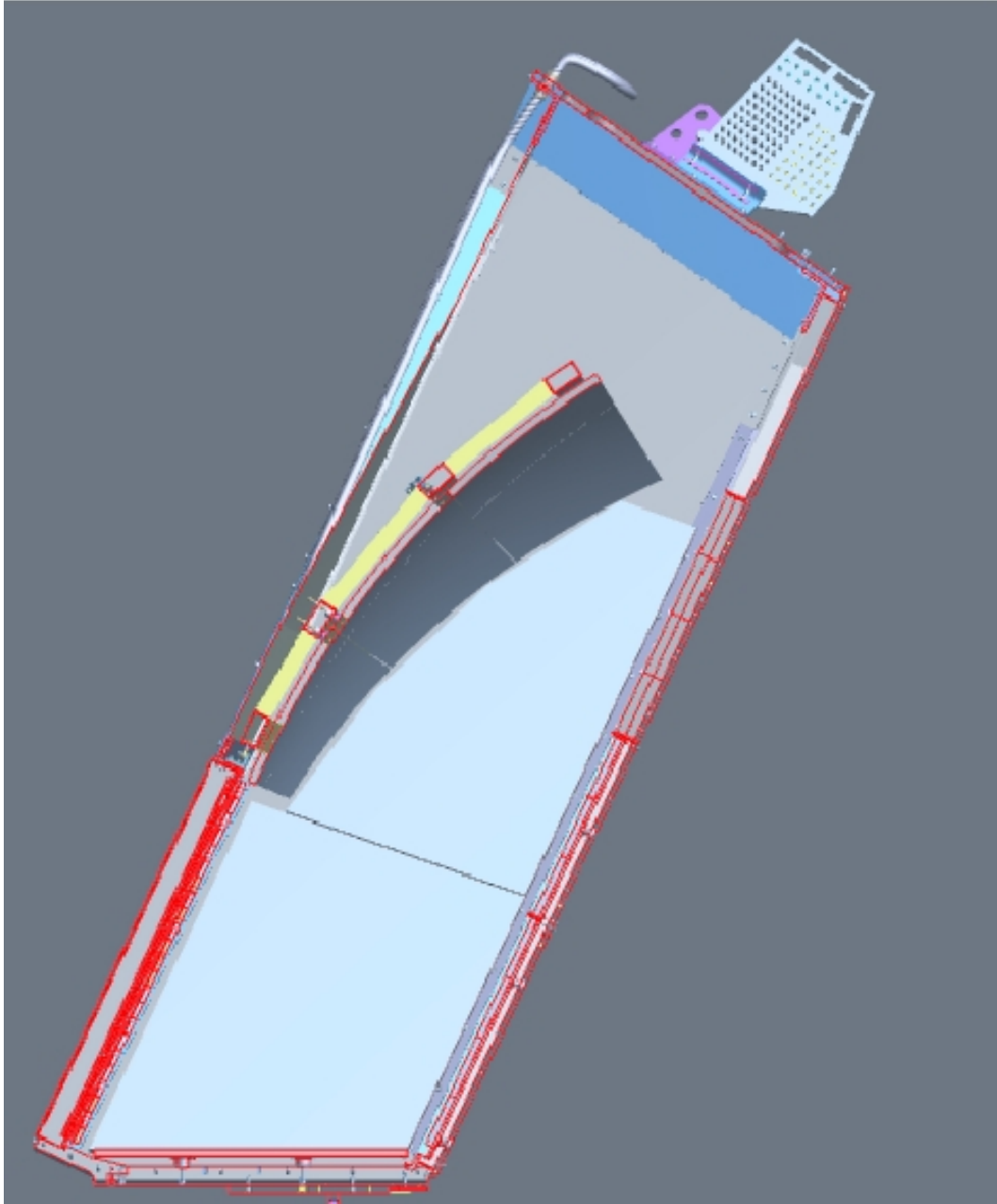


Figure 2: Cross section of the RICH.

A cross section of the RICH showing the inner elements in shown in figure 2.

The aerogel is an igrophilic material that absorbs water from the environment humidity, resulting in a reduction of its optical performance. For this reason, a strict protocol to handle it has been established during the test and assembly. In addition, the RICH box volume is fluxed with dry nitrogen, in order to prevent water absorption during the operation of the detector.

The detection of the Cherenkov photon is achieved by means of 391 Multi-Anode PhotoMultiplier Tubes (MAPMTs) and the Front-End Electronics (FEE), mounted on a triangular box, about 1.7 m wide, 1.3 m high and about 10 cm thick, that is installed on the lower back of the RICH module.

2 The RICH Electronics

2.1 Photodetectors and Front-End electronics

The Cherenkov photons are detected by using 391 MAPMTs Hamamatsu H8500 and H12700. They are mounted on a carbon fiber panel installed on the lower back of the RICH and that also host the Front-End electronics.

Photodetectors and Front-End electronics are organized in tiles housing groups of 2 or 3 MAPMTs, see Fig. 3 for the 3 MAPMT case. There are 23 tiles with 2 MAPMTs and 113 tiles with 3 MAPMTs. Each tile is composed by an adapter board, an ASIC board and a FPGA board.

The adapter board ensure the connection between the MAPMTs and the ASIC board and also supplies the HV to the MAPMTs. The ASIC board houses the MAROC3 chips, one per MAPMT. The Multi Anode Read Out Chip (MAROC3) is a 64 channel Application Specific Integrated Circuit (ASIC), able to discriminate the 64 channels PMT output signals and produce 64 corresponding binary outputs. The chip provides single channel adjustable gain in the range between 0 and 4 and one adjustable threshold level. The MAROC3 chip is configured, controlled and readout by an FPGA, that also provide the LV supply to the the ASIC board and the interface with the DAQ via optical link.

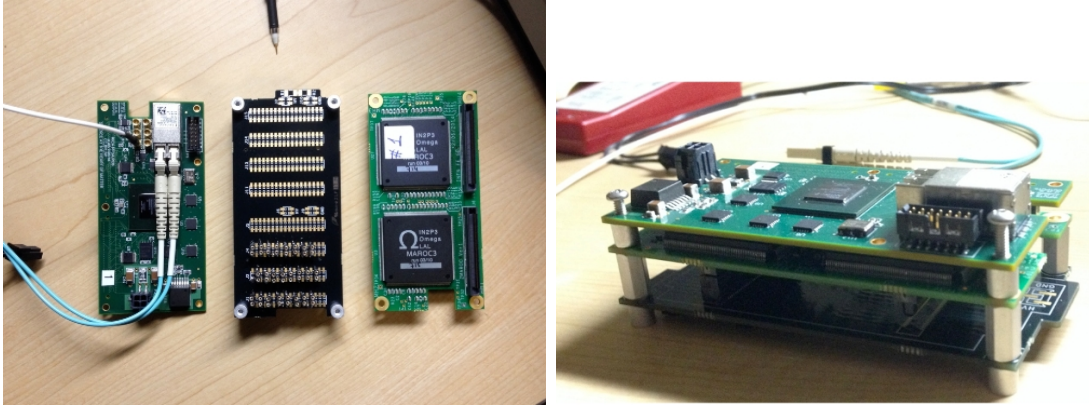


Figure 3: The RICH electronic boards for the 2 MAPMT case (left) and the tile fully assembled (right).

The list of the components of the RICH readout electronics is reported in figure 4.

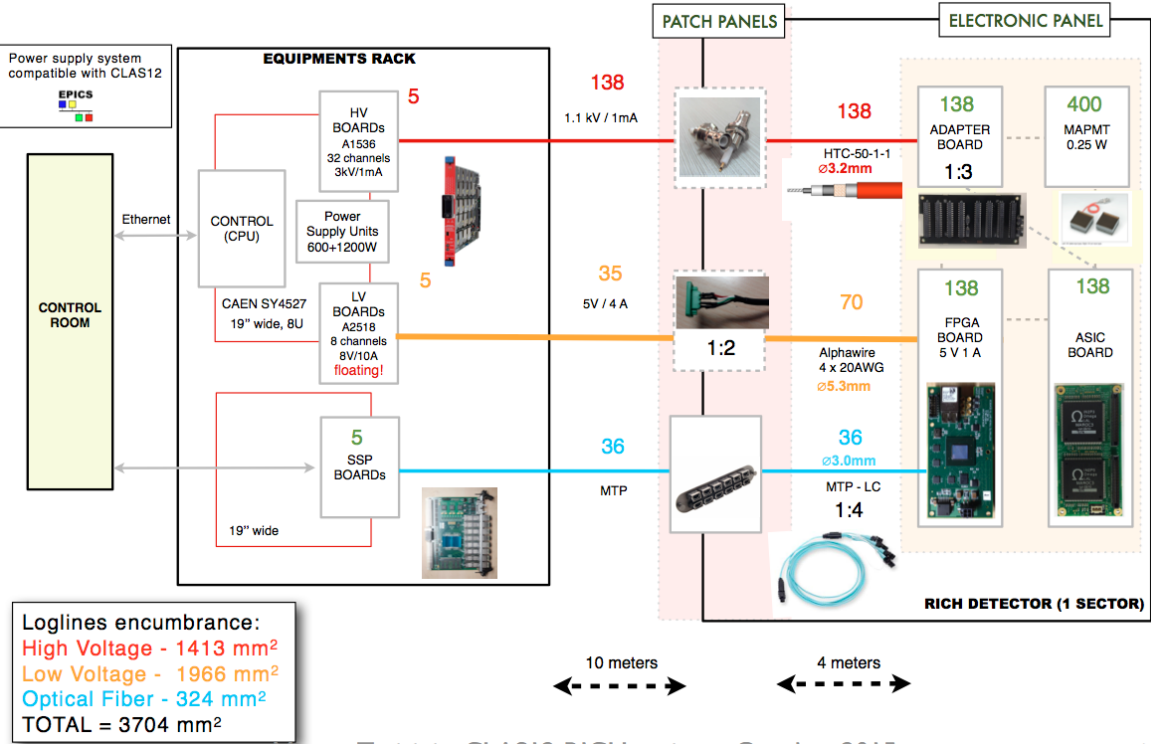


Figure 4: Sketch of the RICH services: LV, HV supply lines and DAQ optical link.

2.2 HV and LV Power Supply

The low voltage and high voltage power supply is a CAEN SY4527, see Fig. 5.

The unit supplies LV and HV power to 138 electronics tiles (RETile), 115 housing 3 MA-PMTs (RETile-3x) and 30 housing 2 MA-PMTs (RETile-2x). It runs on EPICS for Slow-Control with same procedures and controls already developed for other detectors (i.e. HPS ECAL). It houses:

Nr.	Item	Unit	Comment
1	Control board	A4528	With software libraries (EPICS, OPC Server)
1	Power unit	A4533	1800 watt in total at 220 Volt AC
5	HV Board	A1563	32 channels, 3kV/1mA, Common Floating Return
5	LV Board	A2518	8 channels, 8V/10A, Individual Floating
5	Adapter	A647	Radiall (dense) to SHV (robust)

Each HV channel connects one RETile. The HV runs on 138 RG58 cables towards the patch panels mounted on the RICH case, and on 138 HTC-50-1-1 cables inside the RICH volume. The HV should be set between 1000 V (nominal) and 1100 V (maximum). The single channel current depends on the number of served MA-PMTs and should range between 0.5 (RETile-2x) and 0.8 mA (RETile-3x).

Each LV channel serves four RETiles. The LV runs on 35 AWG16 cables towards the patch panels connectors (Phoenix 8A) where it is 1:4 splitted into 138 AWG20 copper cables, one per RETile. To provide the wanted 5 V at the electronics, the LV should be set in the range between 5.1 and 5.4 V, corresponding to the voltage at the patch panel where sense wires provide feedback for LV stabilization. The LV current

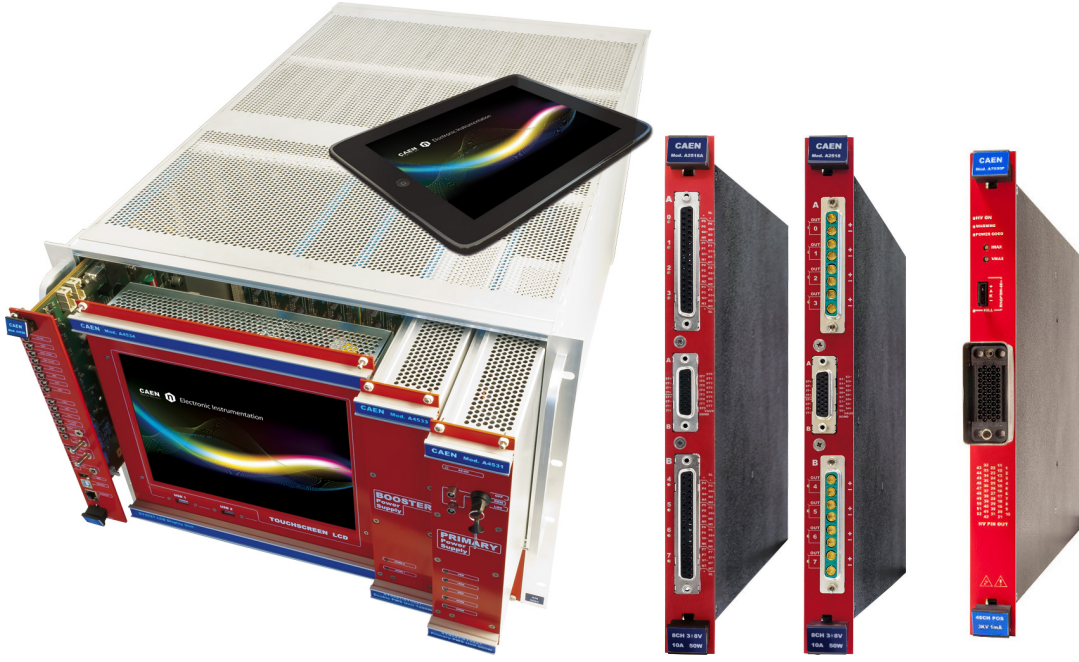


Figure 5: The CAEN SY4527 power supply.

per channel should be around 4 A as it supplies about 1 A per RETile. The low voltage supply line is designed to not have difficulties to get the wanted voltage because of high current. If that is the case contact run coordinator or RICH electronic experts.

The low voltage power supply is an Agilent 6621. It should be set with both channels at +5V with their current limits at 6 A, while external wiring inverts one channel to create a bipolar $\pm 5V$ supply. The low voltage supply might have difficulties to get to full voltage because of high current. If that was the case check, with all power supplies off, that all connection are goods. Then contact run coordinator to see if LV power supply addition is possible.

3 The RICH Gas Systems

The RICH is serviced by two different gas systems, one for the supply of the nitrogen to be fluxed inside the RICH box and one for the cooling of the FEE. Both systems are managed through controls and monitors integrated in the CLAS12 software. The two systems have been dimensioned in such a way that they will be able to serve two RICH modules.

3.1 Nitrogen Purge System

In order to preserve the aerogel optical performance, the RICH box environment must be kept dry by fluxing nitrogen. The nitrogen system supplies the amount of gas necessary to fill the box (about 5 cubic meters) and to compensate for the gas leakage. A complete refill of the volume per day is expected under normal operating conditions. A slight overpressure of 0.5 mbar prevents from the contamination from the outside air. The system is shown in Fig. 14. It is based on a 1500 Gallons dewar of liquid nitrogen connected to the RICH box through a on/off valve with a pressure regulator, a 0.01

micron filter to remove all the impurities and flow-meters. In figure 7, we report the list of the components of the system.

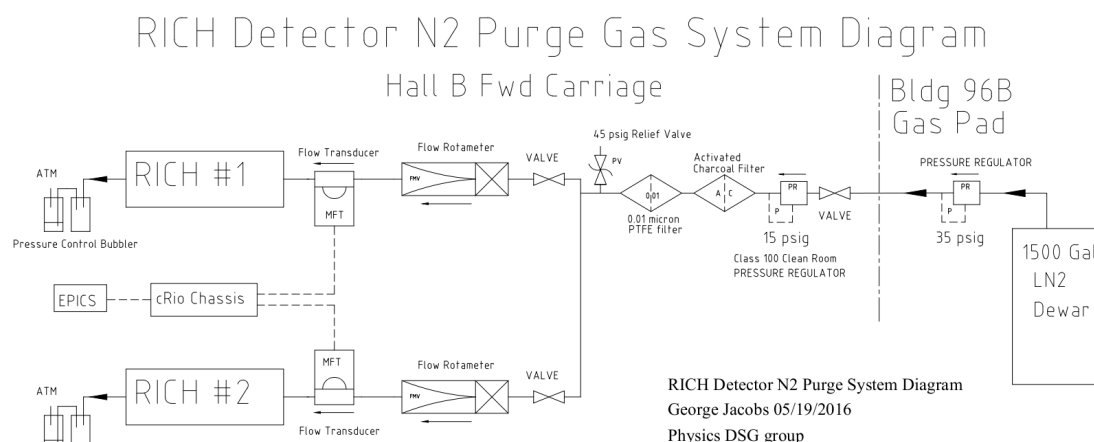


Figure 6: Schematic of the nitrogen supply system.

Component	Part Number	Details	Units Required
N2 supply shut off valve	1/2" SS ball valve	On Hand	3
High Purity Pressure Regulator	McMaster Carr part# 4238K42	Class 100 Clean Room press reg	1
pressure gauge for regulator	McMaster Carr part # 4238k47	Class 100 Clean Room press gauge	1
activated charcoal filter	Praxair part # PRSG6140-3	filter housing with activated charcoal element	1
0.01 micron Teflon Membrane line filter	Praxair part # PRS5103	Teflon Membrane line filter, 0.01 micron	2
replacement activated charcoal filter	Praxair part # PRSG6143	replacement filter	1
relief valve	circle seal part # D520T1-2M-45	45 psi poppet relief valve	1
rotometer	Dwyer part# RMB-49-SSV	0.0-5.0 SCFH (2360 sccm), SS valve	2
Mass Flow Transducer	MKS part# GM50A135035B3020	5000 sccm range, 1/4" swagelock fittings, 0-5 vdc analog, 15 p	3
Pressure Control Bubbler and oil trap bubbler assemblies			2
Mason Jars	McMaster Carr part # 3231T44	quart size, vacuum sealable wide mouth jar	4
1/2" bulkhead fittings	Swagelock parts #B-810-61	Swagelock 1/2" bulkhead fitting	8
1/2" SS tubing for dip tubes and bubbler to oil trap connection		on hand	2
1/2" 90 degree fittings	Swagelock part# B-810-9	Swagelock 90 degree elbow	8
Black nylon tubing	McMaster Carr part # 5112K56	1/2" OD black nylon tubing	200
misc fittings, ferrules, unions, tees, etc	swagelock fittings	Required to connect lines to components	1
Cush clamps, misc brackets, mounting hardware, unistrut	various	Required to mount components, strain relief	1

Figure 7: Complete list of the components of the nitrogen supply system.

The slow control checks online the correct functionality of the system, i.e.:

- Minimum pressure in the liquid nitrogen dewar;
- Minimum flow inside the RICH box;
- Purity of the gas fluxed inside the RICH box.

In the case of failure of the purity control, the valve is automatically turned off and the flow stopped, to prevent possible damage to the aerogel.

3.2 The Cooling System

One tile with two or three MAPMs produces about 3.35 or 3.8 W of heat load, respectively. The total load in the whole FEE box is 514 W. This heat load must be dissipated far from the CLAS12 detectors in order to keep the FEE box temperature below 40 °C, the safety limit imposed by the TOF detector which is few cm downstream of the RICH.

The FEE RICH cooling system is based on two high capacity air compressors that supply clean dry air at room temperature. The capacity of each compressor must be large enough so that, in case of failure of one of the two, the other has sufficient capacity to supply the necessary cooling power to two RICH modules. The compressors charge a 1000 liter capacity air tank. Air pressure is reduced to supply manual valve flow meters. In the case of a power outage, the air tank should contain sufficient air to remove the latent heat of the FEE package. The characteristics of the compressors are shown in table 1.

Dimensions	1.4 x 0.7 x 1.8 m ³
Weight	515 kg
Max Flow rate	1200 l/min
Dew point	3 °C
Electric power	10.4 kW
Noise press	60 dB (A)

Table 1: The characteristics of the ATLAS Copco SF11-8 MC FF compressors.

Powering up the electronics package inside the RICH without cooling may result in severe damage of the RICH and of other detectors or even fire. To eliminate this hazard, the RICH HV and LV power supply operations are interlocked to the proper functioning of the cooling system.

A schematic of the RICH cooling system with the interlock circuits is shown in figure 8 and the list of its components is reported in figure 9. It includes a number of temperature sensors installed inside the electronics box, air flow transducers and high purity pressure regulators connected to the inlets and a local pressure regulators on the air tank. The interlock performs two functions in case of a cooling system failure.

- turn off power to the electronic package;
- prevent energizing the electronics package.

There are three cooling circuit interlocks. A first interlock requires the minimum of one compressor correctly functioning. The second interlock requires a minimum air pressure in the tank. The third interlock require a minimum air flow inside the RICH box. All three interlocks must be true in order for the electronics package to have power.

4 The RICH monitors

In this section, we illustrate the general scheme for the RICH operation and monitor controls.

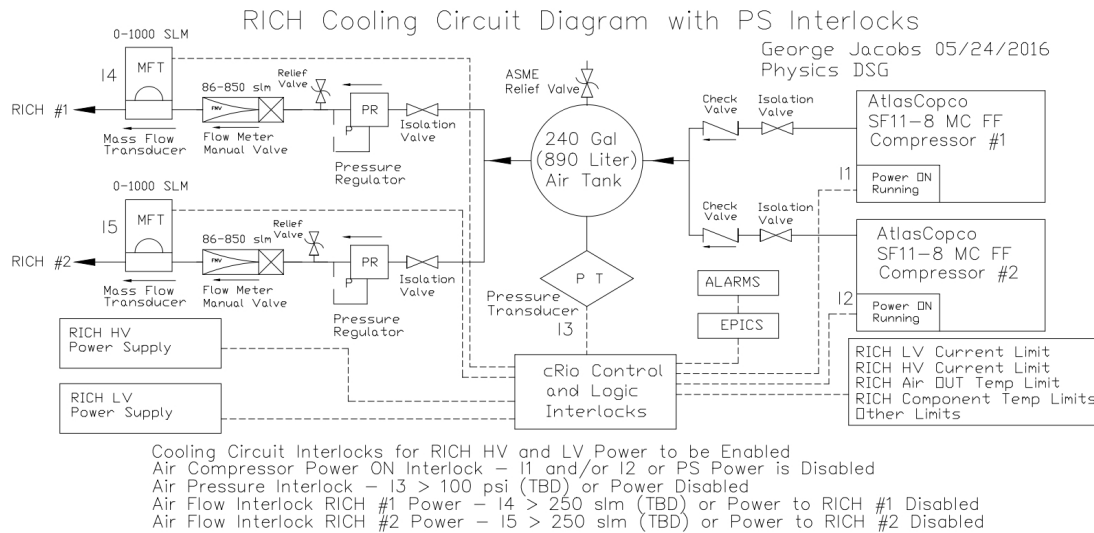


Figure 8: Schematic of the cooling system and interlocks.

Component	Part Number	Details	Units Required
Air Tank Pressure Transducer (I3)	MKS 722B24TBA2A	range 400 psi, 1/2" tube, 0-10 vdc out, 9 pin D type,	1
Air Flow Transducer (I4 and I5)	MKS 0579A 01332LS3BV	range 0-300 slm, 1/2" swagelock fitting, 15 pin D type	3
Flow Control Rotameter	Dwyer RMC-121-SSV	0-10 scfm (283 slm), SS control valve	2
High Purity Pressure Regulator	McMaster Carr part # 49305K23	5-55 psi range, 1" FPT	2
Local Pressure Gauges – Tank	McMaster Carr part # 4000k791	0-200 psi	1
Local Pressure Gauges – Supply	McMaster Carr part # 4000k721	0-100 psi	2
Check Valves	Swagelock # SS-CHS16-1	1" valve, 1 psid	2
Fittings Estimate	TBD	Compression and pipe fittings	30
Isolation Valves	In House Supply	Valves are on hand and available	0
SS piping	1" SS tubing	Estimate Required	
Fittings	Pipe Fitting to connect tubing	Estimate Required	
ASME Relief Valve for Tank	Requires Analysis	Pressure System Requirements	1
Relief Valves for Supply	Requires Analysis	Pressure System Requirements	2
Compressor Running Transducer	Atlas Copco	Atlas Copco	2
Air Supply Flex Lines	TBD	Need Layout with Routing to Estimate lengths	
Detector Air Out Temp Sensor	TBD	RICH group	2
Detector Air In Temp/H2O	TBD	RICH group /DSG	2
Compressors	RICH Group	Atlas Copco	2
ASME Air Tank	RICH Group	ASME Tank	1

Figure 9: Complete list of the components of the cooling system and interlocks.

4.1 RICH EPICS

All RICH controls will be accessible through EPICS, from the main CLAS_EPICS window (figure 10). If not already running, it can be opened by executing the command

`clas_epics`

in a terminal on any of the `clonpc##` workstations in the Hall-B counting house.

*All shift workers should be using user **clasrun** for all instructions in this document.*

The primary RICH screen is shown in figure 11 and opened via the **RICH** button in the right side of the main CLAS EPICS screen (figure 10).

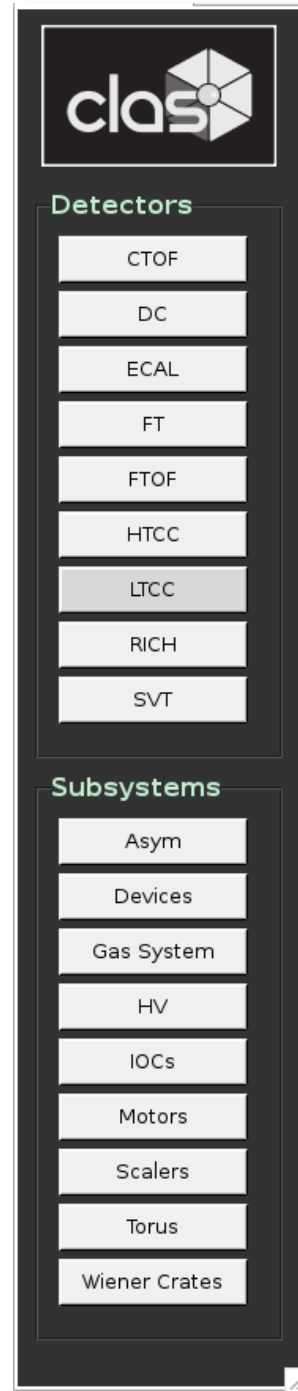


Figure 10: View of the Hall-B EPICS main window.

The main RICH screen combines all basic RICH EPICS controls and monitoring into one window. It is accessible from the **RICH** button in figure 10. This includes embedded versions of the dedicated screens in the following sections: temperature sensors, air-cooling compressors, nitrogen purge system and low and high voltage.

This screen provides the only RICH *controls* shift workers should need, which is to turn HV on and off via the red and green **ALL ON** and **ALL OFF** buttons. However, this should be supplemented by the strip charts for temperature and HV current.

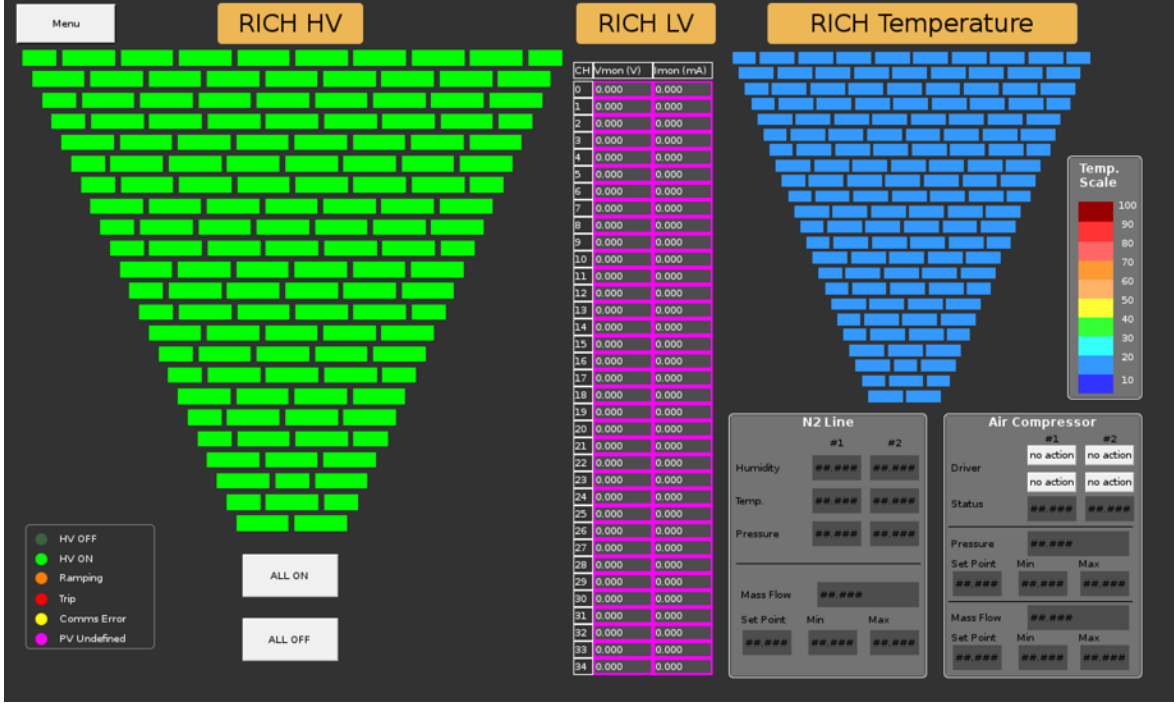


Figure 11: The primary EPICS screen needed for shift workers to monitor RICH.

4.2 Temperature Sensors

The RICH DAQ records the temperature of each of the 138 FPGA chips every few seconds. Several temperature sensors are placed in the RICH enclosure and should be monitored through RICH's main EPICS screen and the strip charts shown in figure 12. Variations of two degrees F or more during a shift should be reported to RICH expert on call and noted in the log book. The strip charts are accessible from the two buttons in the temperature section of Figure 10.

4.3 Air Cooling System

The cooling allows to keep the RICH electronic panel at the constant temperature and should be ON at all times. In order to prevent temperature stress on RICH components and adjacent detectors, an interlock prevent the HV and LV power to be active without a properly functioning cooling. As other gas systems in Hall-B, the cooling circuit is controlled via a cRio device and can be monitored through the EPICS

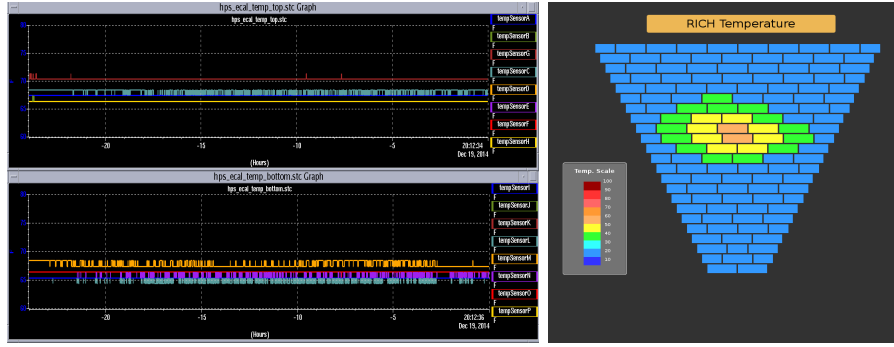


Figure 12: View of the EPICS temperature monitoring strip charts (left) and the temperature portion of the main RICH EPICS screen (right).

controls (figure 13). Shift takers should not attempt to change the cooling system settings and call RICH expert in case of problem.

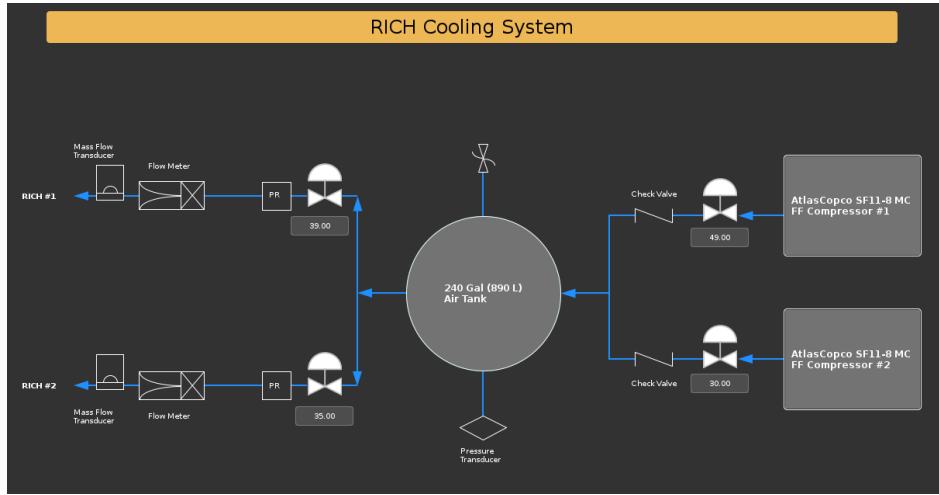


Figure 13: RICH air cooling system control.

4.4 Nitrogen Purge System

In order to preserve the aerogel optical performance, the RICH box environment must be kept dry by fluxing nitrogen. The EPICS control screen is shown on Fig. 14.

4.5 Low Voltage Control

The low voltage supply of the RICH is controlled and monitored using the main RICH EPICS window (Figure 11). It has buttons to ramp up and down the entire RICH voltages (labeled **ALL ON** and **ALL OFF**), open windows for individual channel control (see figure 15), and open more detailed expert views.

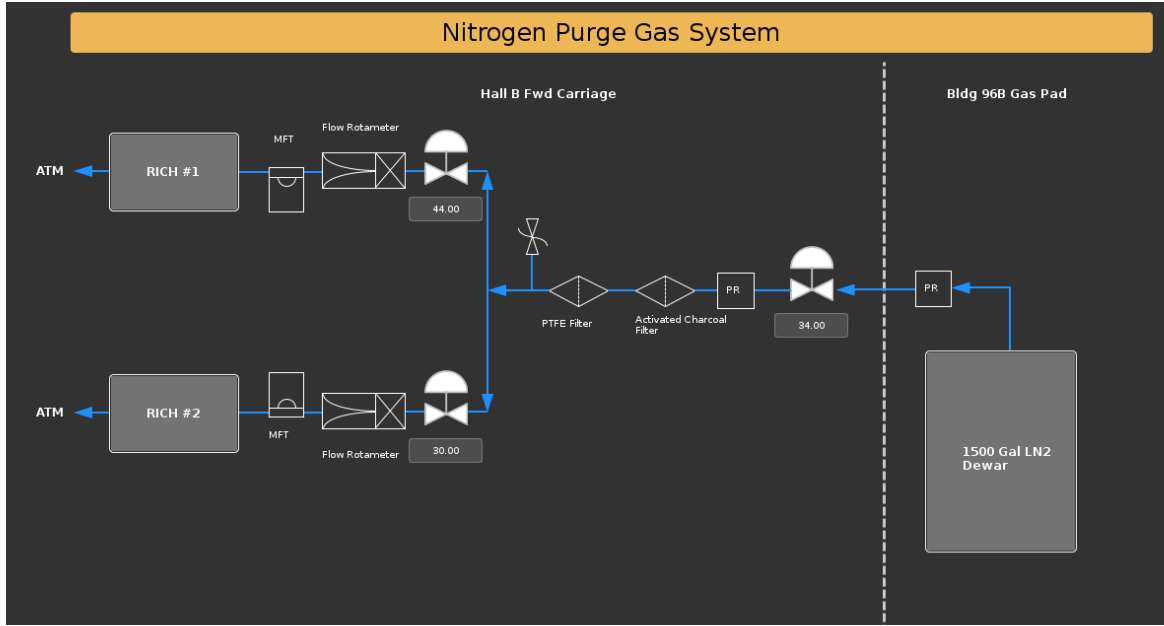


Figure 14: RICH nitrogen supply system control.

#	Description	Pwr	Vmon	Imon	Status	Vset (V)		Iset (uA)		Vmax (V)		Up (V/s)		Down (V/s)	
0	B_DET_RICH_IV_CH0	OFF	0.000	0.000		0.000	0.000	0.00	0.00	0.00	0.00	0.00	0.00	0.00	0.00
0	B_DET_RICH_IV_CH1	OFF	0.000	0.000		0.000	0.000	0.00	0.00	0.00	0.00	0.00	0.00	0.00	0.00
0	B_DET_RICH_IV_CH2	OFF	0.000	0.000		0.000	0.000	0.00	0.00	0.00	0.00	0.00	0.00	0.00	0.00
0	B_DET_RICH_IV_CH3	OFF	0.000	0.000		0.000	0.000	0.00	0.00	0.00	0.00	0.00	0.00	0.00	0.00
0	B_DET_RICH_IV_CH4	OFF	0.000	0.000		0.000	0.000	0.00	0.00	0.00	0.00	0.00	0.00	0.00	0.00
0	B_DET_RICH_IV_CH5	OFF	0.000	0.000		0.000	0.000	0.00	0.00	0.00	0.00	0.00	0.00	0.00	0.00
0	B_DET_RICH_IV_CH6	OFF	0.000	0.000		0.000	0.000	0.00	0.00	0.00	0.00	0.00	0.00	0.00	0.00
0	B_DET_RICH_IV_CH7	OFF	0.000	0.000		0.000	0.000	0.00	0.00	0.00	0.00	0.00	0.00	0.00	0.00
0	B_DET_RICH_IV_CH8	OFF	0.000	0.000		0.000	0.000	0.00	0.00	0.00	0.00	0.00	0.00	0.00	0.00

Figure 15: Cropped view of the EPICS LV control window for individual channels of the RICH detector.

4.6 High Voltage Control

The high voltage supply of the RICH is controlled and monitored using the main RICH EPICS window (Figure 11). It has buttons to ramp up and down the entire RICH voltages (labeled **ALL ON** and **ALL OFF**), open windows for individual channel control, and open more detailed expert views (see Fig. 16).







Description	Pw	Vmon	Imon	Status	Vset (V)		Iset (uA)		Vmax (V)		Up (V/s)		Down (V/s)	
HV_ROW1_PANEL1		100.00	5.30	ON	100.00	100	5	5	200	200	10	10	14	15
HV_ROW1_PANEL2		101.00	5.20	ON	101.00	100	5	5	199	200	10	10	15	15
HV_ROW1_PANEL3		103.00	5.20	ON	103.00	100	5	5	201	200	10	10	15	15
HV_ROW1_PANEL4		101.00	5.00	ON	100.00	100	5	5	202	200	10	10	15	15
HV_ROW1_PANEL5		102.00	4.99	ON	102.00	100	5	5	202	200	10	10	15	15
HV_ROW1_PANEL6		100.00	5.00	ON	100.00	100	5	5	201	200	9	10	14	15

Figure 16: Cropped view of the EPICS HV control window for individual channels of the RICH detector.