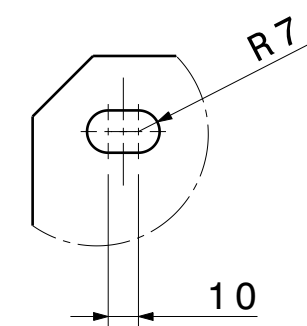
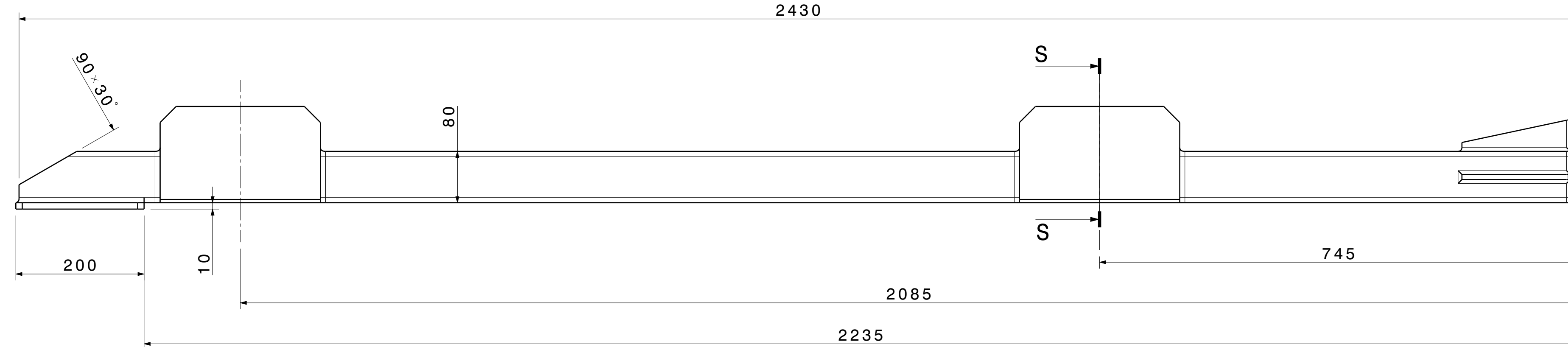


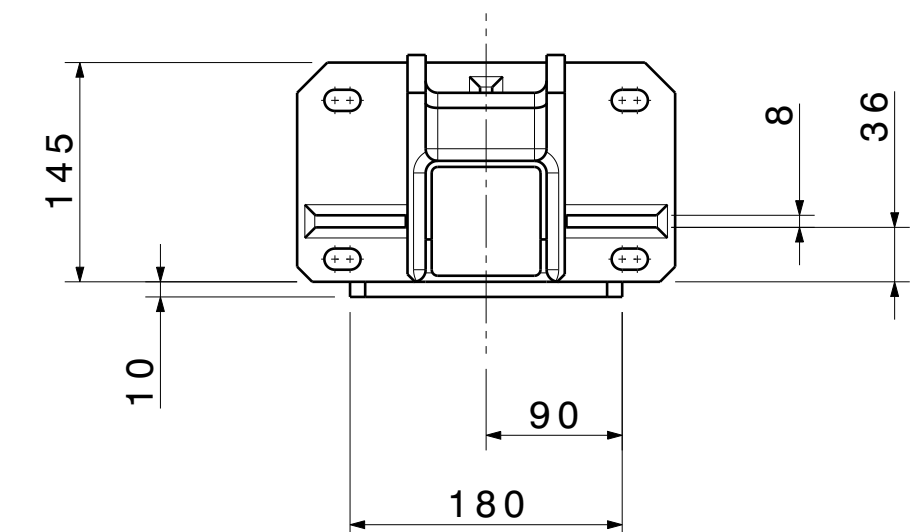
Auxiliary view U
Scale: 1:5



Detail V
Scale: 2:5

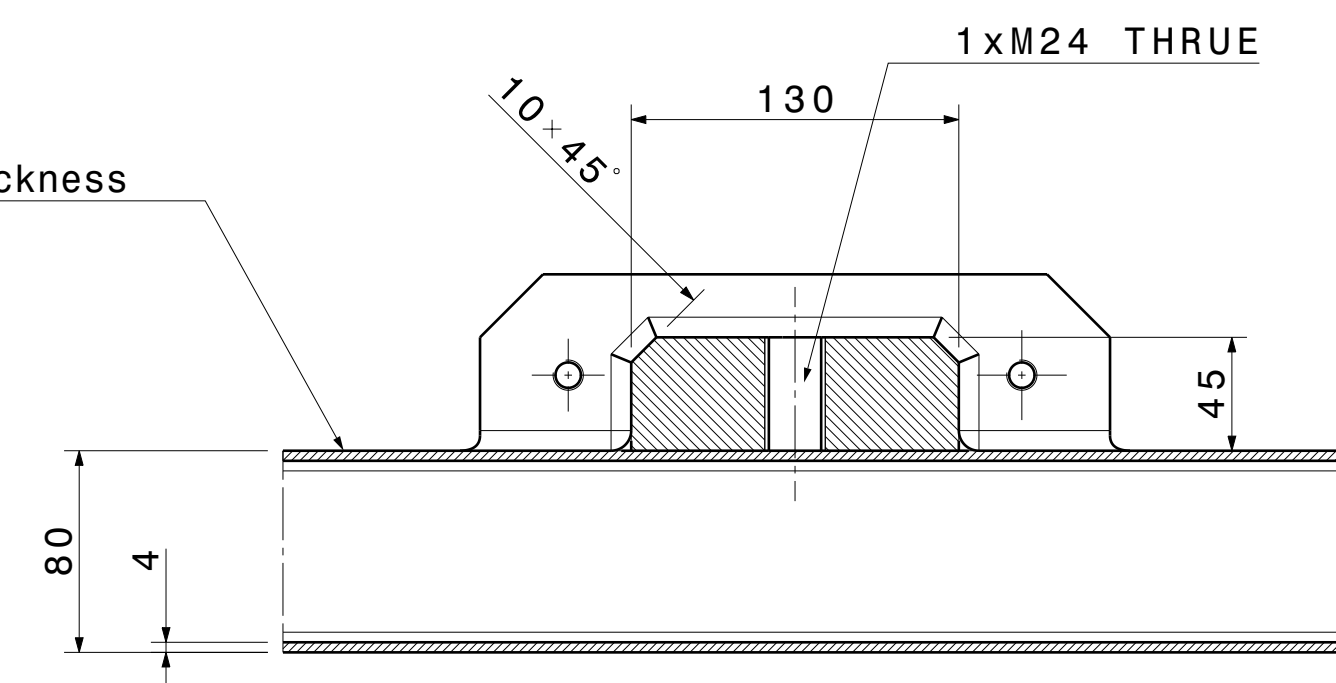


Bottom view
Scale: 1:5

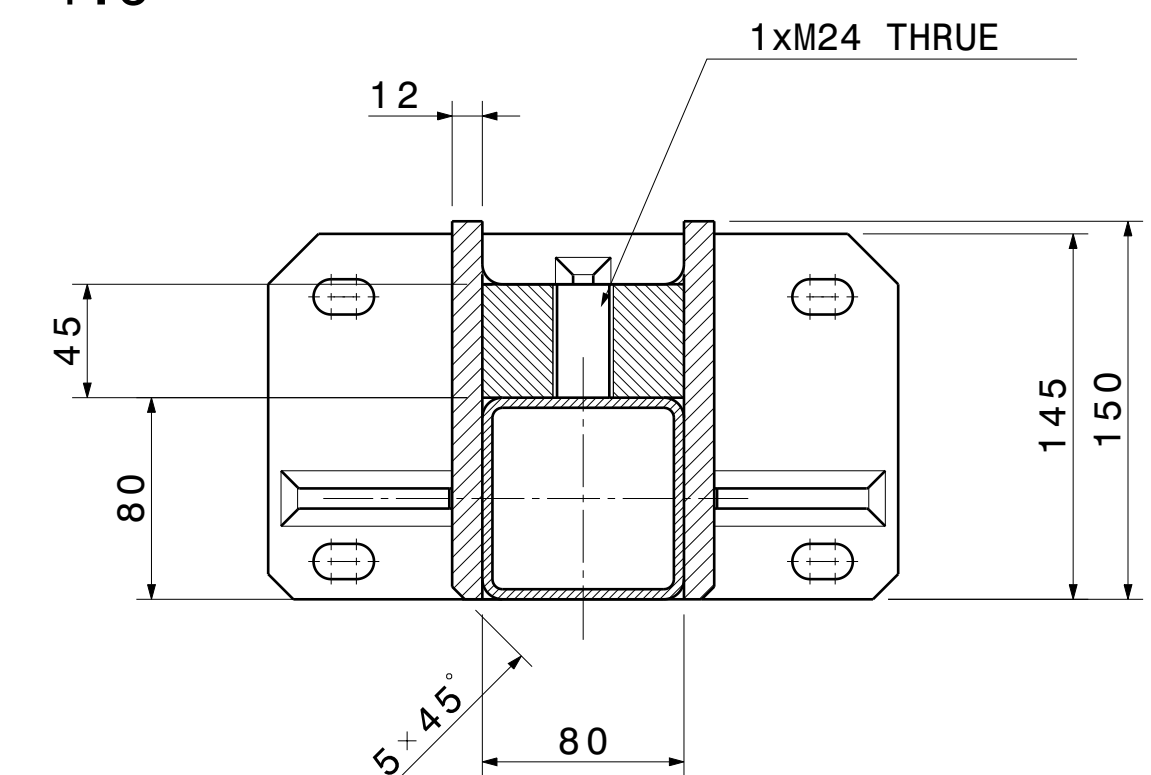


Auxiliary view T
Scale: 1:5

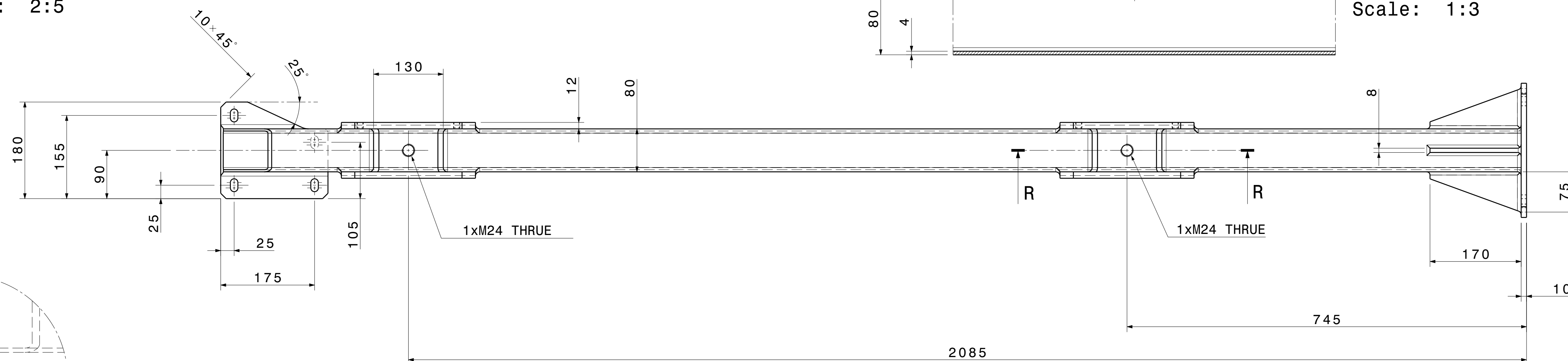
Square Shape 80x80mm-4mm Thickness



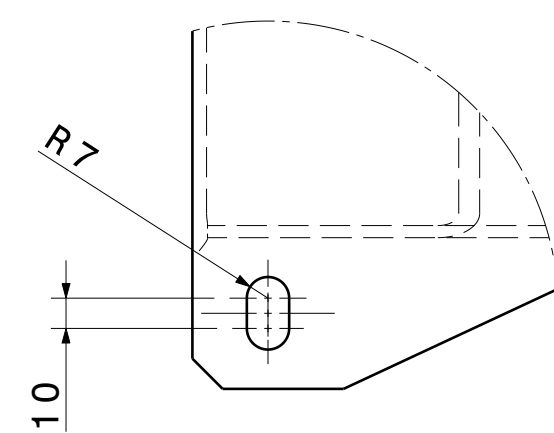
Section view R-R
Scale: 1:3



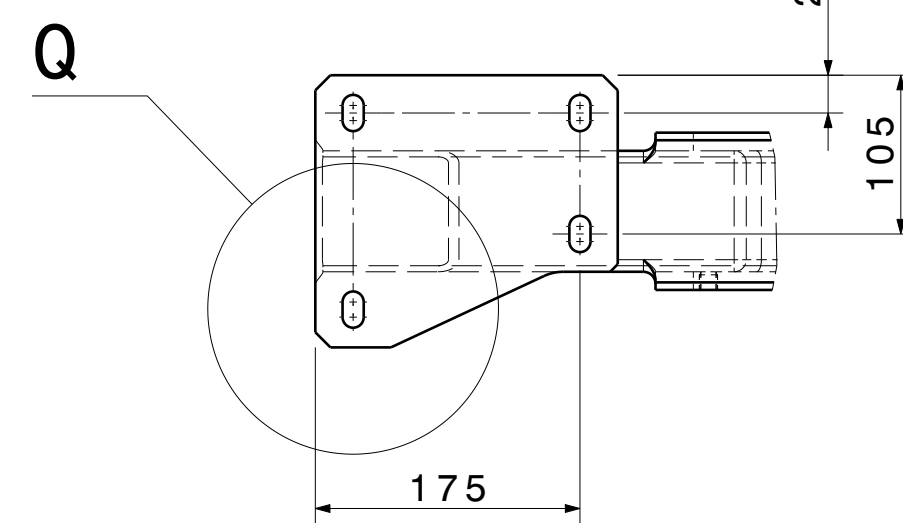
Section view S-S
Scale: 1:3



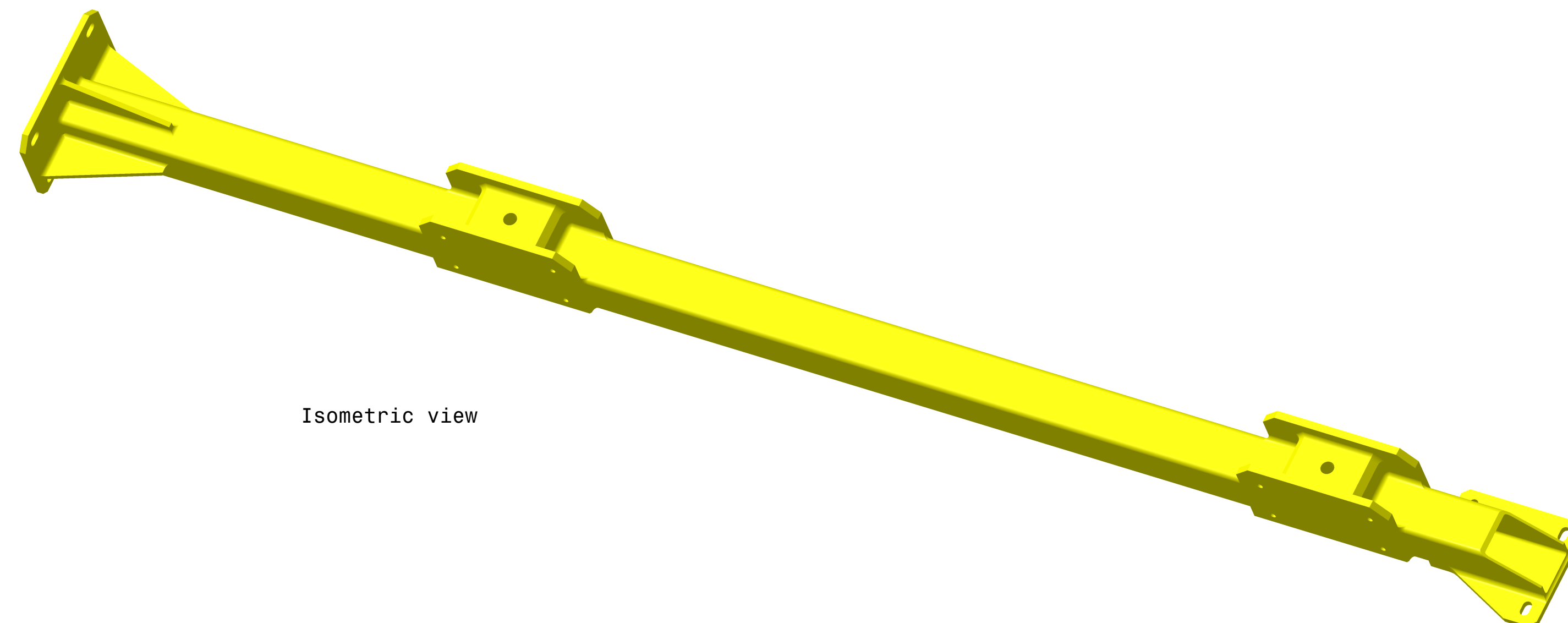
Front view
Scale: 1:5




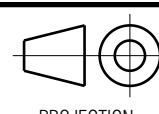
Detail Q
Scale: 2:5



Auxiliary View
Scale: 1:5



Isometric view

PART.N 3		/	ASTM A36		LATERAL CONNECTION BAR Left				50 Kg	Q.TY 1
General tolerance ISO 2768-mK-E			Geometrical tolerance ISO 8015-E				Roughness ISO 1302			
 <div>NATIONAL INSTITUTE FOR NUCLEAR PHYSICS FRASCATI NATIONAL LAB S.P.A.S</div>			SIZE A1		REVISION		DATE : .		NAME : .	
							DATE : .		NAME : .	
							DATE : .		NAME : .	
							DATE : .		NAME : .	
CLAS12- RICH RICH MODULE STIFFENING TOOL DETAIL: Lateral Connection Bar_LEFT					TOTAL WEIGHT (Kg)		DATE		DRAWN	
							20/01/2017		D.Orecchini	
					SCALE		DATE		CHECKED	
					See Drawing					
					1/1		DATE		APPROVED	
					RM_ST - 4/7					