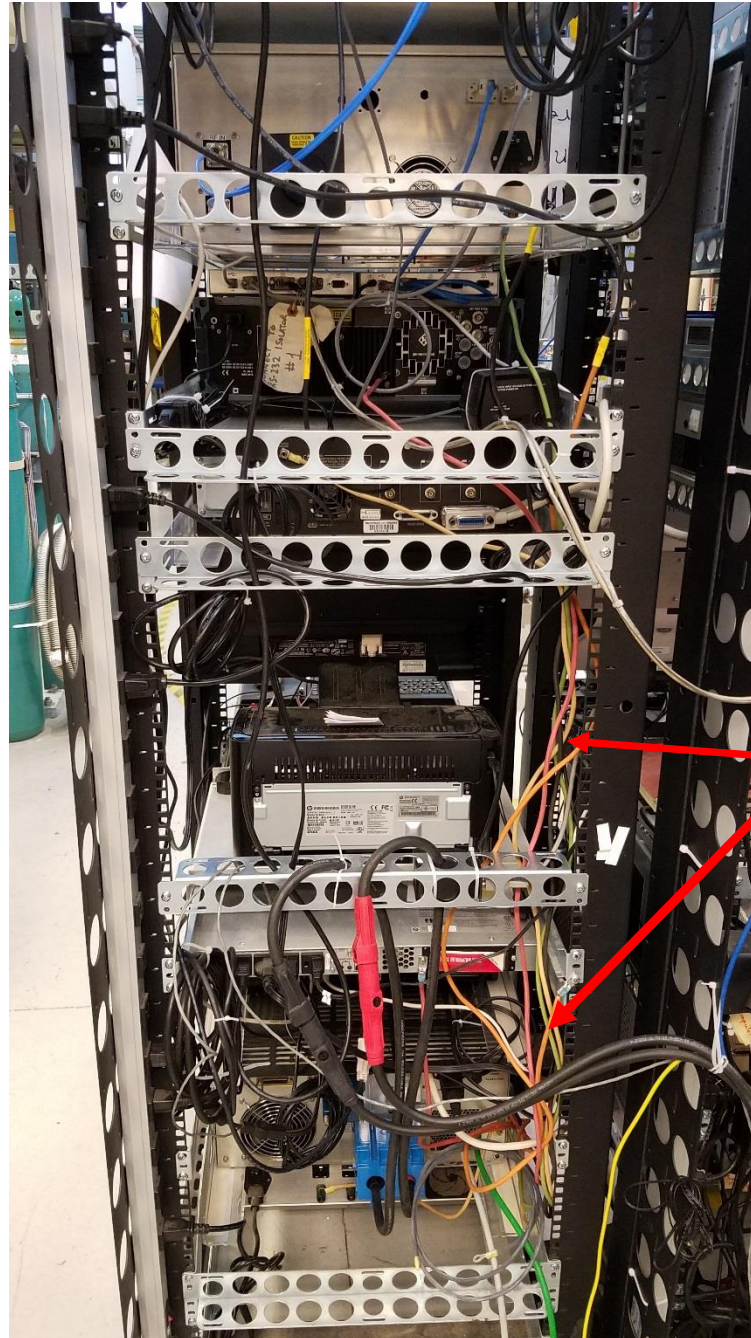


# HDice Rack #1 Grounding

Amanda Hoebel

# Rack #1

- Grounding cables on Rack #1 needed to be redone.
  - Some cables were frayed at the ends.
  - Some cables were not long enough, resulting in ground cables to be daisy-chained to other instrumentation.



Grounding cables

# Grounding: Before

- Grounding on Lock-in Amp and RF Box before fixing cables.



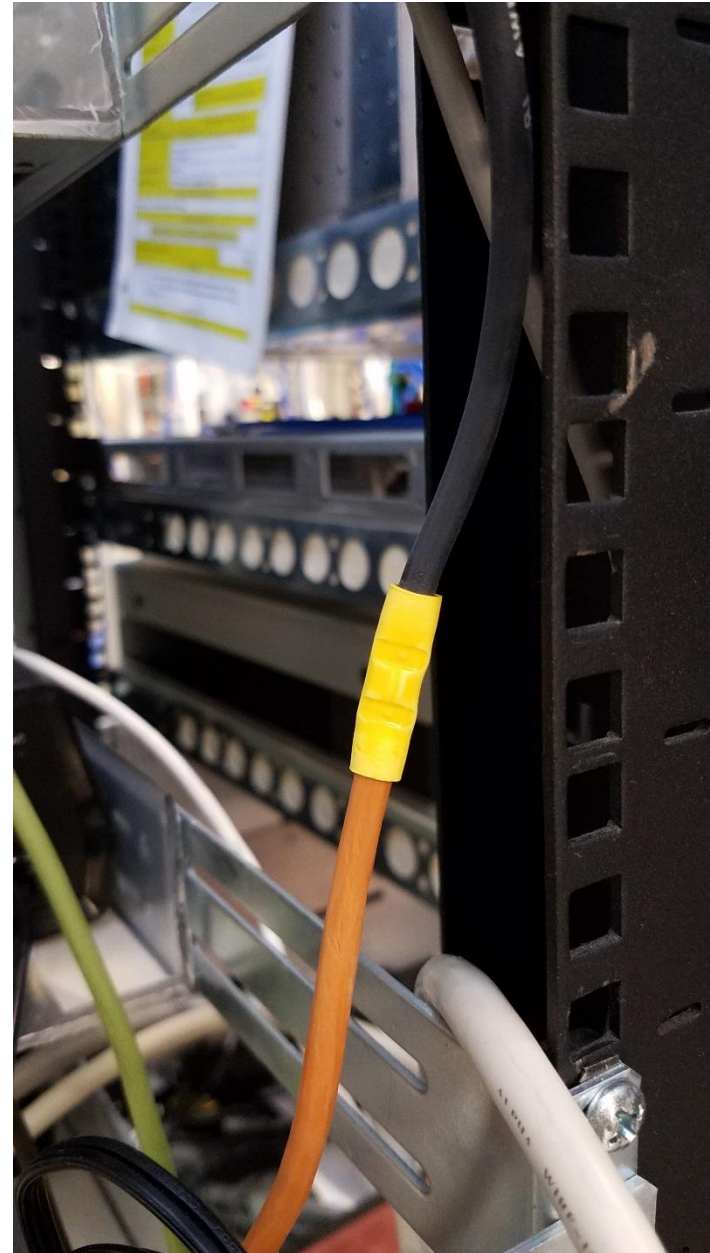
# Grounding: After

- Grounding on Lock-in Amp and RF Box after fixing cables.



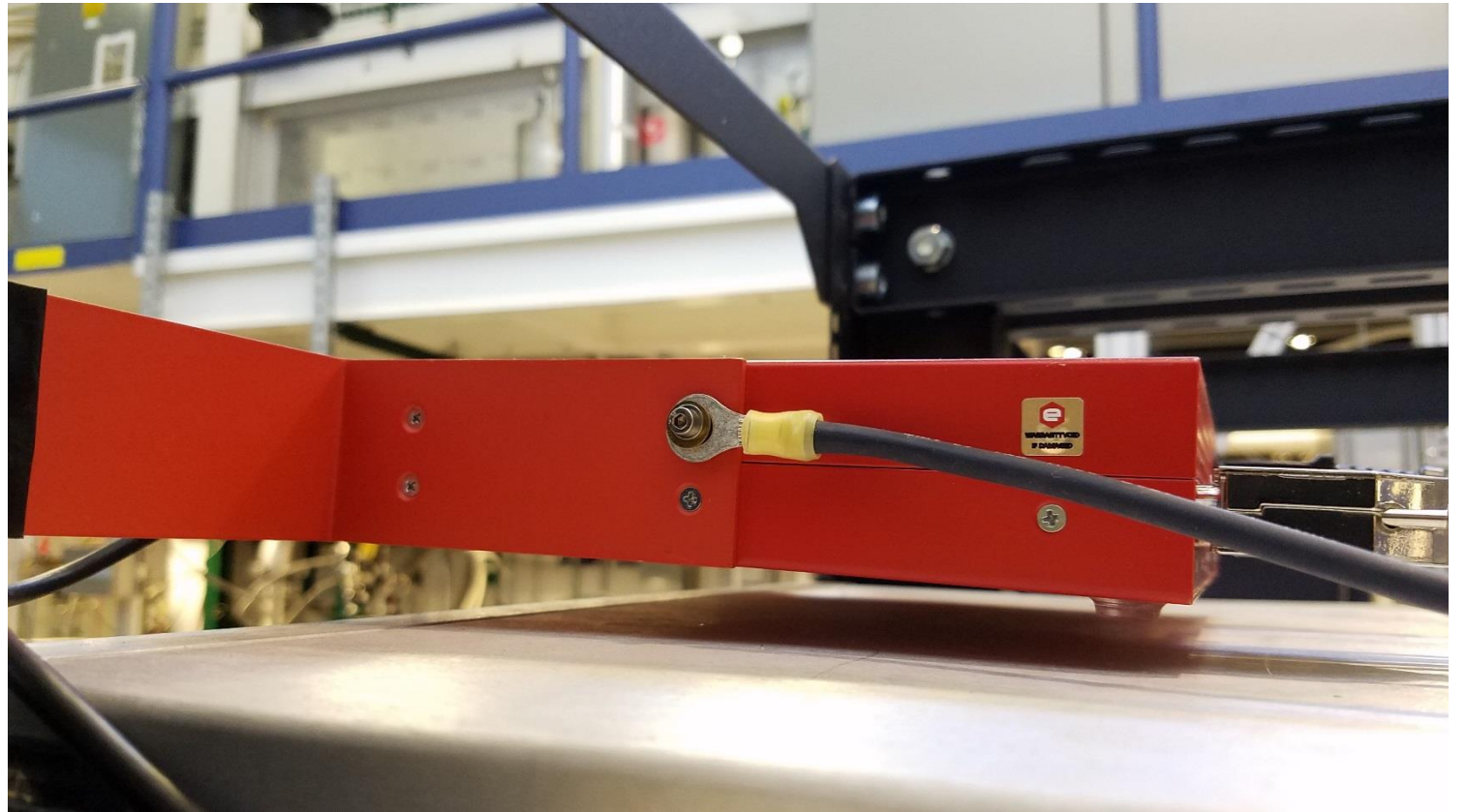
# Extended Cables

- Some cables were not long enough to reach instrumentation on top of rack.
  - Cables were extended to reach.



# CT-Box Grounding

- CT-Box had not been previously grounded.
  - Cable was added to ground instrument.



# Extra Cable

- Additional cable was fabricated to connect Rack #1 to Rack #2.
  - Cable requested to be detached from racks until needed.

