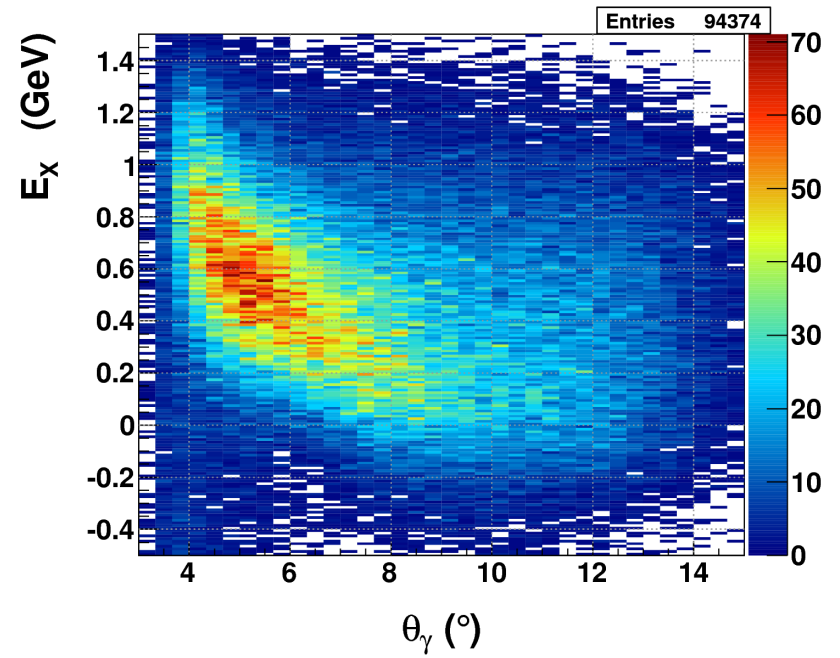
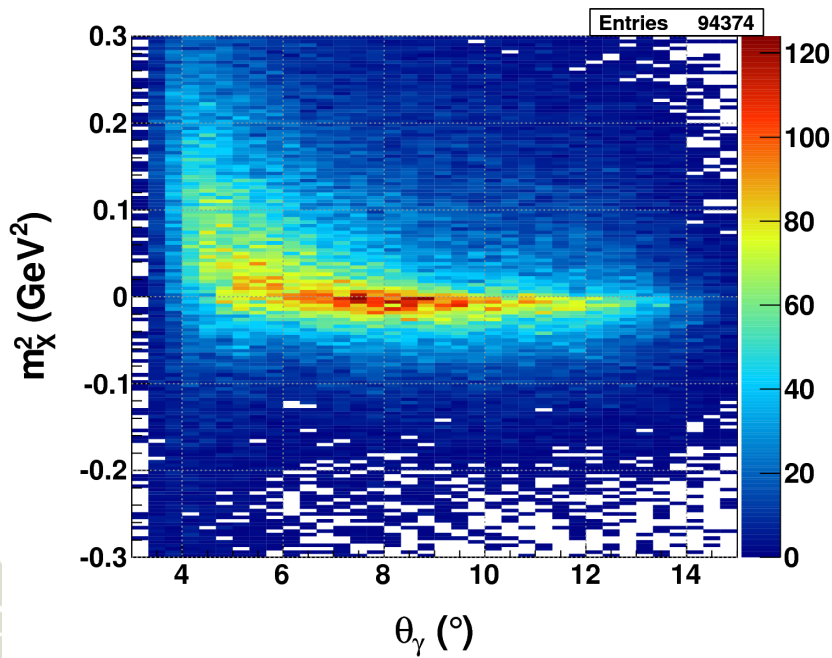
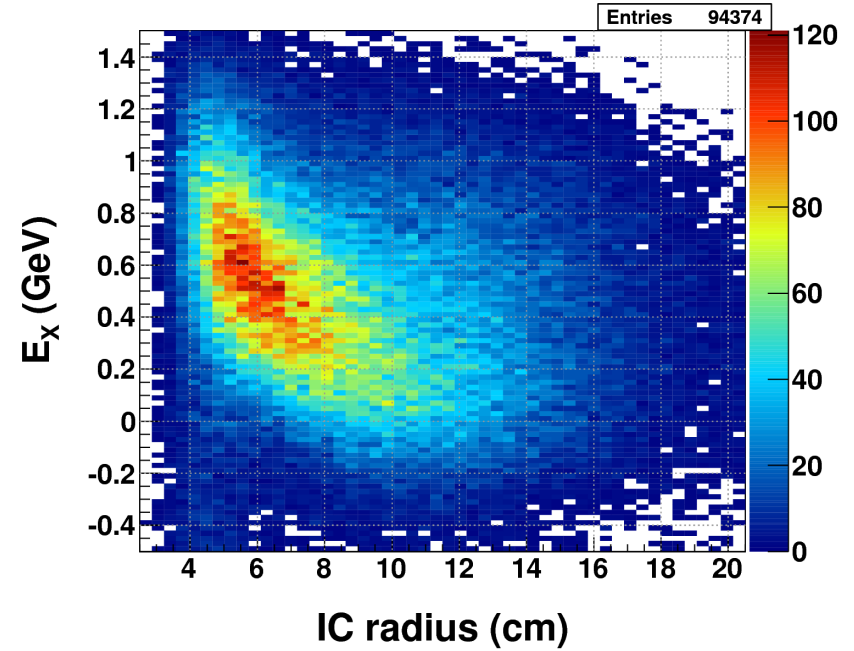
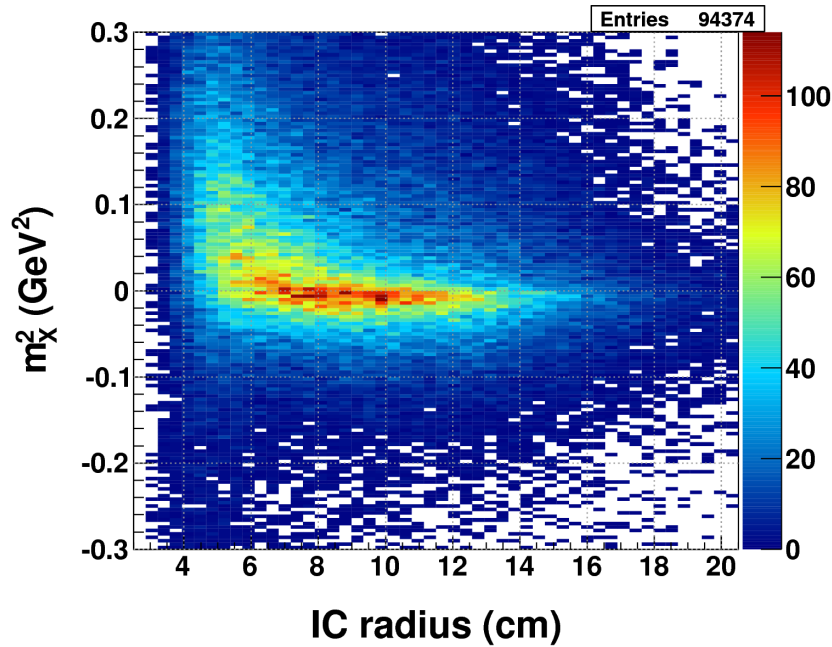
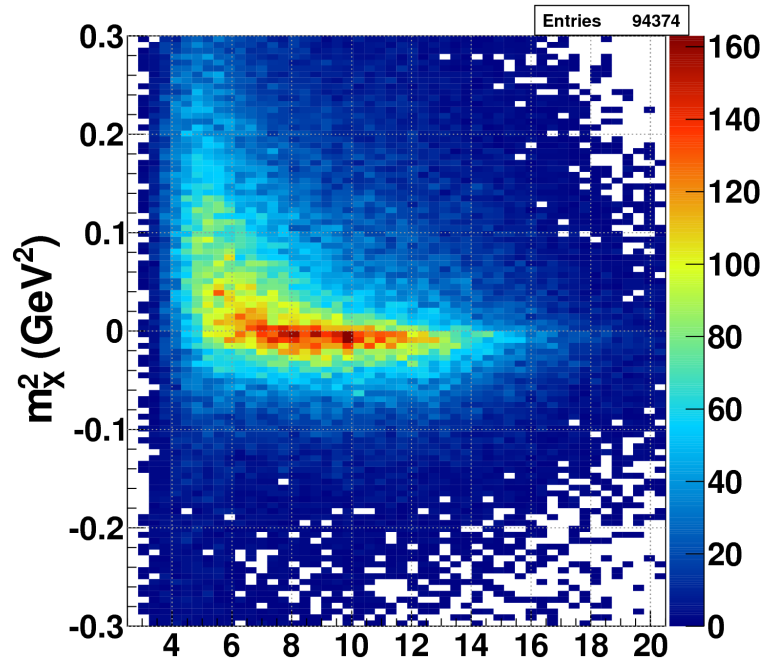


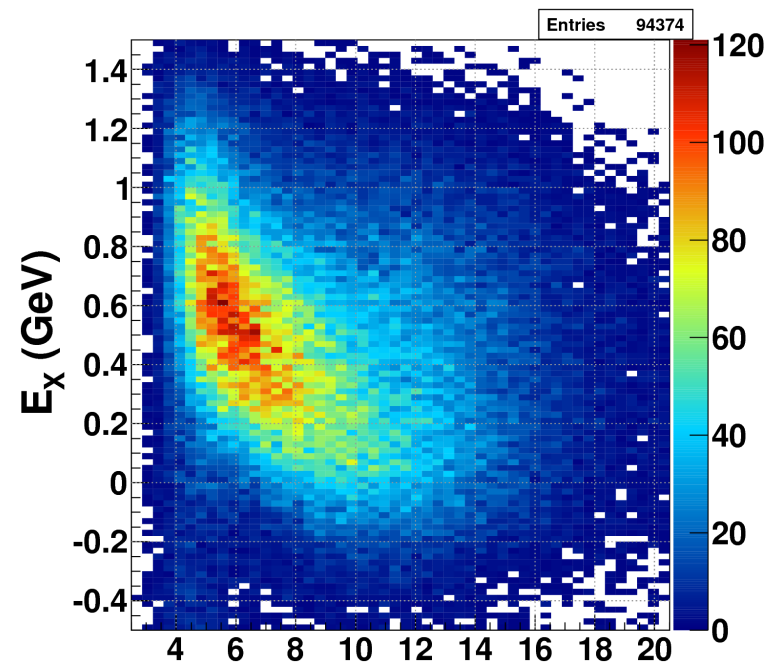
From the meeting: m_x^2 & Missing Energy vs IC Radius/ θ_γ



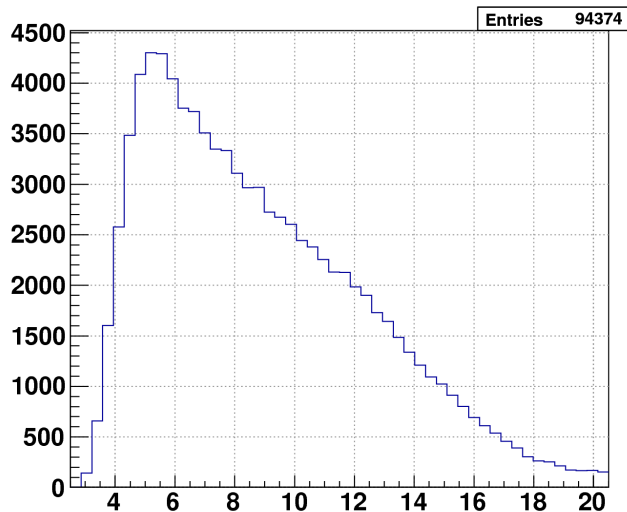
Projected for Stephan: m_x^2 & Missing Energy vs IC Radius Projected:



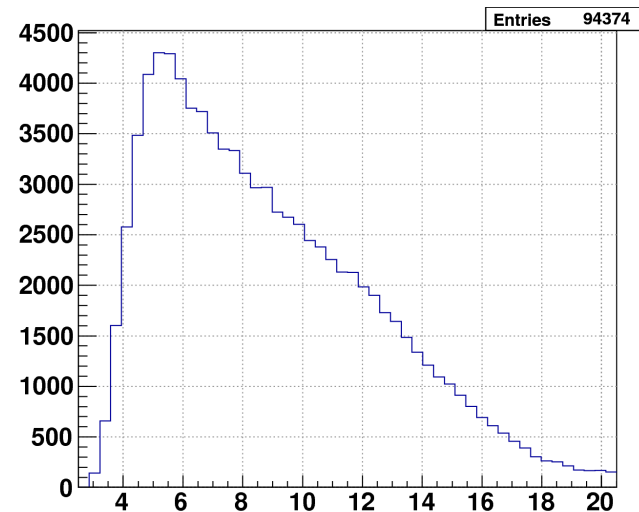
IC radius (cm)



IC radius (cm)



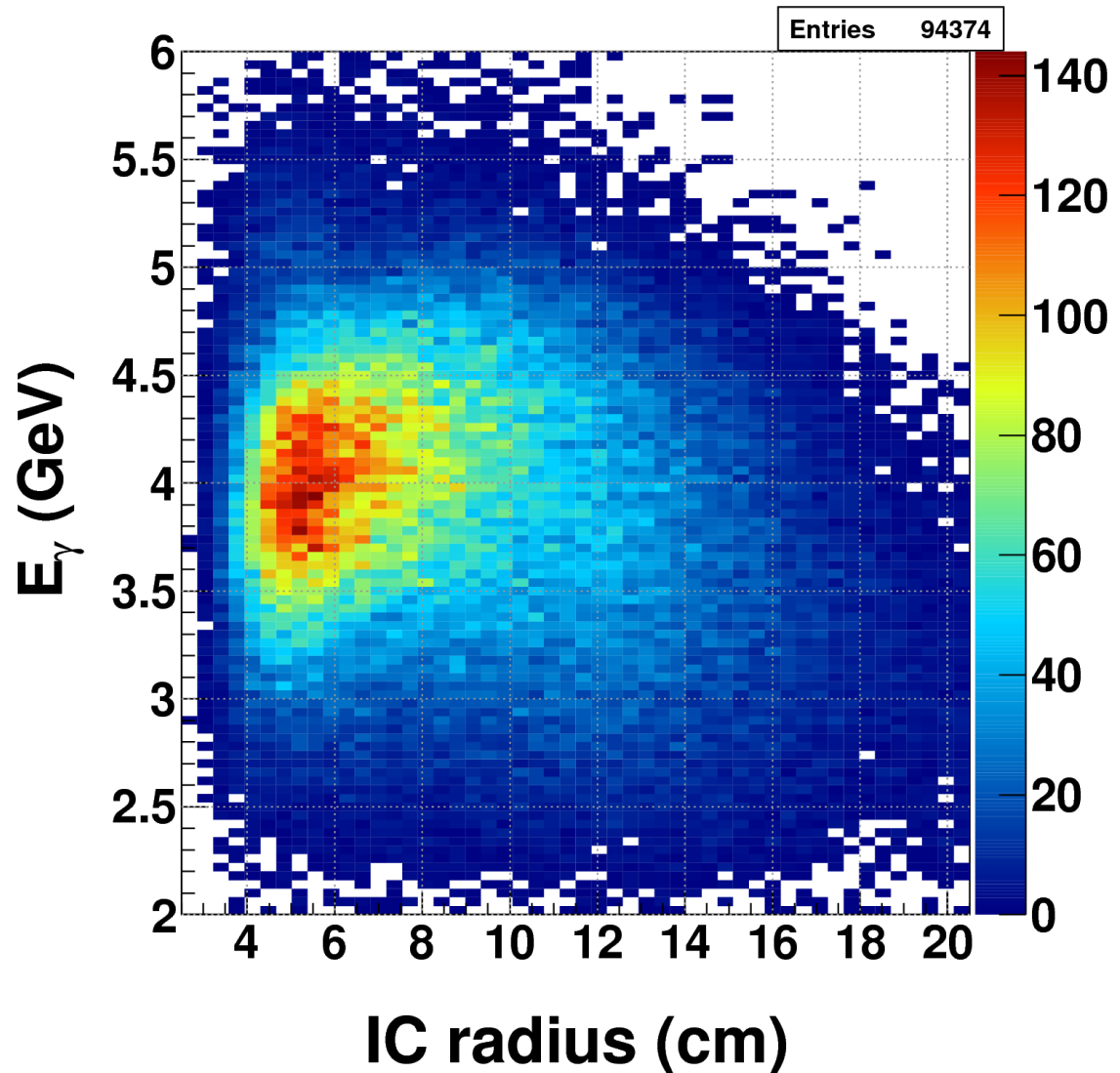
IC radius (cm)



IC radius (cm)

Energy of the Gamma vs IC Radius:

- Raphael,
Here is the correlation between γ energy and IC radius. I answered your question incorrectly - I meant that most of the higher energy γ 's are at smaller radius, but there is no correlation between the energy and the radius.



Missing Energy vs IC Radius:

FX,

There does appear to be any correlation with vertex position.

Inside RTPC after target holder

- Top: Full Target (-70, -54) cm
- Bottom Left: Upstream (-70, -65) cm
- Middle: Middle (-65, -60) cm
- Bottom Right: Downstream (-60, -54) cm

