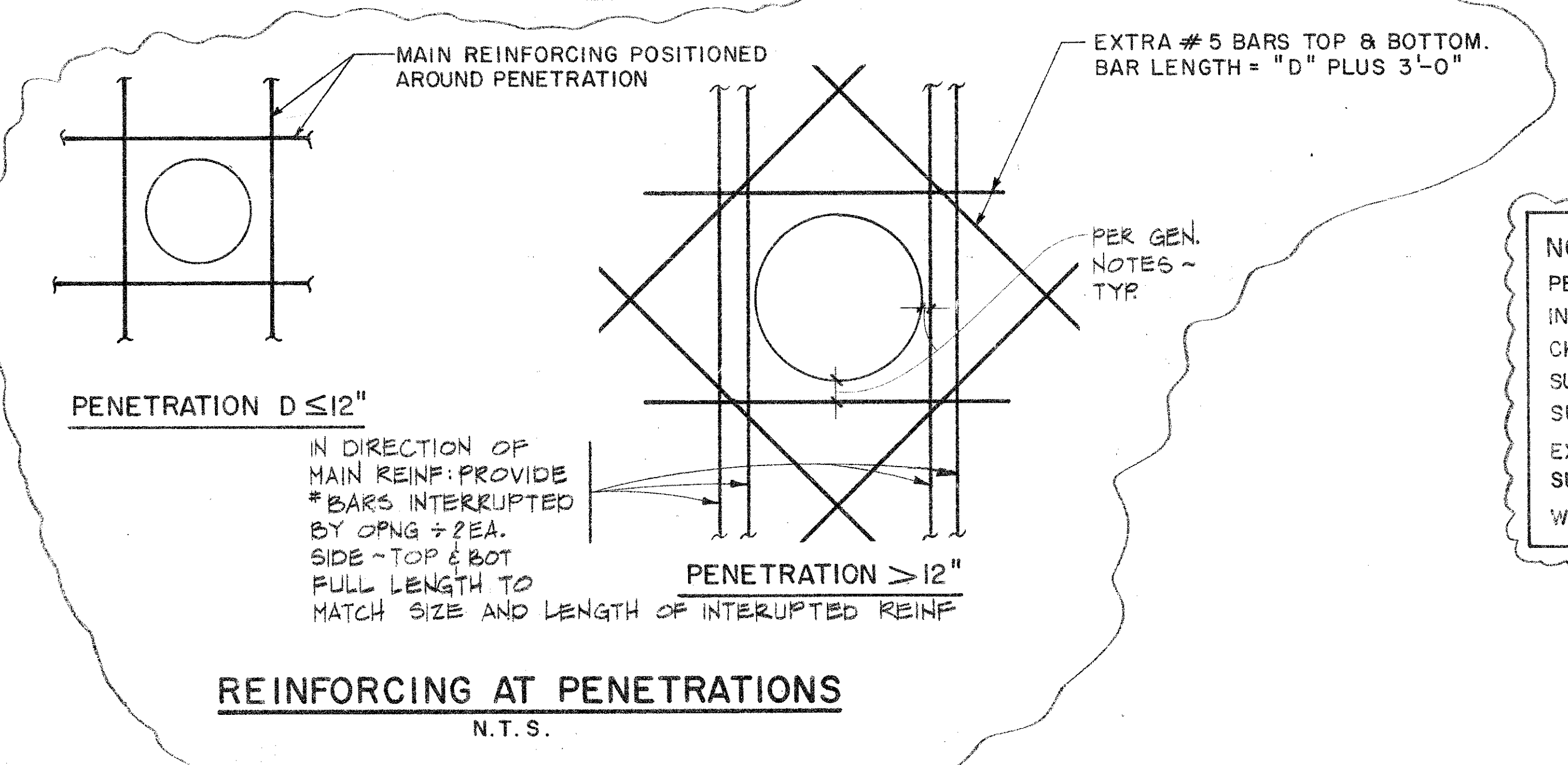
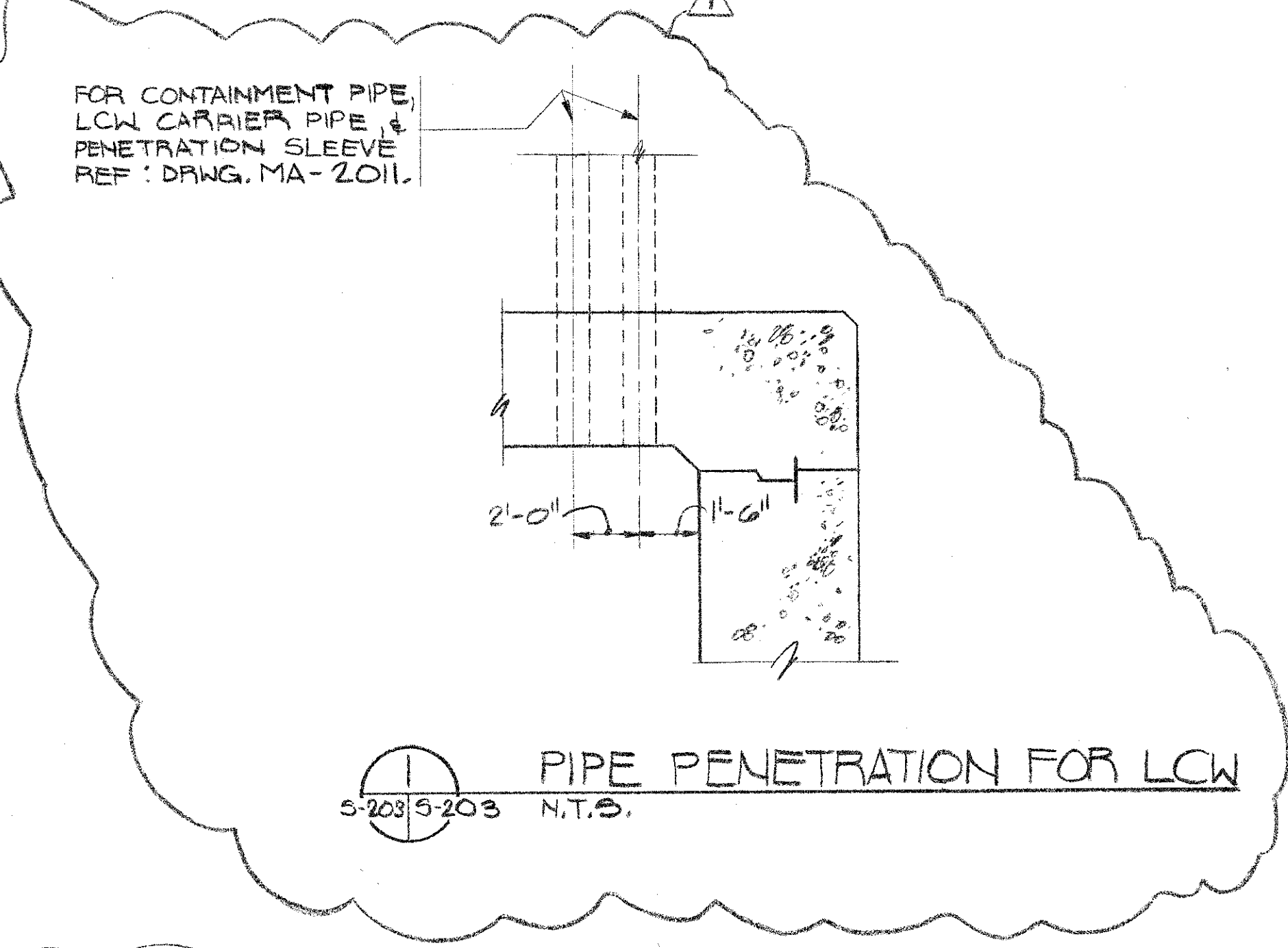
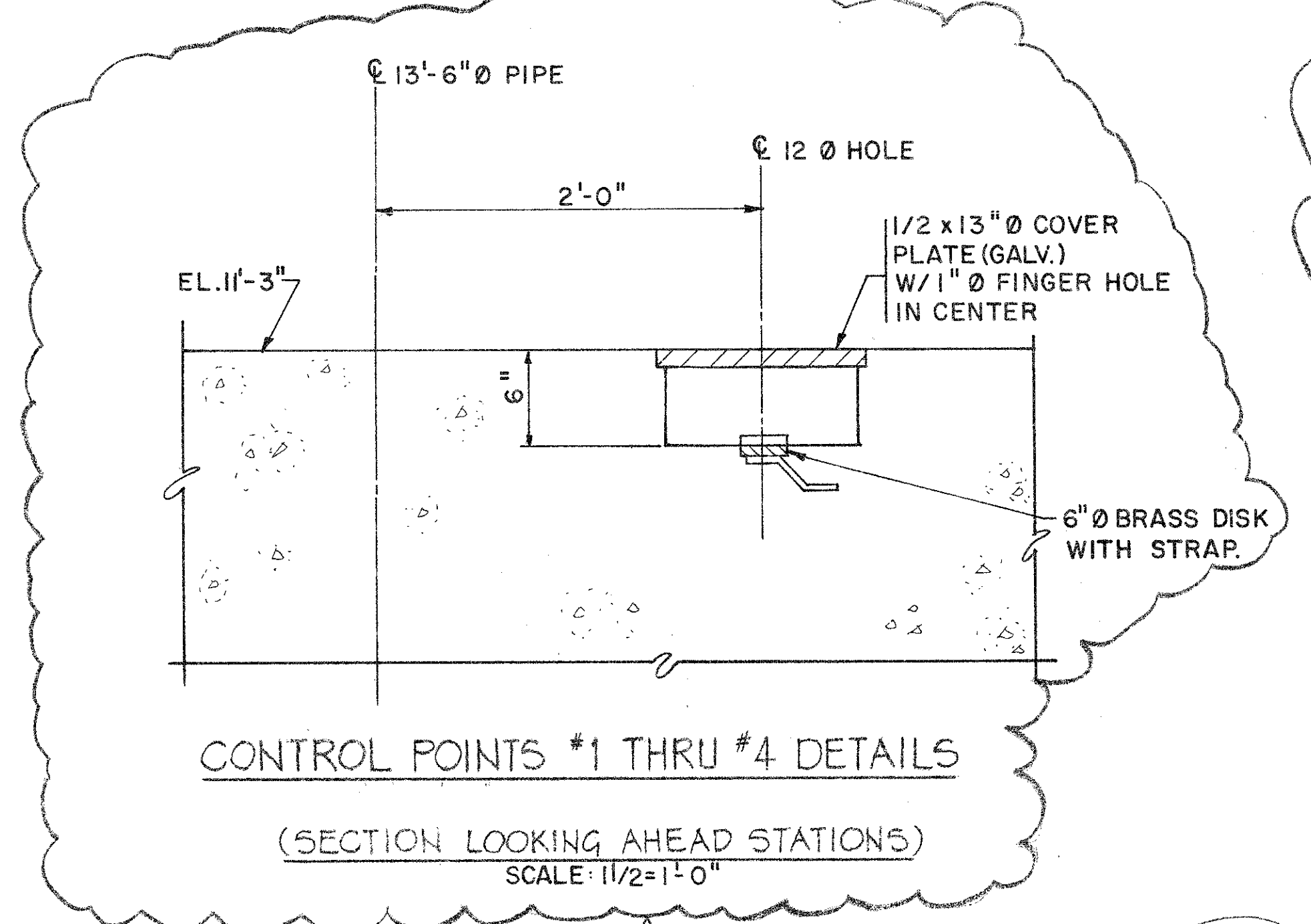


- NOTES:**
1. WORK THIS DRAWING WITH DRAWINGS S-212 AND S-213, CONDUIT PENETRATION SCHEDULE.
  2. STEEL CONDUIT PIPE SHALL BE ASTM A53 TYPE E OR S, GRADE B, WEIGHT CLASS STANDARD (STD). EXTERIOR SURFACE OF PIPE NOT EMBEDDED IN CONCRETE SHALL BE FIELD COATED WITH COAL TAR EPOXY APPLIED IN ACCORDANCE WITH THE MANUFACTURER'S RECOMMENDATIONS.
  3. PRIOR TO BACKFILLING AROUND CONDUITS, WRAP THE CONDUIT WITH 6 MIL POLYETHYLENE SHEET TO PREVENT BACKFILL FROM ADHERING TO THE CONDUIT.
  4. SECTIONS ON THIS DRAWING SHOWING CONDUIT PENETRATION ARE SCHEMATIC. CONDUITS SHOWN IN ANY SECTION DO NOT ALL OCCUR AT THE SAME LOCATION (STATION).
  5. SUPPORT AND PROTECT ALL CONDUIT IN THE CORRECT POSITION DURING BACKFILLING.
  6. PLACE BACKFILL ON THE SIDES OF THE BEAM ENCLOSURE IN EVEN LIFTS, SUCH THAT THE HEIGHT OF BACKFILL ON ONE SIDE OF THE ENCLOSURE IS NOT MORE THAN 2 FEET HIGHER THAN ON THE OTHER SIDE.
  7. THIS DWG. SHOWS PENETRATION DETAILS. FOR REINFORCING, SEE DWG. S-210.

**A TYP. @ LINAC**  
 5-202/5-203 (N.T.S.)

**B TYP. @ ARC**  
 5-202/5-203 (N.T.S.)

**C TYP. @ INJECTOR**  
 5-202/5-203 (N.T.S.)



**NOTE:**  
 PENETRATION LOCATIONS ARE BASED ON THE BEST INFORMATION AVAILABLE AT THE TIME, AND MAY BE CHANGED BY THE SUBCONTRACTING OFFICER. SUBCONTRACTOR SHALL NOTIFY THE SUBCONTRACTING OFFICER TWO WEEKS BEFORE EXACT PENETRATION LOCATIONS ARE REQUIRED. SUBCONTRACTING OFFICER WILL PROVIDE LOCATIONS WITHIN TWO WEEKS OF SAID REQUEST.

|       |                |            |
|-------|----------------|------------|
| REV 2 | AS-BUILT       | 11/15/01   |
| REV 1 | AMENDMENT #1   | 6-7-98     |
| 0     | ISSUE FOR BIDS | 4/15/00    |
| REV   | DESCRIPTION    | DMJM CEBAF |

**SURA** Southeastern Universities Research Association, Inc.  
 12070 Jefferson Avenue  
 Newport News, Virginia 23606

**CONTINUOUS ELECTRON BEAM ACCELERATOR FACILITY**  
 NEWPORT NEWS VIRGINIA

**DANIEL, MANN, JOHNSON & MENDENHALL**  
 1709 NEW YORK AVENUE N.W.  
 WASHINGTON D.C. 20006

SUBMITTED-DMJM RECOMM - CEBAF APPROVED - SURA

FACILITY  
**ACCELERATOR FACILITY**

DRAWING  
**BEAM ENCLOSURE SECTIONS AND DETAILS**

SCALE AS NOTED  
 DWG. NO. 88-S-8-0366-096

**S-203**

