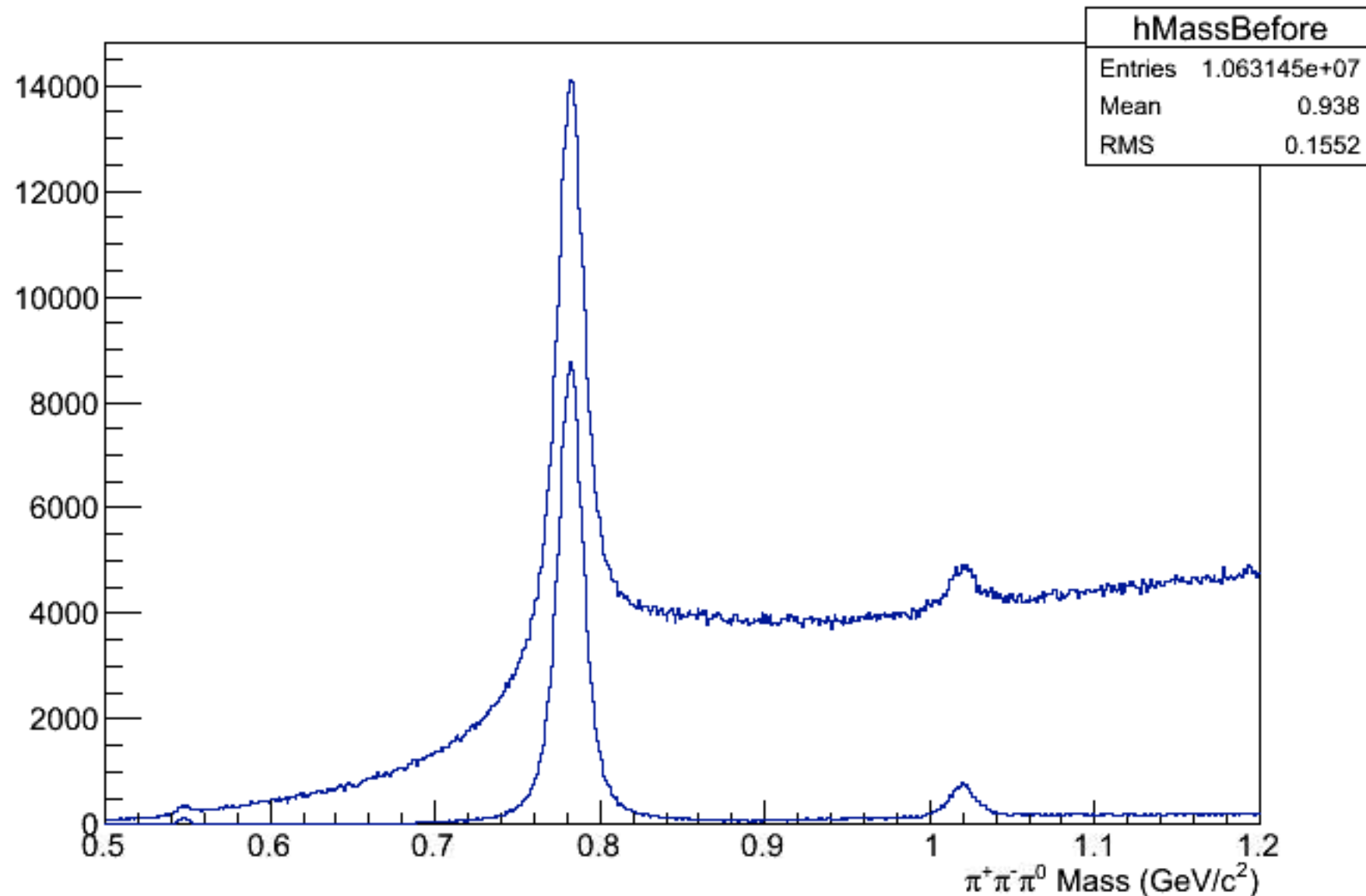
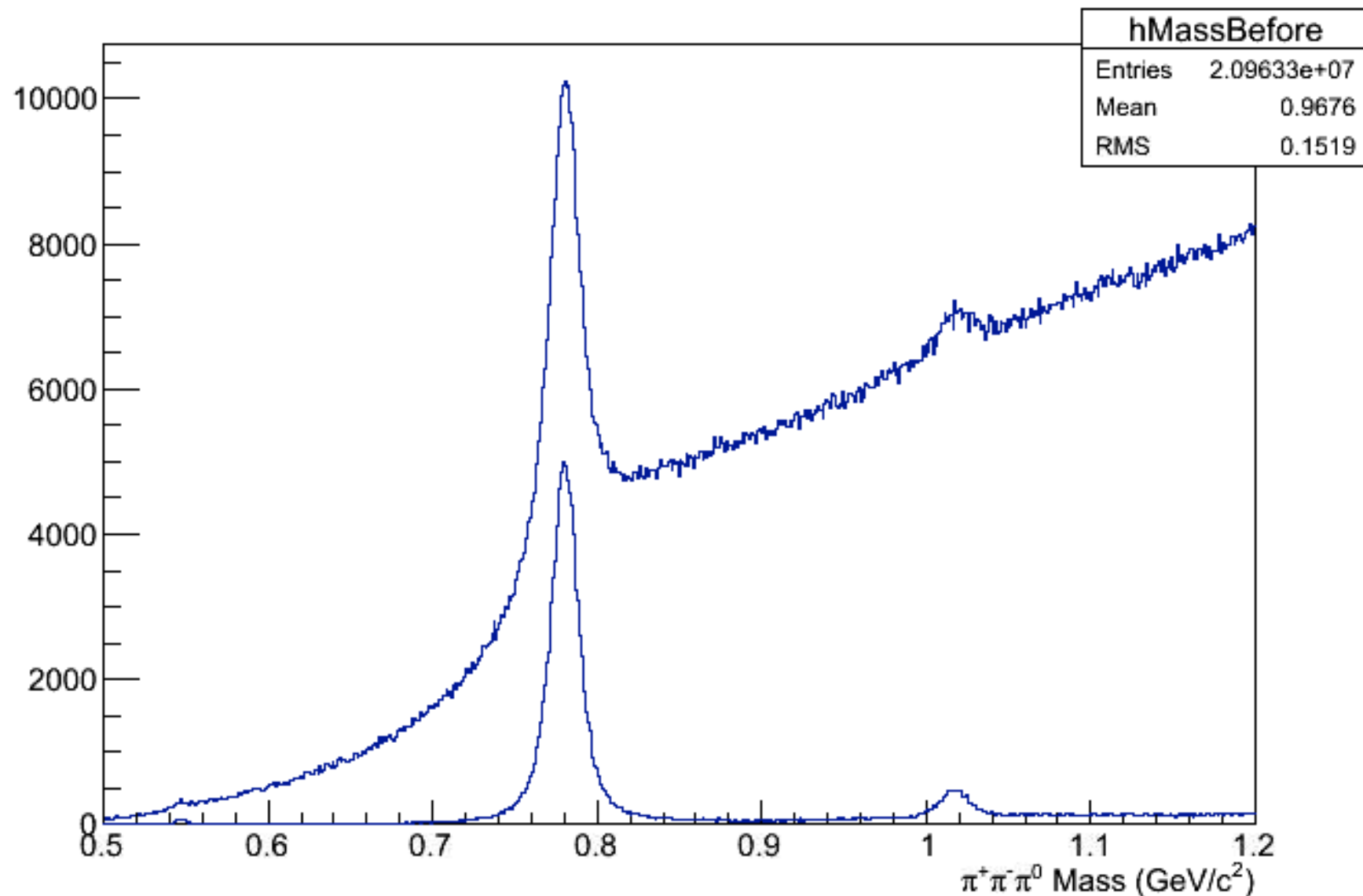


# $\gamma p \rightarrow p \pi^+ \pi^- \pi^0$ : DC1 results



- Plots are before and after a KinFit CL > 0.01 cut
- $8.4 < E_\gamma < 9$  GeV
- No electromagnetic background

# $\gamma p \rightarrow p \pi^+ \pi^- \pi^0$ : DC2 results



- Plots are before and after a KinFit CL > 0.01 cut
- $7 < E_\gamma < 12$  GeV
- EM background for  $1 \times 10^7$  ( $\pm 800$  ns), ie. run 9001