

Run Coordinator Weekly Summary

Entry Date: 02/22/2017
Hall: Hall_D
Run Coordinator: Alexander Ostrovidov
Experiment Number: GlueX E12-06-102

Preceding Week (Tuesday owl shift through Monday swing shift)

	Number of Hours	% of Scheduled
Scheduled Program	146	N/A
CW Beam on Target	115.1	78.8%
Acceptable Beam in Use (ABU)	100.1	68.6%

Major Causes of Down/Lost Time in the Hall:

# of Hours	Cause
9	Radiator changes
3	DAQ restarts
1.5	Harp scans
0.5	Slow_control_issues

Down/Lost Time causes listed above represent 93% of total lost time in the hall.

Percentage of total experiment data collected to date: 41.7%

Percentage of total scheduled experiment hours to date: 42.3%

Special Task Results:

Tested high-intensity 50kHz run. Worked on trigger and DAQ optimization. A few short TRD (transient radiation detector) test runs. Empty target run. Harp scans.

Upcoming Week

Program for the Upcoming Week:

Continue with production runs (100nA on diamond and 150nA on amorphous radiators). Attempt to run at 150nA on diamond radiators. Reduce frequency of radiator changes.

Planned Special Task:

Harp scans once every 2 days. Adjust detector settings for higher intensity running.

Special Requests:

Keep an eye on beam divergence in Y

Significant Problems Pending:

none

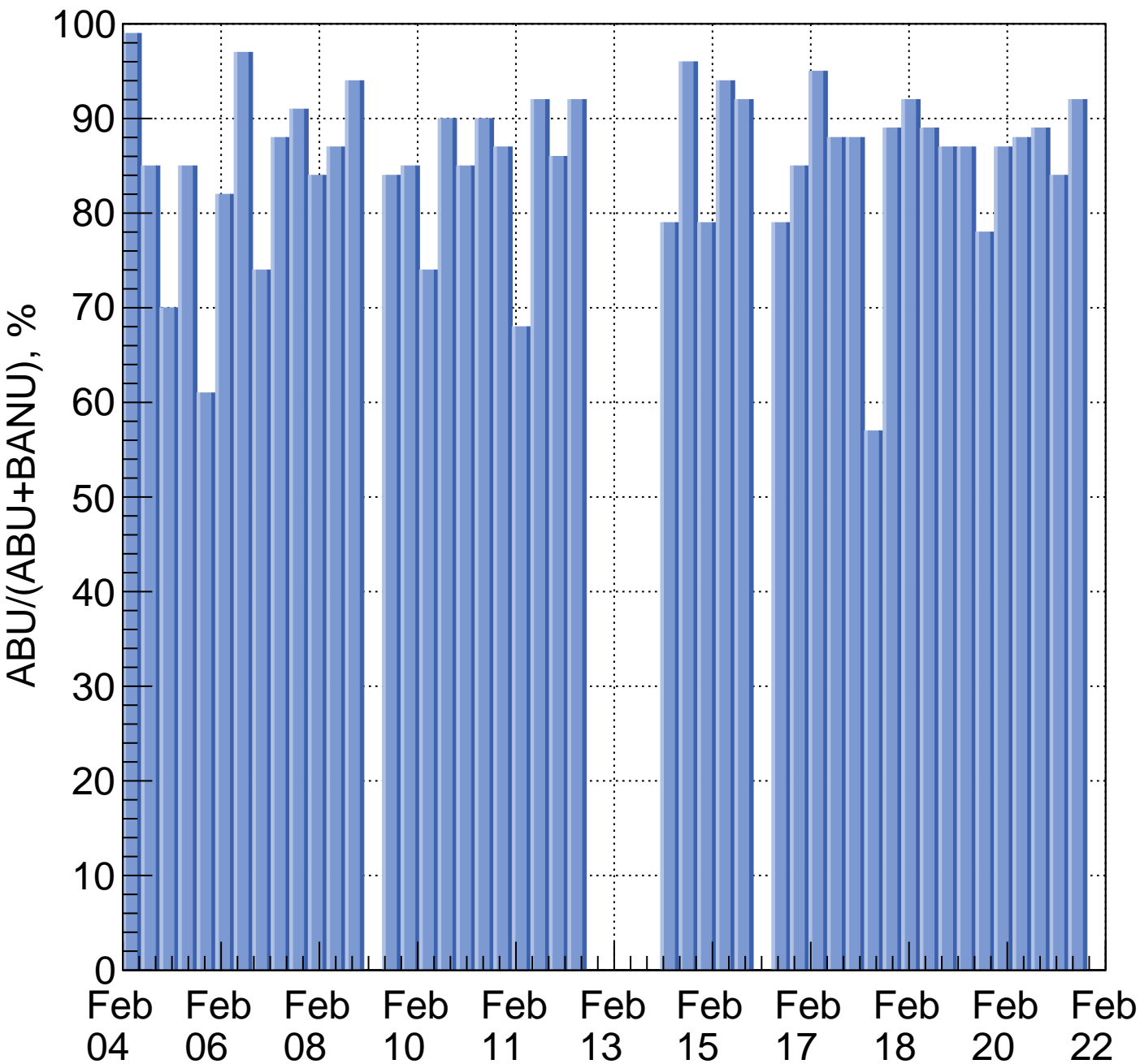
General Comments/Concerns

Beam Quality Issues:

Beam was excellent most of the time. Thanks to the accelerator crew for a very stable beam during this week!

Other:

Usage of beam time, $ABU/(ABU+BANU)$



Physics events (in billions) collected in Spring'17 run

