

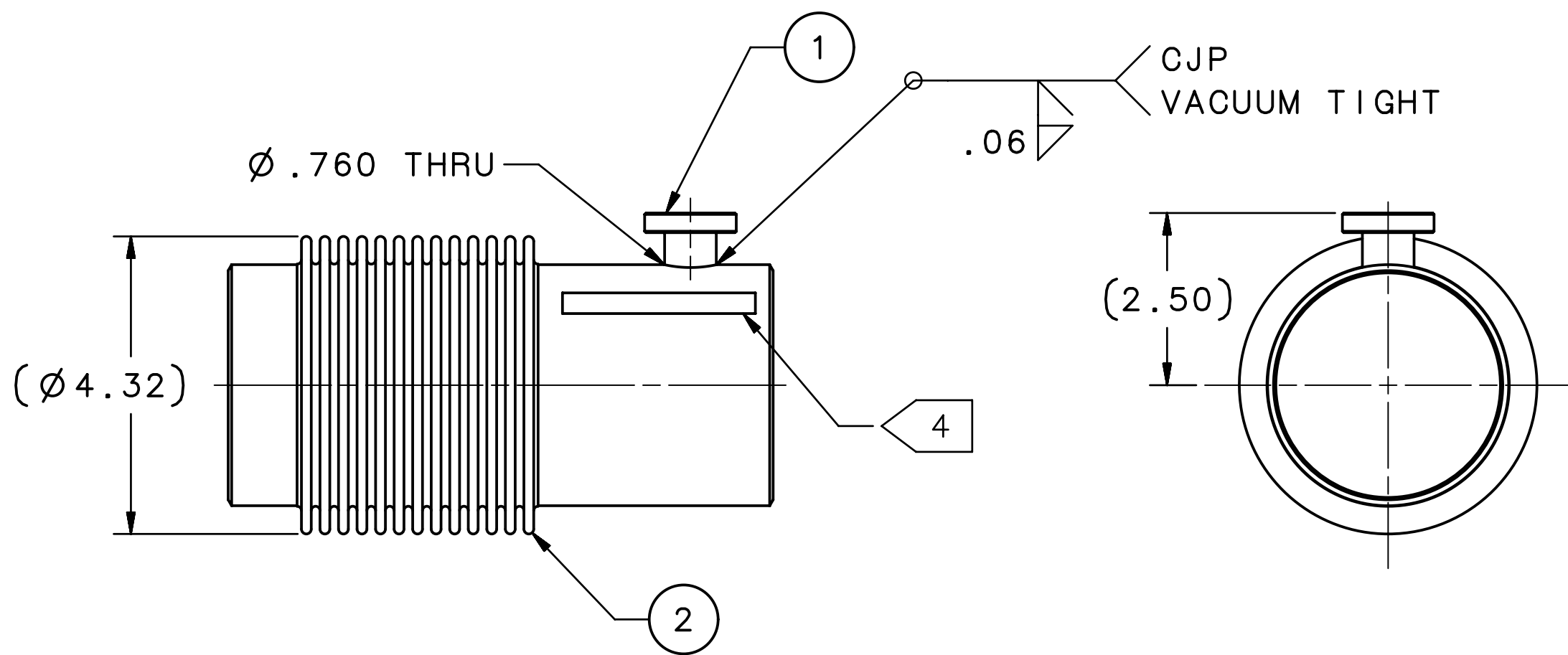
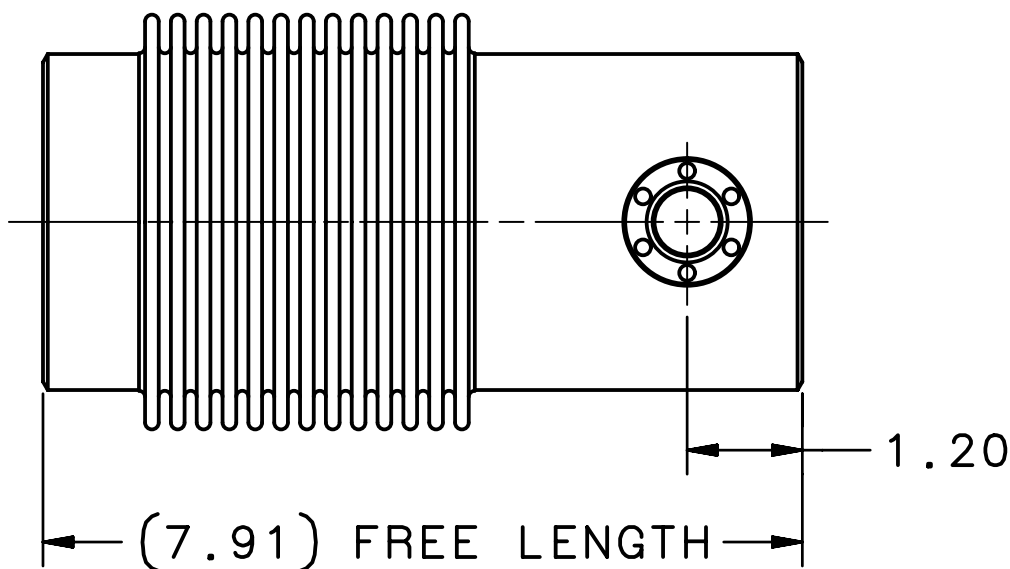
4

3

2

1

REVISION HISTORY			
ZONE	REV	DESCRIPTION	DATE/REVISER



NOTES:

- CLEAN AND HANDLE STAINLESS STEEL PER JLAB SPECIFICATION: 11141-S-0034
- THE ASSEMBLY MUST BE LEAK TESTED IN ACCORDANCE WITH JLAB SPECIFICATION: 11141-S-0029 NO DETECTABLE LEAK GREATER THAN 2×10^{-10} STD CC OF HE/SEC
- PROTECT FLANGE FACES DURING AND AFTER PROCESSING WITH SUITABLE PLASTIC CAPS. DAMAGE TO KNIFE EDGES IS UNACCEPTABLE.
- DRAWING NUMBER (104211500-A017---) TO BE ETCHED OR ENGRAVED IN APPROXIMATE LOCATION USING MINIMUM .25 HIGH CHARACTERS.
- BUILD IN ACCORDANCE WITH ASME B31.3
FLUID SERVICE: NORMAL
DESIGN TEMPERATURE: 2-300K
DESIGN PRESSURE: 4 ATM DIFFERENTIAL
VENDOR SHALL SUBMIT INSPECTION AND TEST REPORTS.

1	2	104211500-M8U-8200-A026	CON BELLOWS 3.50 ID X 7.91 LG W/WELD PREP		
1	1	104211500-M8U-8200-A025	1.33 HALF NIPPLE TAPPED MOD		
QTY REQD	ITEM NO.	PART OR IDENTIFYING NO.	NOMENCLATURE OR DESCRIPTION	MATERIAL SPECIFICATION	NOTES
PARTS LIST					
FOR JLAB INTERNAL USE ONLY			MATERIAL		
SEE ES&H MANUAL CHAPTER 6151 FOR PRESSURE AND VACUUM SYSTEMS SAFETY SUPPLEMENT AND WELDING AND BRAZING SUPPLEMENT			SEE PARTS LIST		
WELD CLASS			THIRD ANGLE PROJECTION		
PRESSURE/VACUUM CLASS			FINISH 125 UNLESS MACHINED SURFACES OTHERWISE NOTED DEBURR & BREAK ALL SHARP EDGES		
ASME B31.3			DO NOT SCALE DRAWING		
PRESSURE SYSTEMS NUMBER			DRAWN J. HOERGER		
PS-CRM-18-001			DATE 10JUL19		
			United States Department of Energy		
			Jefferson Lab Ottomans Jefferson National Accelerator Facility		
			Newport News Virginia		
			CRM SPALLATION NEUTRON SOURCE - PPU CAVITY STRING He OUTLET BELLOWS		
			SIZE DWG. NO.		
			C 104211500-M8U-8200-A017		
			SCALE 1:2 USED ON ASSY NO. 104211500-M8U-8200-A002 SHEET 1 OF 1		