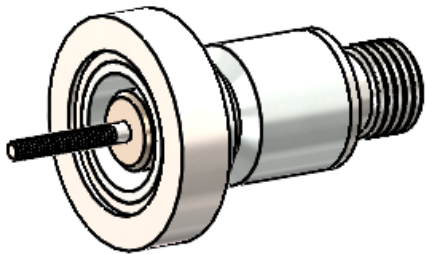


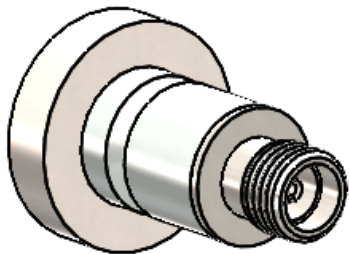
4				3		2			Q464641 SALES		SHEET 1 OF 1	
#	ITEM	MATERIAL	QTY	<div>NOTES: 1- ASSEMBLY TO BE LEAK TIGHT TO 1X10E-9 ATM cc/sec HELIUM. 2- ASSEMBLIES TO BE CLEANED FOR VACUUM SERVICE.</div>				REV.	REVISION DESCRIPTION	APP'D	DATE	
1	INSULATOR	90% MIN. ALUMINA	1					A	INITIAL RELEASE	OB	8/15/2024	
2	CAP	52% NiFe	1									
3	STUD	304 STN STL	1									
4	SLEEVE	52% NiFe	1									
5	SOCKET	17-7 PH STN STL	1									
6	CONDUCTOR	304 STN STL	1									
7	PROBE COLLAR	316L STN STL	1									

NOTES:
1- ASSEMBLY TO BE LEAK TIGHT TO 1X10E-9 ATM cc/sec HELIUM.
2- ASSEMBLIES TO BE CLEANED FOR VACUUM SERVICE.

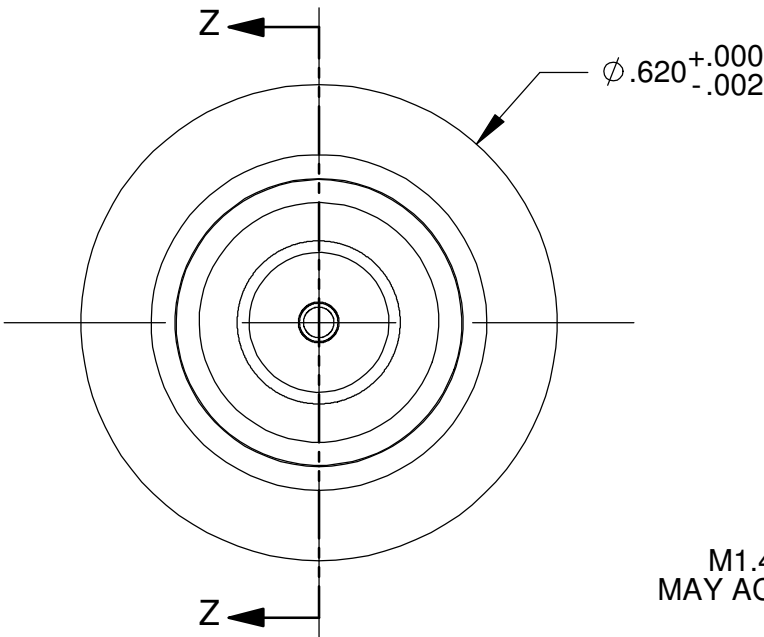
B



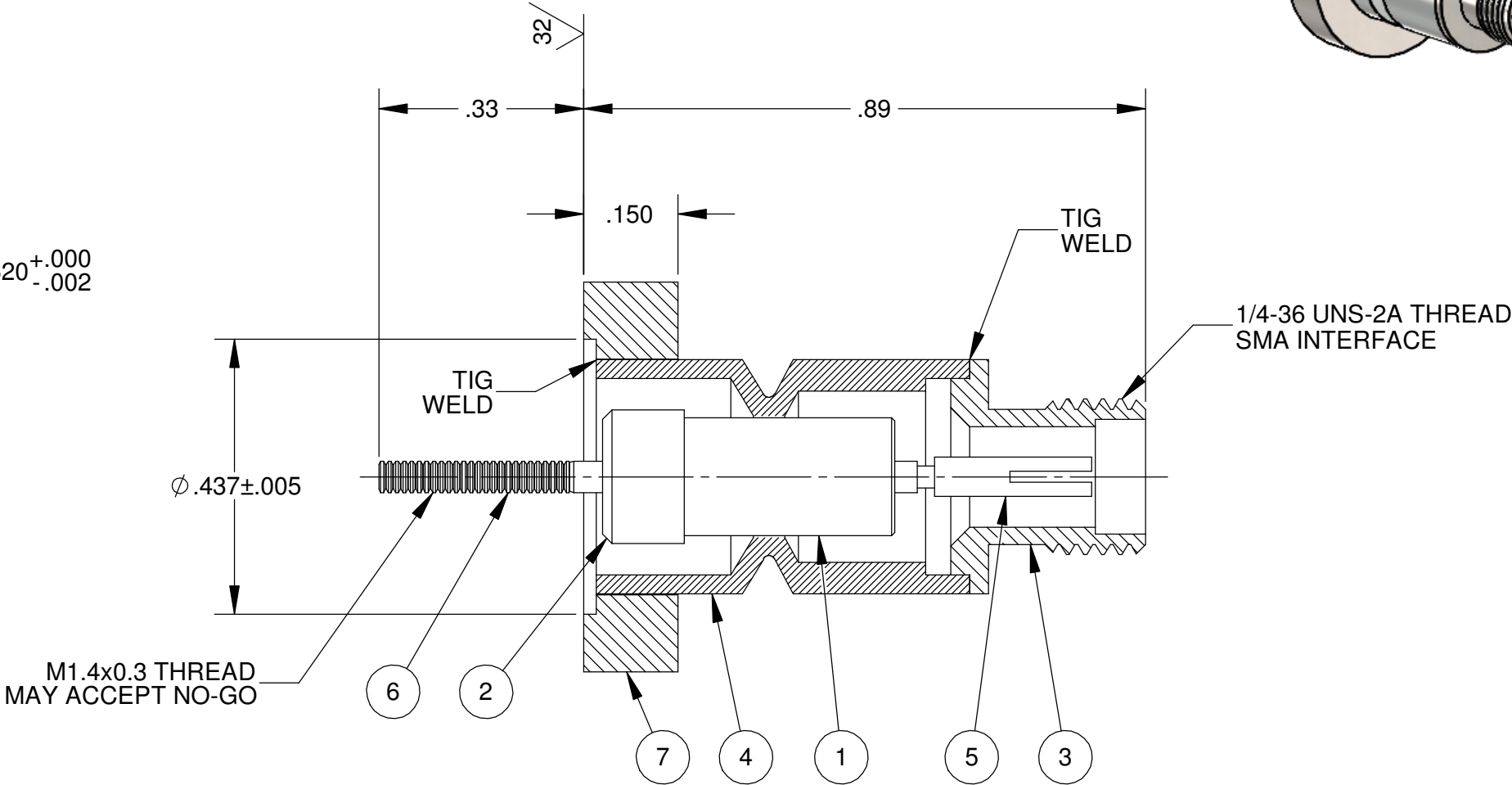
B



A



A



SECTION Z-Z

REFERENCE:
JEFFERSON LAB
DWG #JL0170822 Rev -

PROPRIETARY & CONFIDENTIAL
THIS DRAWING IS THE PROPERTY OF CERAMTEC
THIS MATERIAL SHALL NOT BE REPRODUCED OR
PUBLISHED IN ANY FORM OR DISCLOSED TO
ANYONE OUTSIDE YOUR EMPLOY WITHOUT PRIOR
WRITTEN CONSENT FROM CERAMTEC.

MATERIAL: SEE DESCRIPTION		TITLE: DRF C75 CRYOMODULE PROBE ASSY			
CERAMTEC SPECIFICATIONS APPLY: N/A			SUPERCEDES: N/A		
FINISH: AS ASSEMBLED	DIMENSIONS IN INCHES EXCEPT AS NOTED TOLERANCES UNLESS OTHERWISE SPECIFIED:			DRAWN: OB	SCALE: 4:1
PLATING: NONE				APP'D: OB	DATE: 8/15/2024
SIMILAR TO: 8071/0891	1 PLACE	2 PLACE	3 PLACE	ANGLES	REF: Q46464
USED ON: N/A	±	±.03	±.015	±2°	



CeramTec North America Corporation

DRAWING No.
Q464641 SALES

SHEET 1 OF 1 REV. A

Q464641 SALES