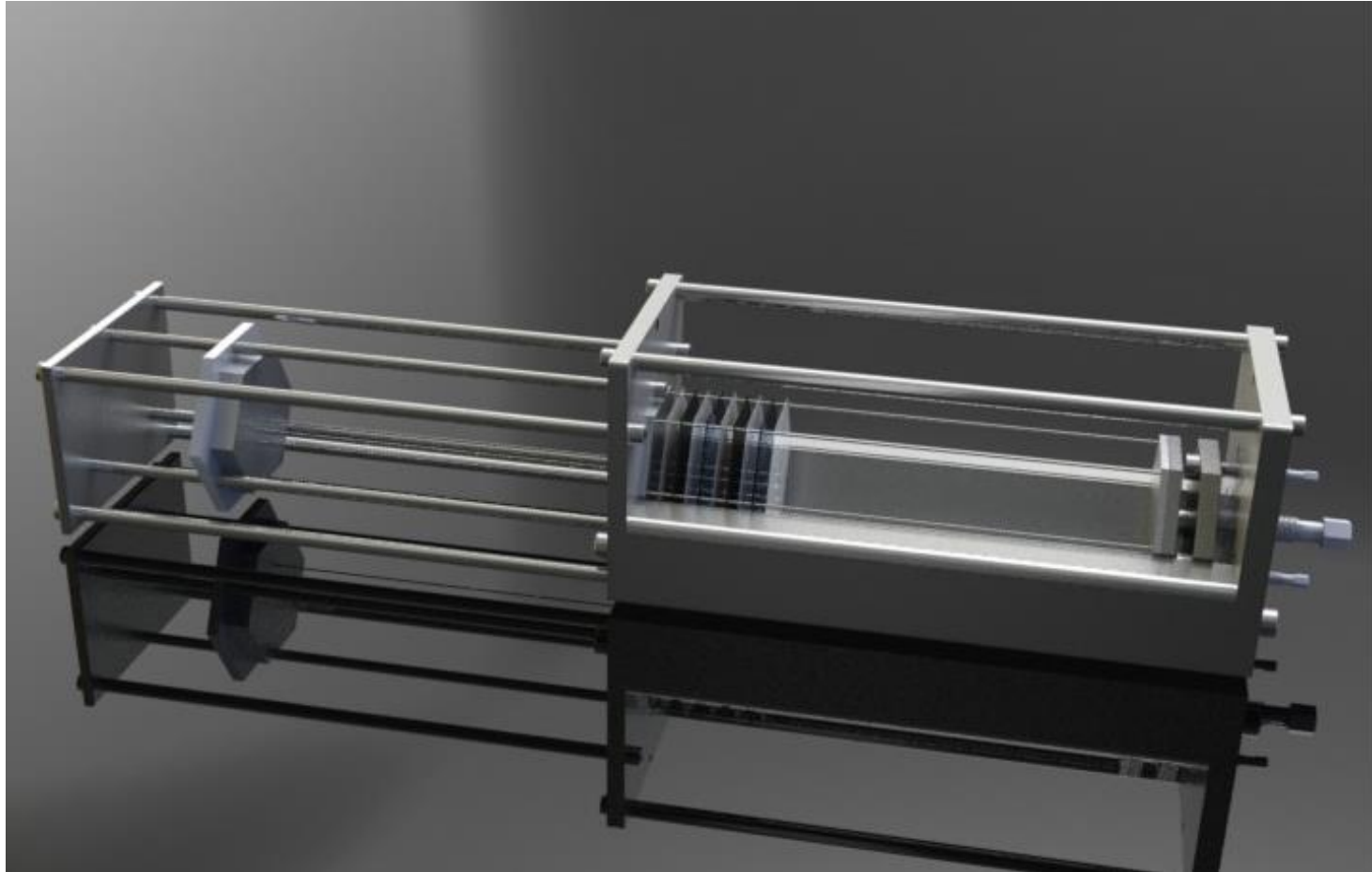


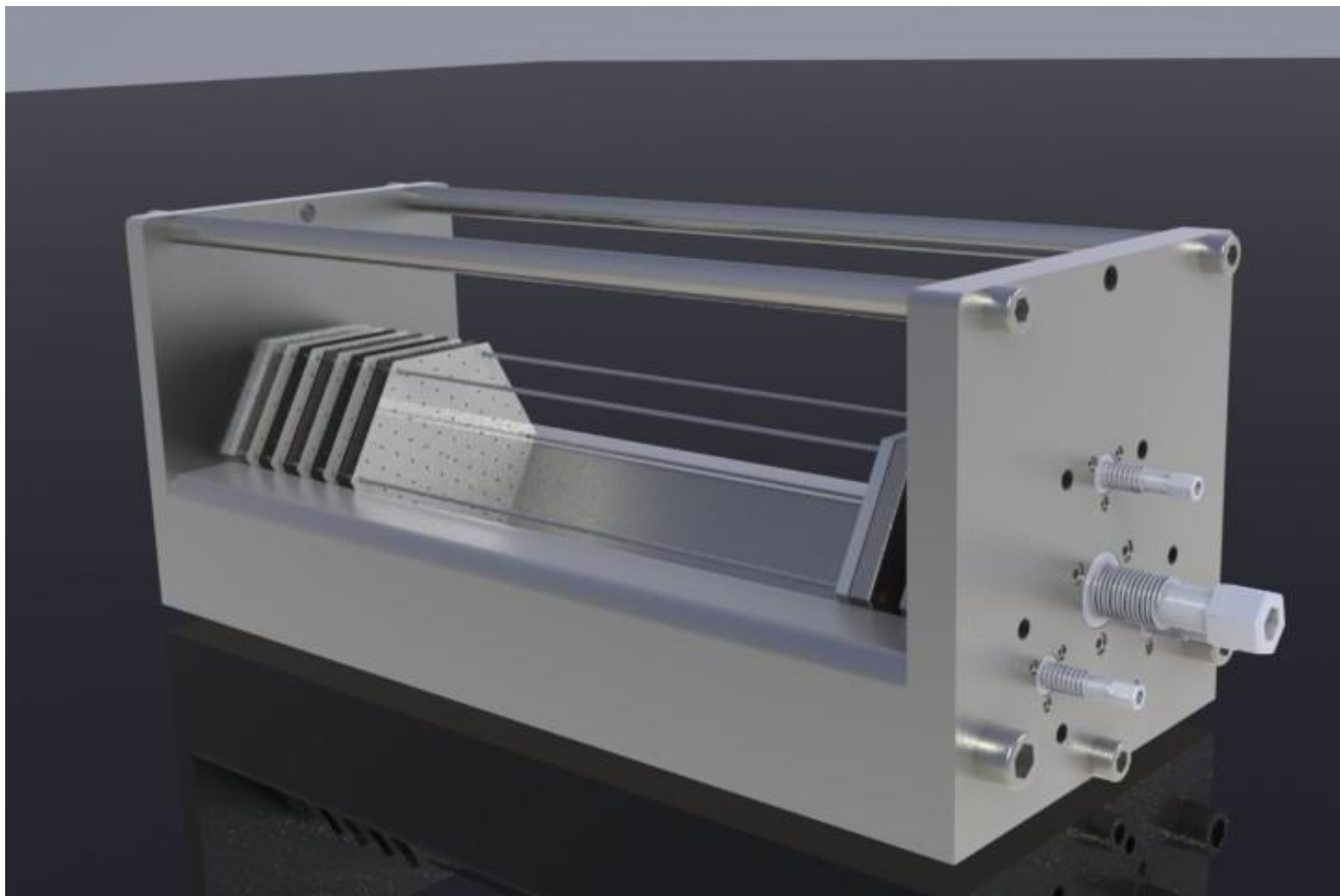
# The Design of Shashlyk Module Assembly Device and Pressure Test

Ye Tian

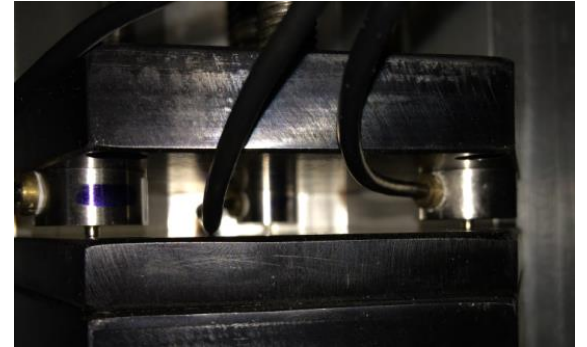
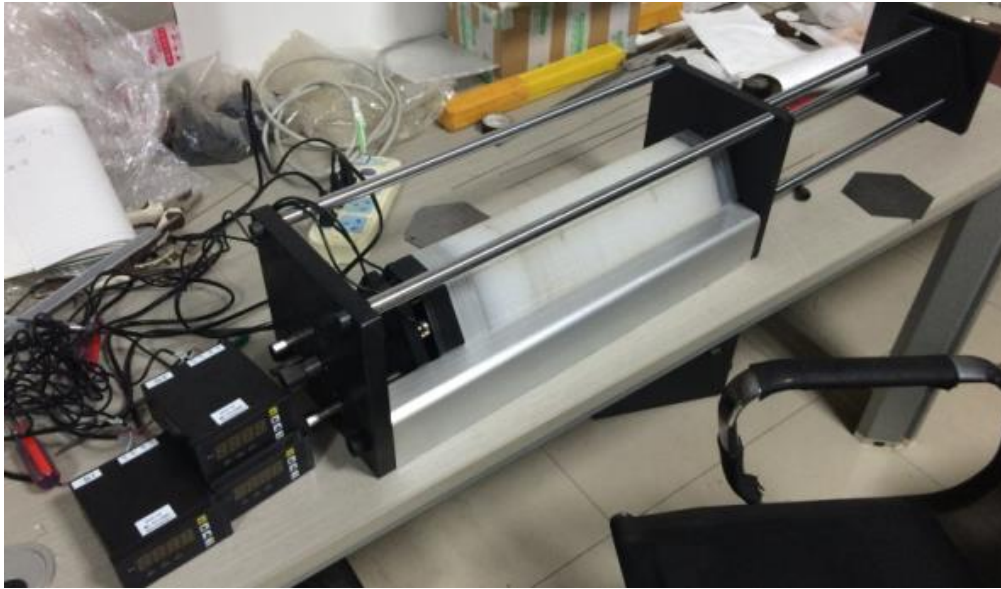
Shandong University

# Assembly Device Design





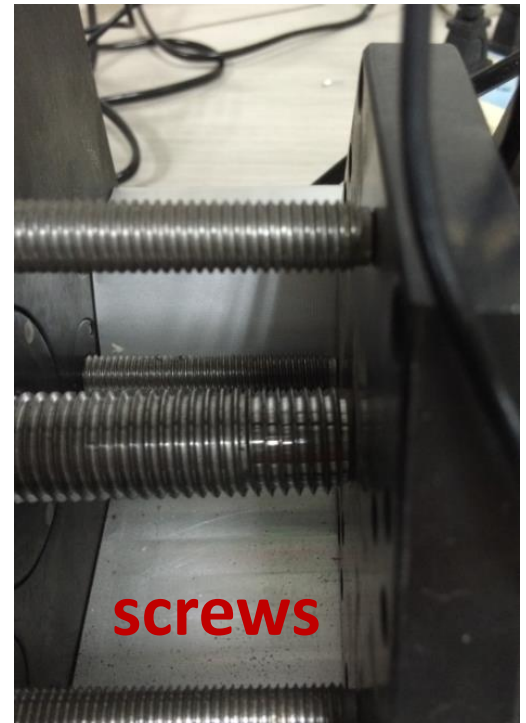
# Real Device Picture



**Sensor(max 500kg)**



**scintillator and lead in test**



**screws**

# Pressure Test and Problems

- Use screws to compress, and keep the display of three pressure sensors similar.
- A little difficult to make sure equal pressure by controlling screws as compression pressure larger.
- The end of Shashlyk near screws will keep away from base when pressure get larger, and we need to supply pressure from above to make the module stable. Need to improve
- Now the max pressure could reach 200kg, and if exceed this, it's really hard to control screws and make module stable.
- The compression length is about 4.2mm(rebound length, 200kg).(just for reference)
- No significant appearance change on scintillator and lead