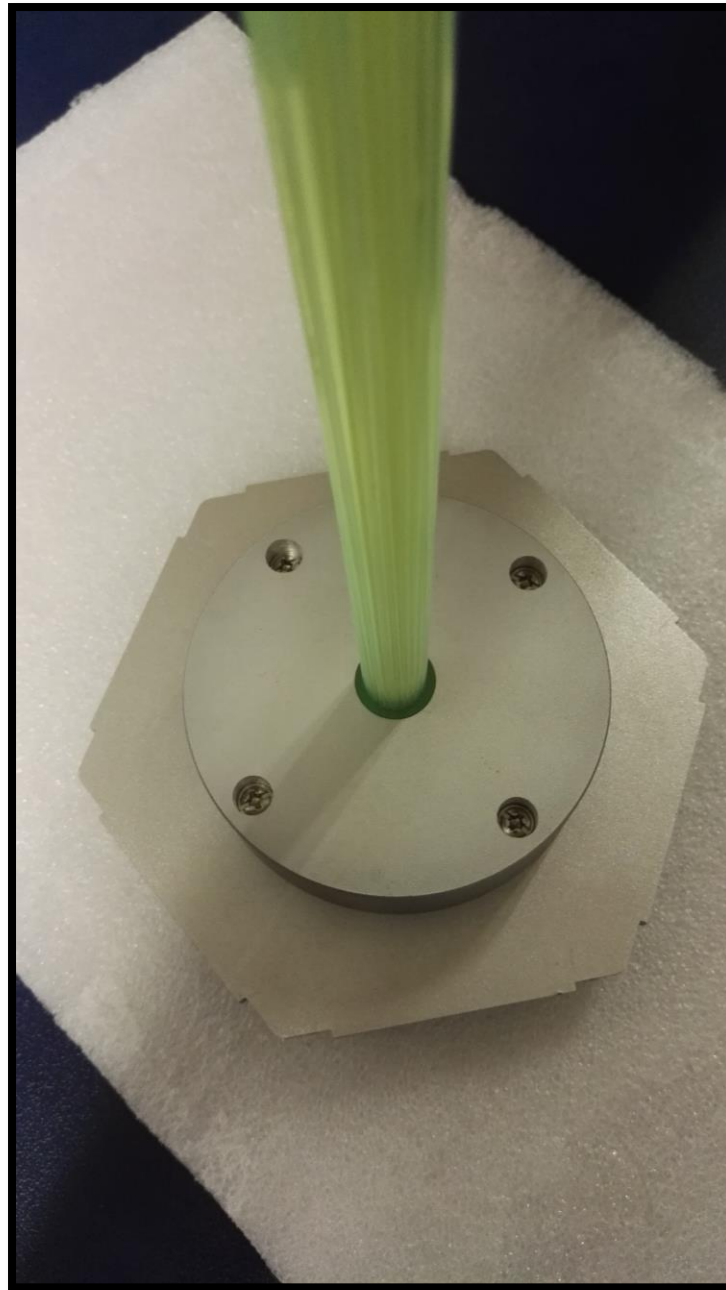


Development of ECAL's prototype

Chendi Shen

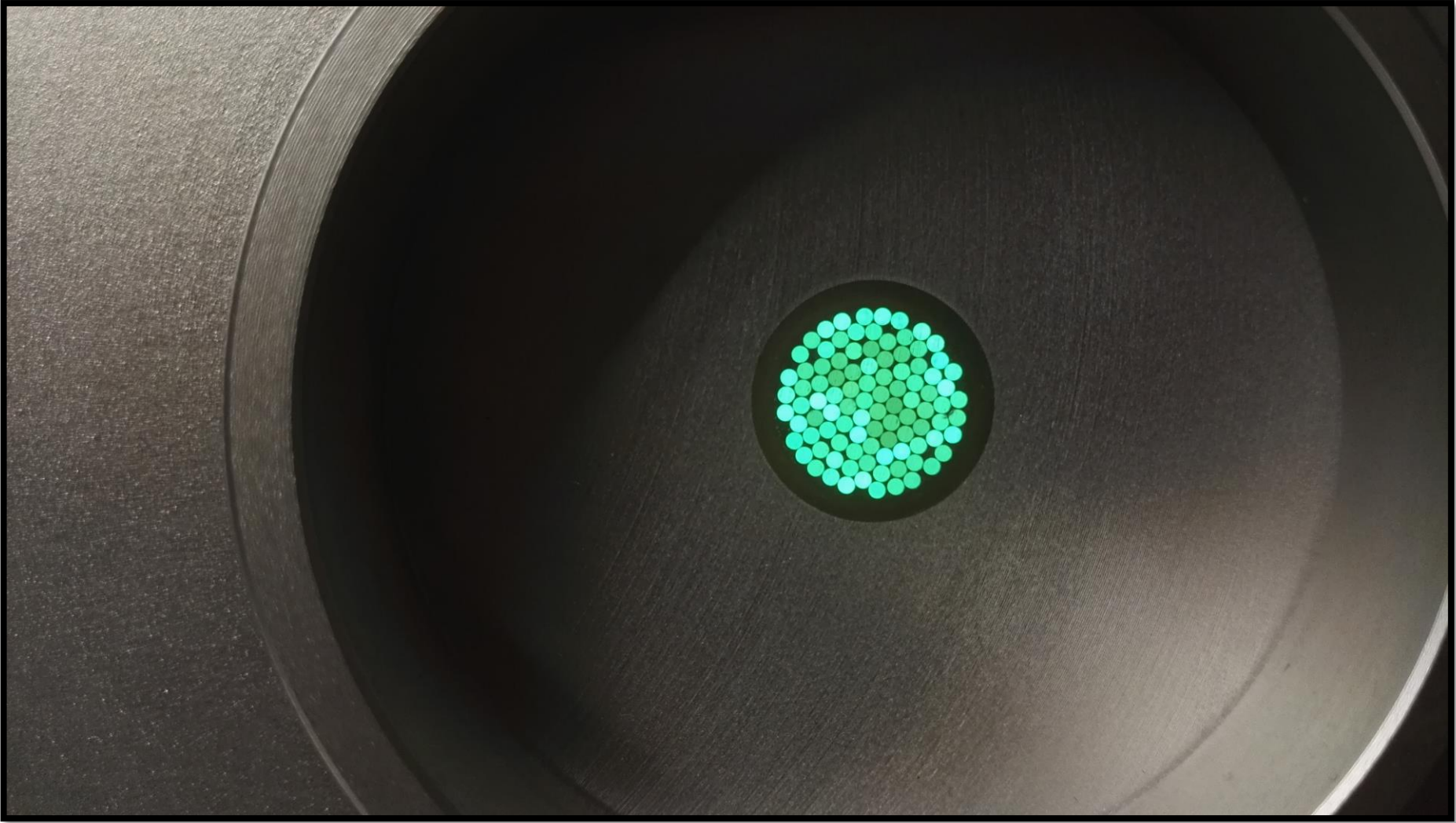
2016.5.12

1. Fiber Cutting

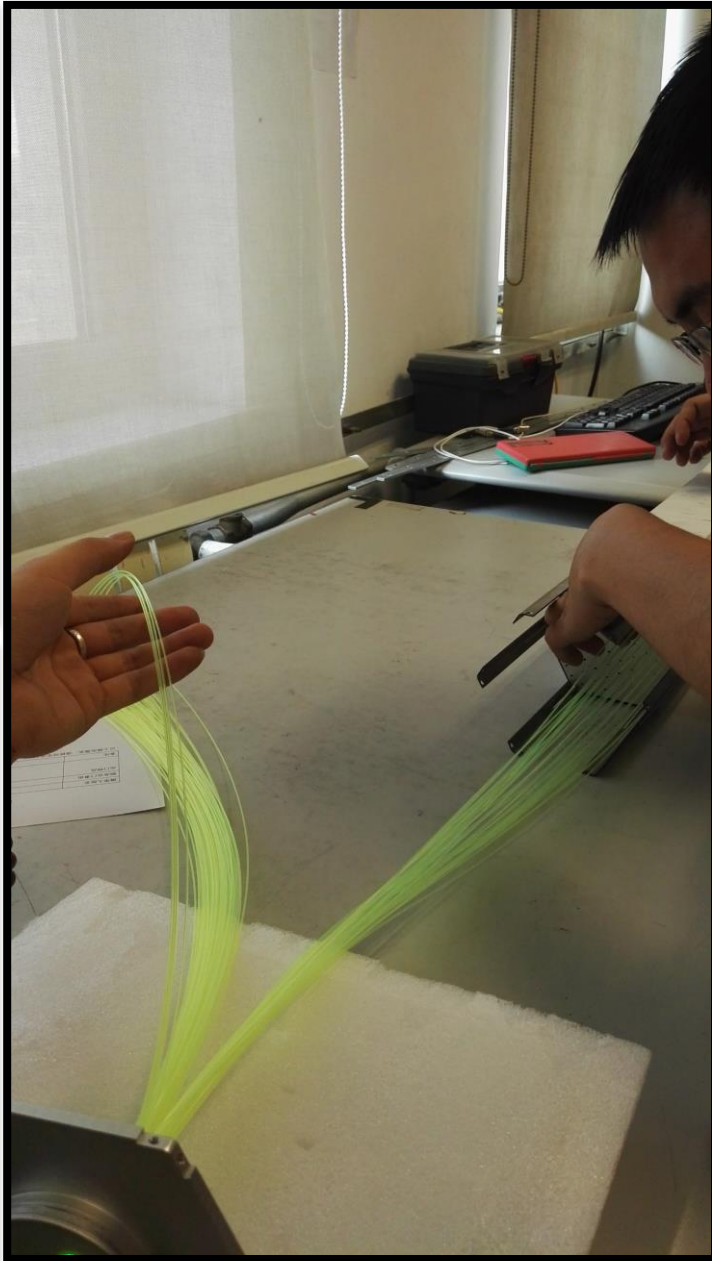
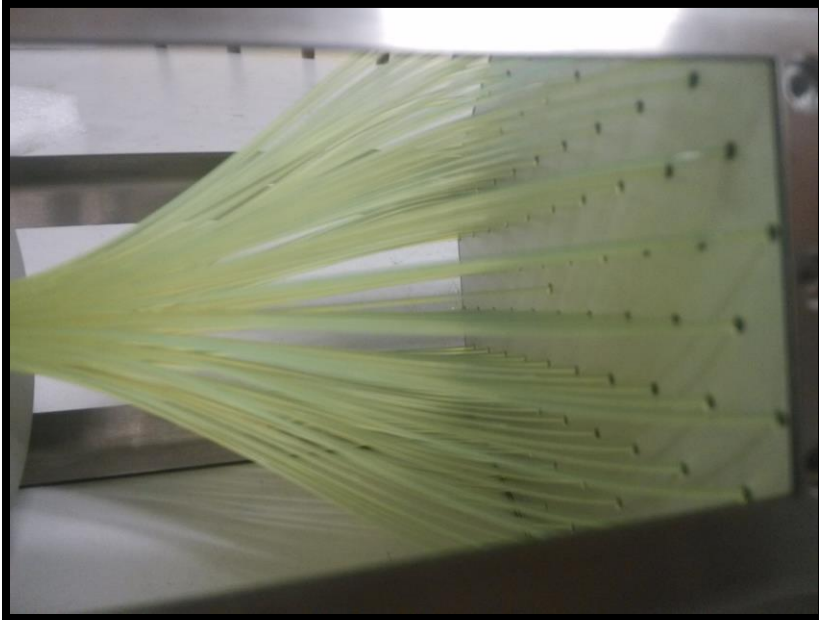
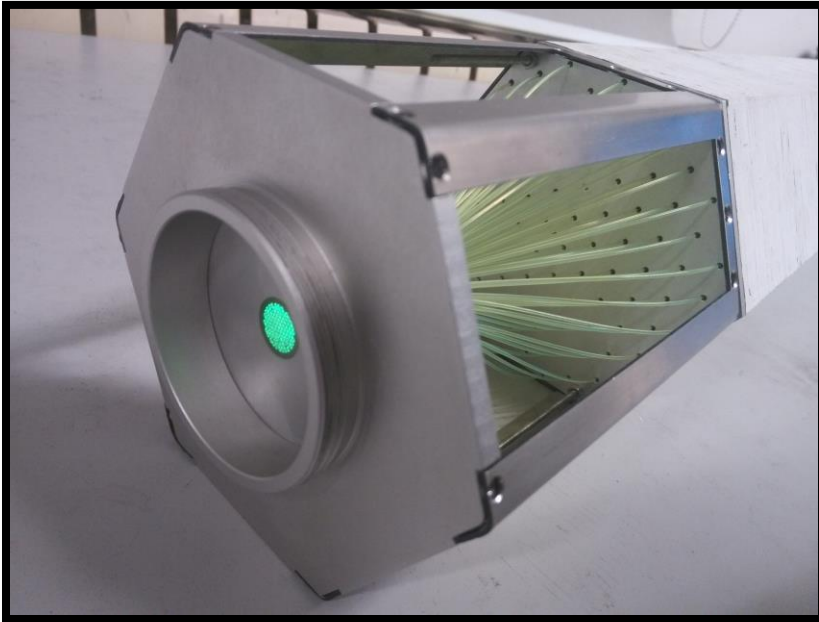


We glued the fiber into the hole with spoxy resin and these fibers had been cut by Kedi.

details

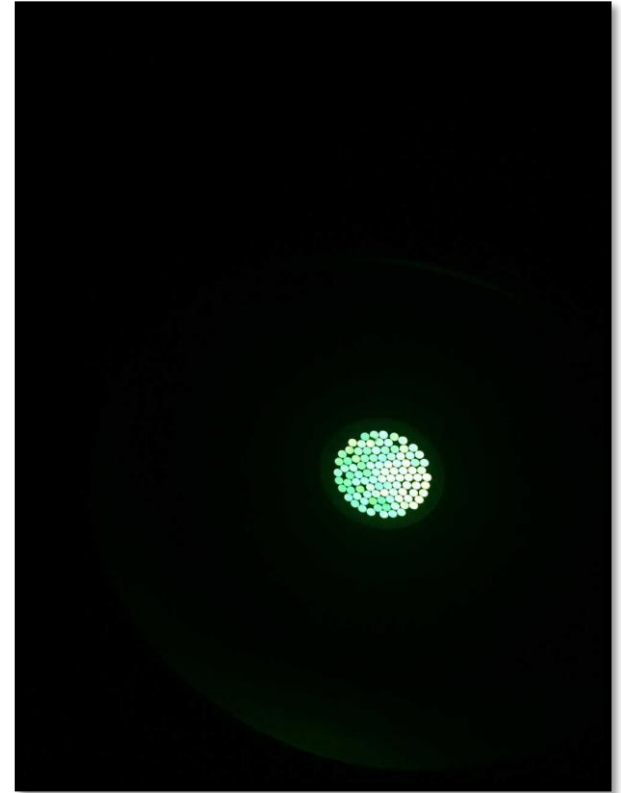


2. Fiber Inserting



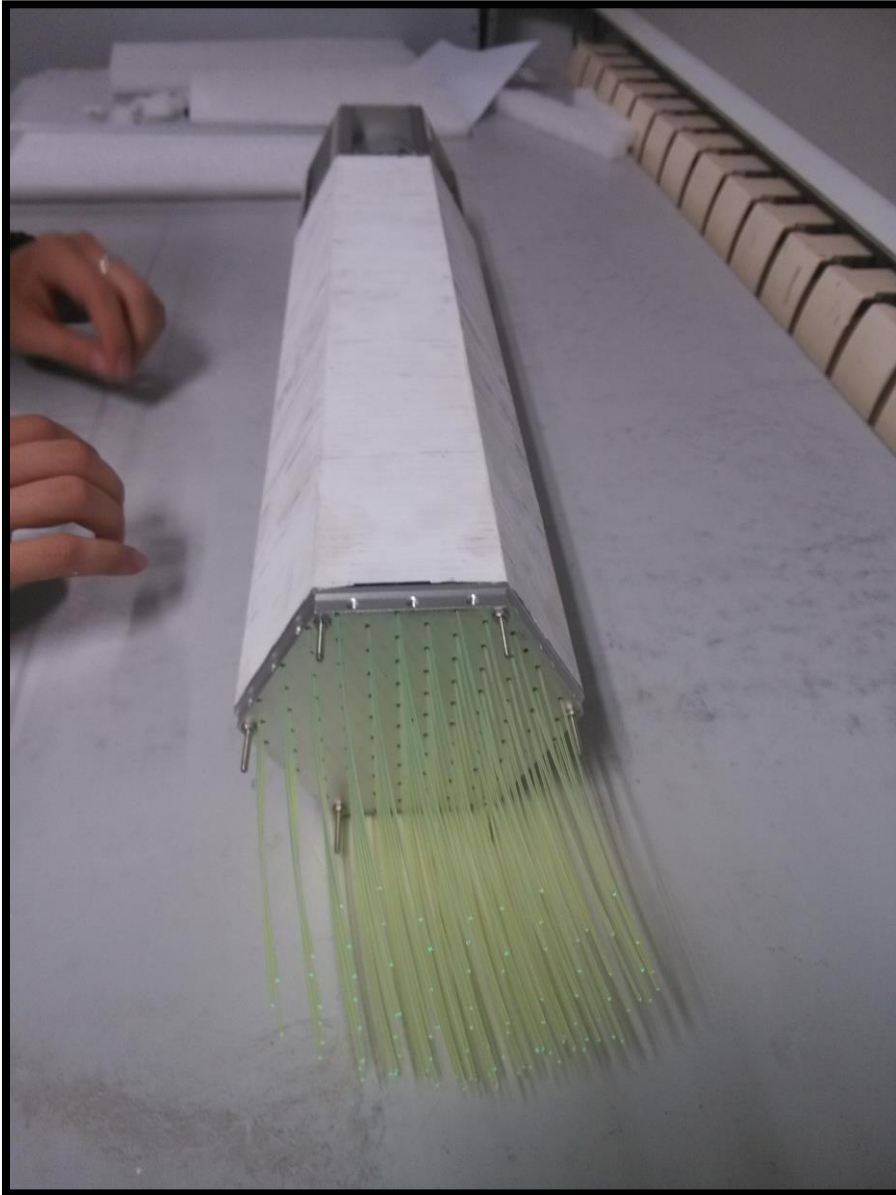
We have finished the work about fiber inserting.

3. Fiber Test



We wrap the bottom of the prototype in black paper and turn off all light. Then we use a glim to shine the bottome of prototype. We can see that every fiber is bright, so we confirm that no fiber is broken when inserting.

4. Next work



- Glue the fiber with dispenser;
- Cut them one by one;
- Polish them with sandpaper;
- Reflective coating.