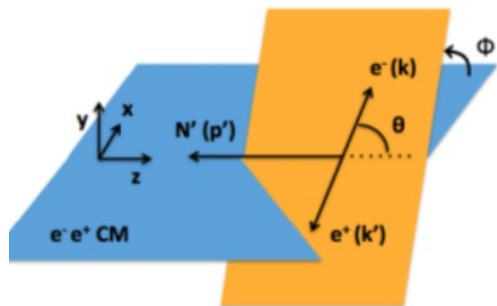
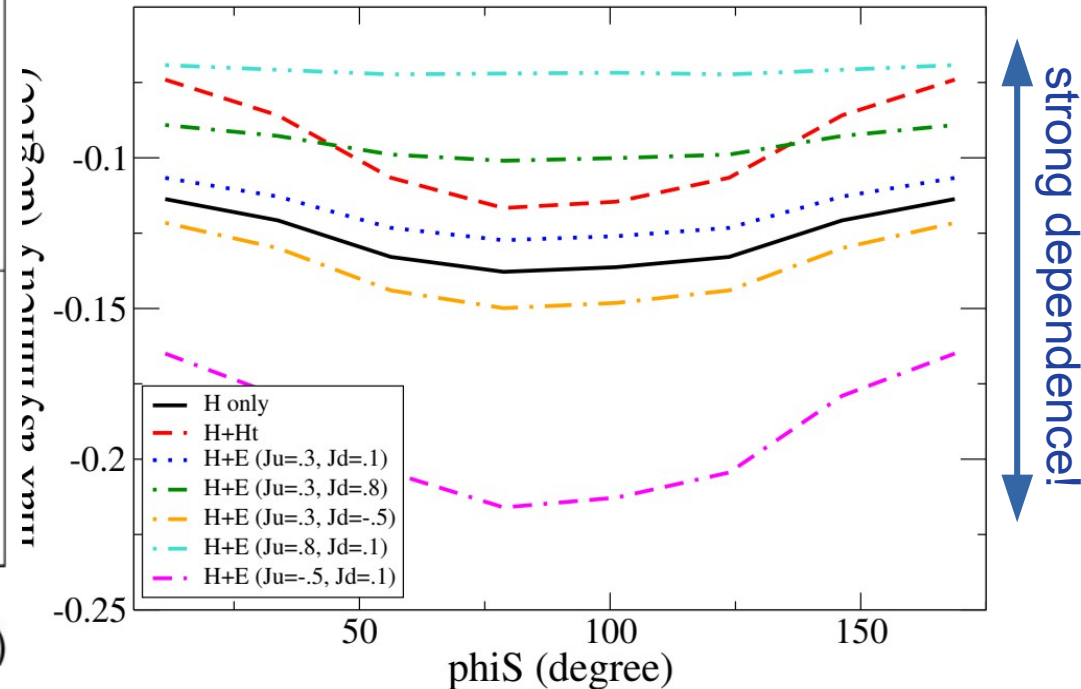
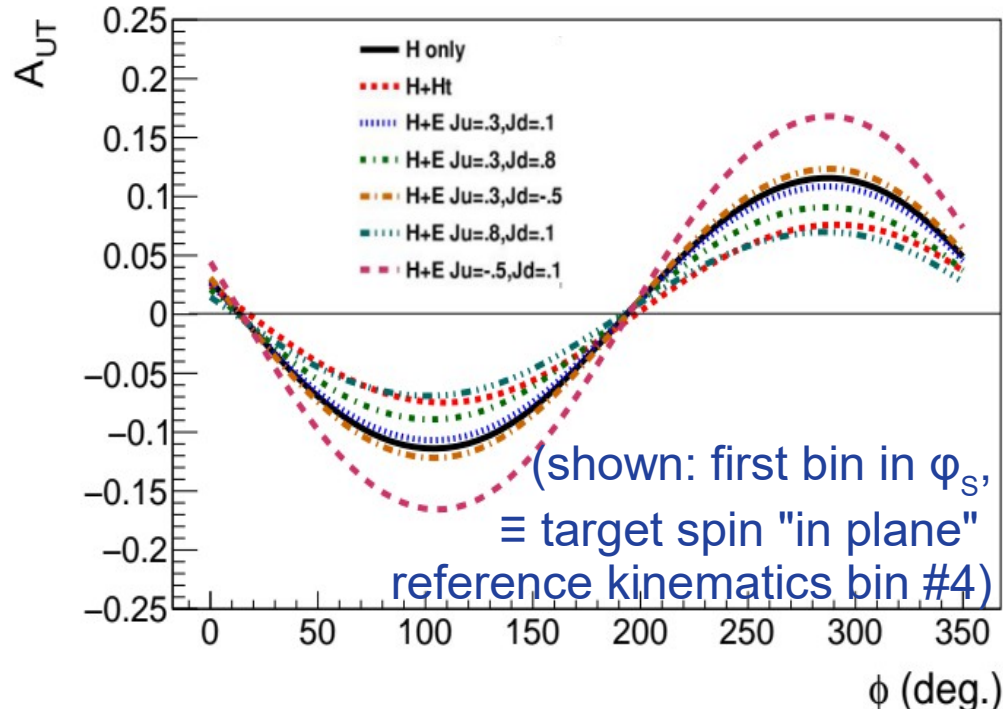


Transverse target spin asymmetries

Dependence in GPD parametrization and J_u, J_d (VGG model) vs ϕ and ϕ_S



ϕ : e^- vs reaction plane
 ϕ_S : P spin vs reaction plane

θ : polar angle (integrated)
 $E_\gamma (\rightarrow \xi), t, Q'^2$

- **TCS contribution through interference**
 \rightarrow purely imaginary, BH cancels
- **Sensitive to GPD parametrization**
- **Angular momenta J_u, J_d and GPD E**

Need of experimental data!